

ATHENS (ALBANY), OHIO

AL-5861 (FAA)

# RNAV (GPS) RWY 7

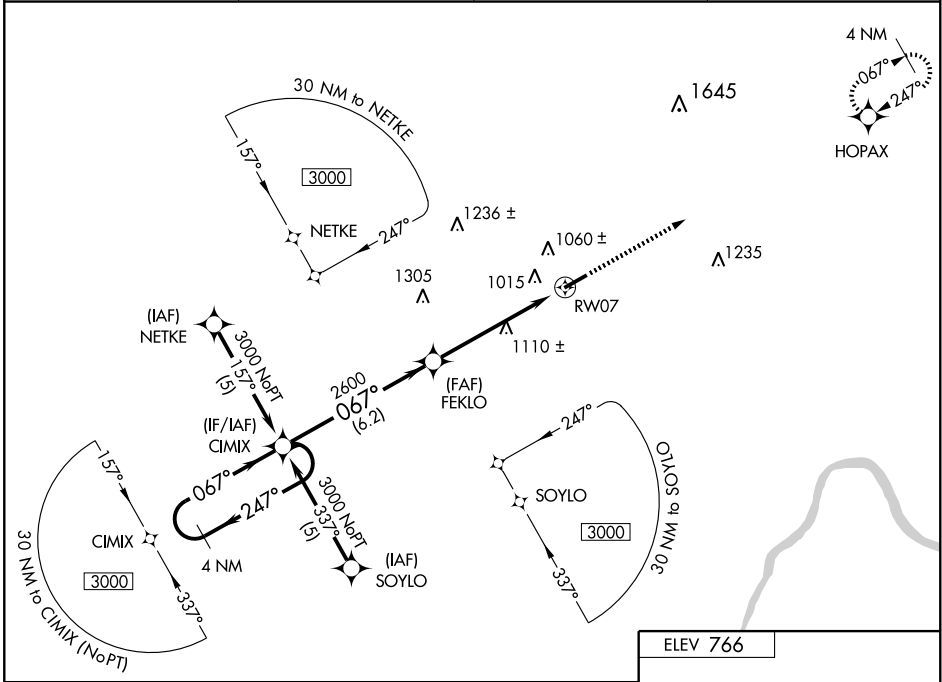
ATHENS (ALBANY)/ OHIO UNIVERSITY SNYDER FIELD (UNI)

APP CRS <b>067°</b>	Rwy Idg <b>4700</b> TDZE <b>765</b> Apt Elev <b>766</b>
------------------------	---

**NA** DME/DME RNP-0.3 NA. Baro-VNAV NA below -16°C (3°F).  
If local altimeter setting not received, use Parkersburg, WV altimeter setting and increase DA and all MDAs 100 feet.  
Baro-VNAV and VDP NA with Parkersburg, WV altimeter setting.

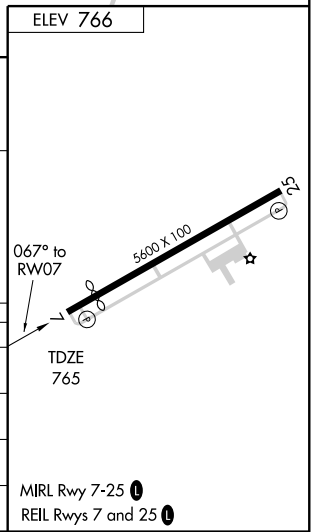
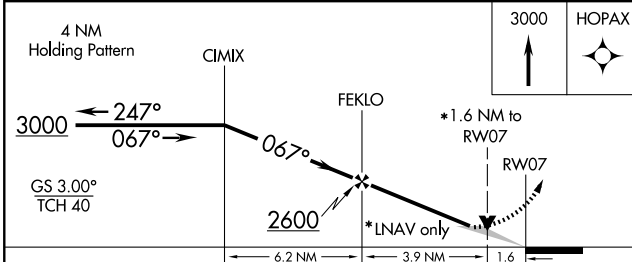
MISSED APPROACH: Climb to 3000 direct HOPAX and hold.

AWOS-3 <b>128.325</b>	HUNTINGTON APP CON <b>120.95 270.1</b>	CLNC DEL <b>120.95</b>	UNICOM <b>123.075 (CTAF) 0</b>
--------------------------	---	---------------------------	-----------------------------------



EC-2, 19 NOV 2009 to 17 DEC 2009

EC-2, 19 NOV 2009 to 17 DEC 2009



CATEGORY	A	B	C	D
LPV DA	NA			
LNAV/VNAV DA	1360-2¼		595 (600-2¼)	
LNAV MDA	1360-1	595 (600-1)	1360-1½ 595 (600-1½)	1360-1¾ 595 (600-1¾)
CIRCLING	1380-2¼ 614 (700-2¼)	1420-2¼		654 (700-2¼)

ATHENS (ALBANY), OHIO  
Orig-A 08325

ATHENS (ALBANY)/ OHIO UNIVERSITY SNYDER FIELD (UNI)  
39°13'N - 82°14'W

# RNAV (GPS) RWY 7