

ATHENS (ALBANY), OHIO

AL-5861 (FAA)

LOC I-UNI	APP CRS	Rwy Idg	5600
108.75	247°	TDZE	765
		Apt Elev	766

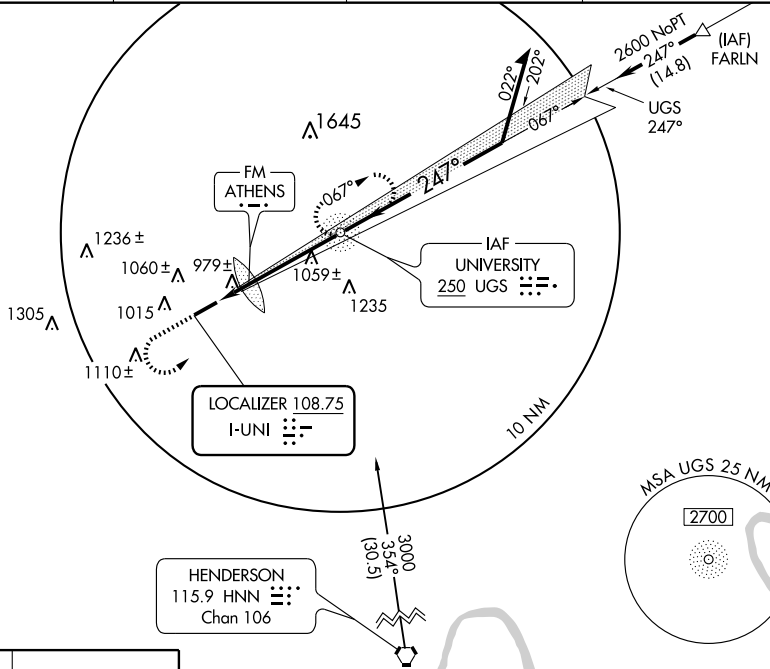
ILS or LOC RWY 25

ATHENS (ALBANY)/ OHIO UNIVERSITY SNYDER FIELD (UNI)

ADF REQUIRED
 If local altimeter setting not received, use Parkersburg, WV altimeter setting and increase all DH's and MDA's 100 feet.

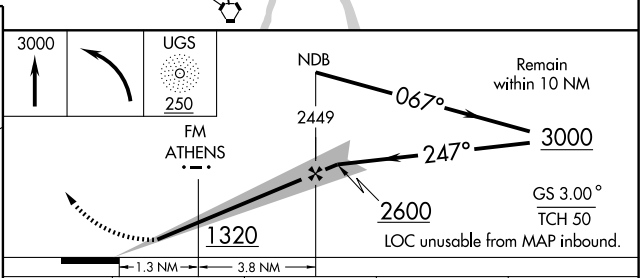
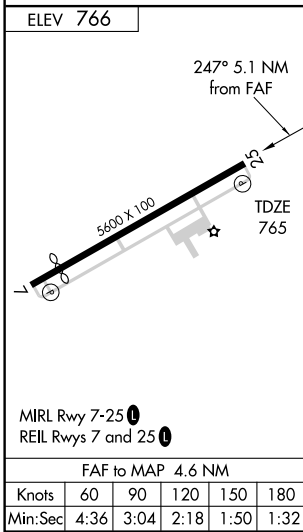
MISSED APPROACH: Climb to 3000, then left turn direct UGS NDB and hold.

AWOS-3 128.325	HUNTINGTON APP CON 120.95 270.1	CLNC DEL 120.95	UNICOM 123.075 (CTAF)
--------------------------	---	---------------------------	---------------------------------



EC-2, 11 MAR 2010 to 08 APR 2010

EC-2, 11 MAR 2010 to 08 APR 2010



CATEGORY	A	B	C	D
S-ILS 25		974-1	209 (300-1)	
S-LOC 25	1320-1	555 (600-1)	1320-1½ 555 (600-1½)	1320-1¾ 555 (600-1¾)
CIRCLING	1380-1 614 (700-1)	1420-1 654 (700-1)	1420-1¾ 654 (700-1¾)	1420-2 654 (700-2)
FM MINIMUMS				
S-LOC 25	1240-1	475 (500-1)	1240-1¼ 475 (500-1¼)	1240-1½ 475 (500-1½)
CIRCLING	1380-1 614 (700-1)	1420-1 654 (700-1)	1420-1¾ 654 (700-1¾)	1420-2 654 (700-2)

ATHENS (ALBANY), OHIO
 Amdt 1B 10042

ATHENS (ALBANY)/OHIO UNIVERSITY SNYDER FIELD (UNI)
 39°13'N - 82°14'W
ILS or LOC RWY 25