

ATHENS (ALBANY), OHIO

AL-5861 (FAA)

# NDB RWY 25

ATHENS (ALBANY)/OHIO UNIVERSITY SNYDER FIELD (UNI)

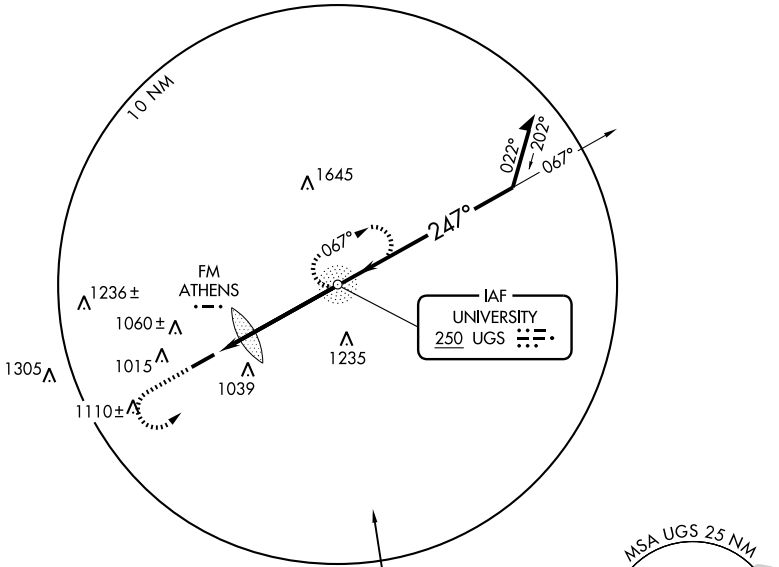
NDB	UGS	APP CRS	Rwy Idg	5600
	<b>250</b>	<b>247°</b>	TDZE	765
			Apt Elev	766



If local altimeter setting not received, use Parkersburg, WV altimeter setting and increase all MDAs 100 feet.

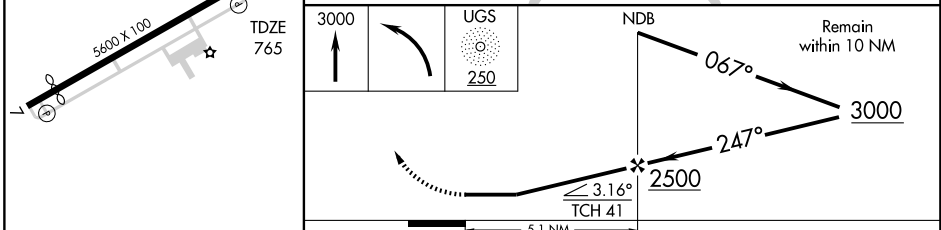
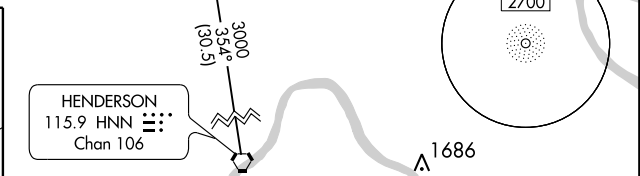
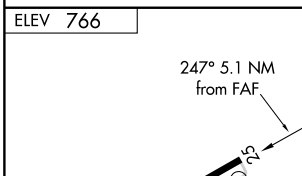
MISSED APPROACH: Climb to 3000, then left turn direct UGS NDB and hold.

AWOS-3 <b>128.325</b>	HUNTINGTON APP CON <b>120.95 270.1</b>	CLNC DEL <b>120.95</b>	UNICOM <b>123.075 (CTAF) 0</b>
--------------------------	---	---------------------------	-----------------------------------



EC-2, 11 MAR 2010 to 08 APR 2010

EC-2, 11 MAR 2010 to 08 APR 2010



MIRL Rwy 7-25 0  
REIL Rws 7 and 25 0

FAF to MAP 5.1 NM					
Knots	60	90	120	150	180
Min:Sec	5:06	3:24	2:33	2:02	1:42

CATEGORY	A	B	C	D
S-25	1380-1	615 (700-1)	1380-1¾ 615 (700-1¾)	1380-2 615 (700-2)
CIRCLING	1380-1 614 (700-1)	1420-1 654 (700-1)	1420-1¾ 654 (700-1¾)	1420-2 654 (700-2)

ATHENS (ALBANY), OHIO  
Amdt 9A 10042

ATHENS (ALBANY)/ OHIO UNIVERSITY SNYDER FIELD (UNI)  
39°13'N - 82°14'W

# NDB RWY 25