

DENTON, TEXAS

AL-5866 (FAA)

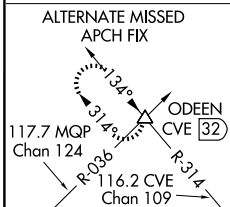
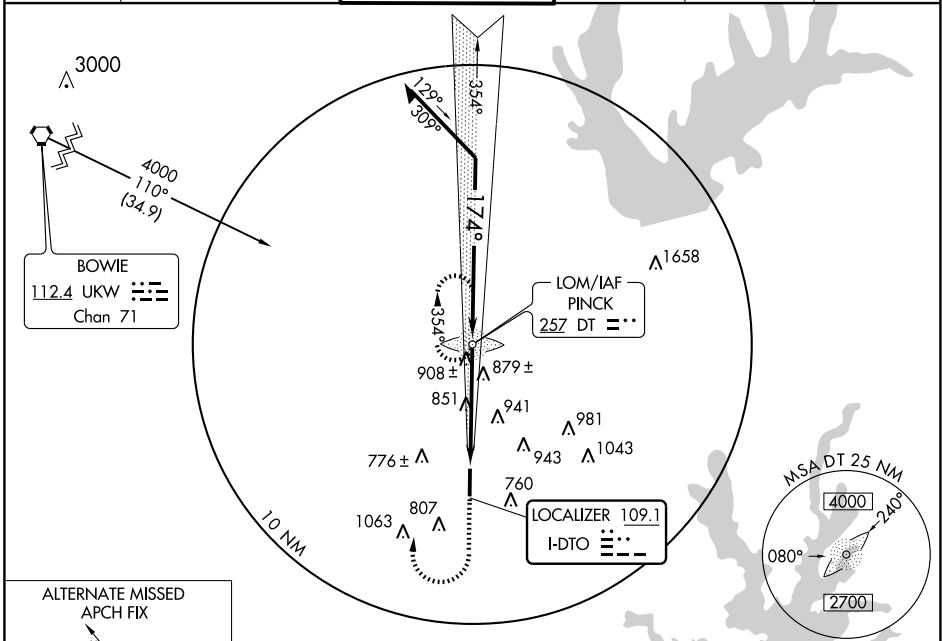
LOC I-DTO 109.1	APP CRS 174°	Rwy Idg TDZE Apt Elev	5999 642 642
---------------------------	------------------------	-----------------------------	---

ILS or LOC RWY 17

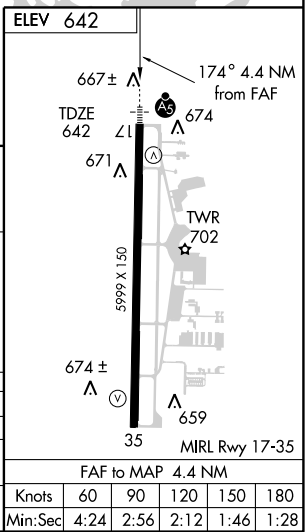
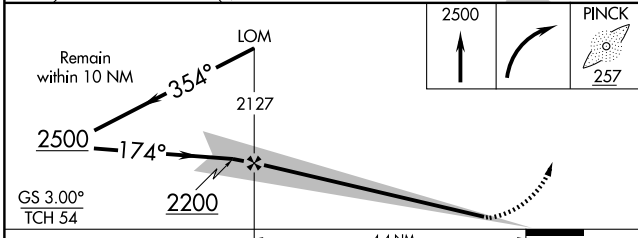
DENTON MUNI (D'TO)

▲ NA ADF REQUIRED		MALS R 	MISSED APPROACH: Climb to 2500, then right turn direct PINCK LOM and hold.		
--------------------------	--	------------	--	--	--

ASOS 119.325	REGIONAL APP CON 118.1 306.95	DENTON TOWER★ 119.95 (CTAF)	GND CON 123.95	CLNC DEL 123.95	UNICOM 122.95
------------------------	---	---------------------------------------	--------------------------	---------------------------	-------------------------



ADF REQUIRED



CATEGORY	A	B	C	D
S-ILS 17		842- ½	200 (200- ½)	
S-LOC 17	1120- ½	478 (500- ½)	1120- ¾ 478 (500- ¾)	1120-1 478 (500-1)
CIRCLING	1120-1	478 (500-1)	1120-1 ½ 478 (500-1 ½)	1260-2 618 (700-2)

DENTON, TEXAS
Amdt 8 08101

33°12'N-97°12'W

DENTON MUNI (D'TO)

ILS or LOC RWY 17

FAF to MAP 4.4 NM					
Knots	60	90	120	150	180
Min:Sec	4:24	2:56	2:12	1:46	1:28

SC-2, 19 NOV 2009 to 17 DEC 2009

SC-2, 19 NOV 2009 to 17 DEC 2009