

PLATTEVILLE, WISCONSIN

AL-5875 (FAA)

RNAV (GPS) RWY 15

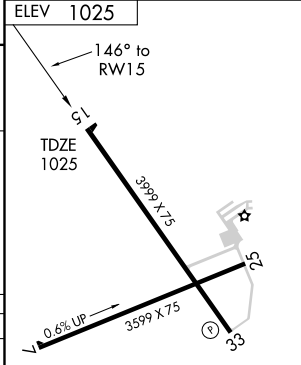
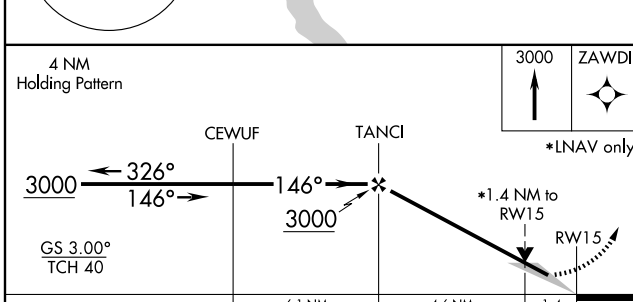
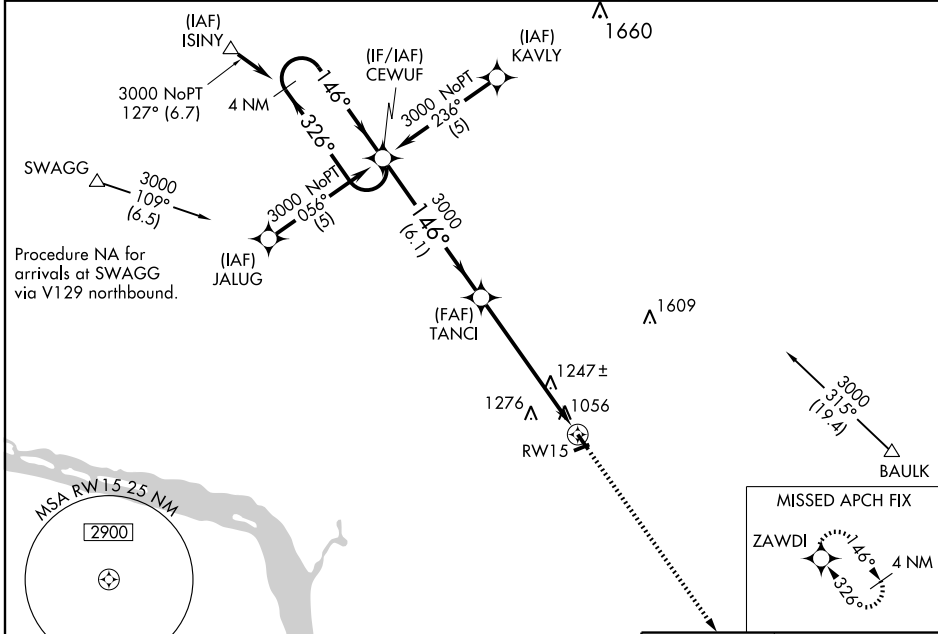
PLATTEVILLE MUNI (PVB)

WAAS CH 42615 W15A	APP CRS 146°	Rwy Idg TDZE Apt Elev	3999 1025 1025
--	------------------------	-----------------------------	---

For uncompensated Baro-VNAV systems, LNAV/VNAV NA below -17°C (2°F) or above 54°C (130°F). DME/DME RNP-0.3 NA. When local altimeter setting not received, use Dubuque altimeter setting and increase all DA 56 feet, all MDA 60 feet, increase LNAV/VNAV all Cats and LNAV Cat C visibility 1/4 mile. Baro-VNAV and VDP NA when using Dubuque altimeter setting.

MISSED APPROACH:
Climb to 3000 direct ZAWDI and hold.

AWOS-3 120.575	CHICAGO CENTER 133.95 281.4	UNICOM 122.7 (CTAF) 0
--------------------------	---------------------------------------	---------------------------------



CATEGORY	A	B	C	D
LPV DA	1275-1	250 (300-1)		NA
LNAV/VNAV DA	1338-1	313 (400-1)		NA
LNAV MDA	1500-1	475 (500-1)	1500-1 1/4 475 (500-1 1/4)	NA
CIRCLING	1500-1	475 (500-1)	1500-1 1/2 475 (500-1 1/2)	NA

REIL Rwy 15 and 33 0
MIRL Rwy 7-25 and 15-33 0

EC-3, 11 MAR 2010 to 08 APR 2010

EC-3, 11 MAR 2010 to 08 APR 2010

PLATTEVILLE, WISCONSIN
Orig 09295

42°41'N - 90°27'W

PLATTEVILLE MUNI (PVB) RNAV (GPS) RWY 15