

DAYTON, OHIO

AL-5879 (FAA)

VOR-A
DAYTON / GREENE COUNTY-LEWIS A. JACKSON RGNL (I19)

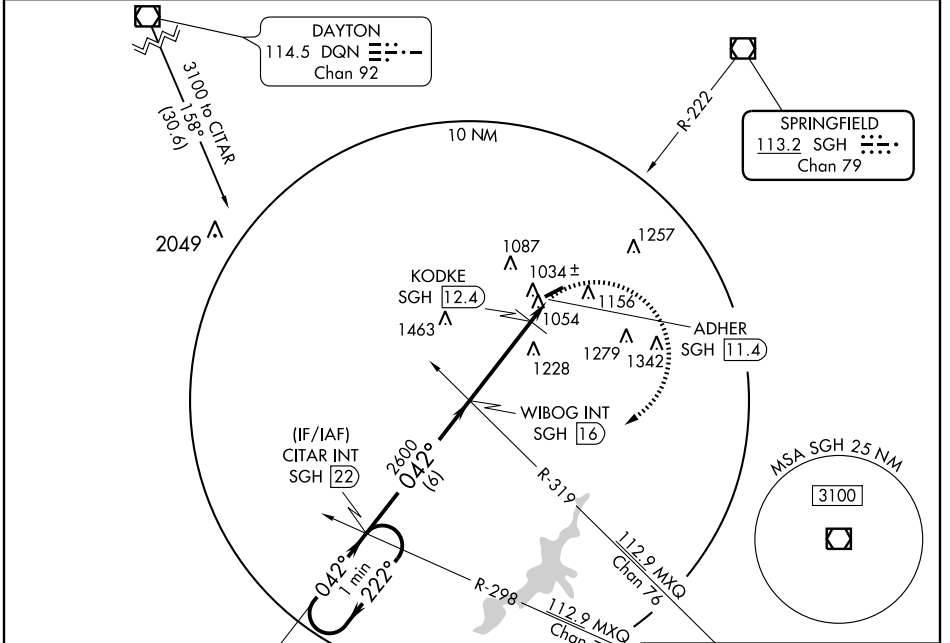
VOR/DME SGH 113.2 Chan 79	APP CRS 042°	Rwy Idg TDZE Apt Elev	N/A N/A 949
---	------------------------	-----------------------------	--

DAYTON / GREENE COUNTY-LEWIS A. JACKSON RGNL (I19)

NA When local altimeter setting not received, use Dayton-Wright Brothers altimeter setting and increase all MDA 40 feet and Cat C visibility 1/4 mile.

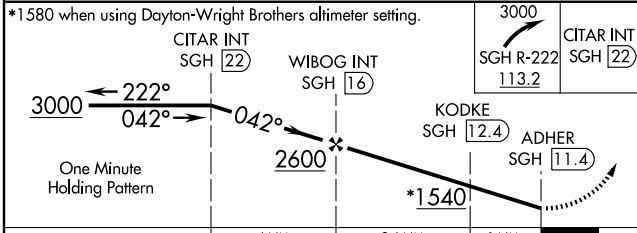
MISSED APPROACH: Climbing right turn to 3000 via SGH VOR/DME R-222 to CITAR Int/SGH 22 DME and hold.

AWOS-3 118.525	DAYTON APP CON 118.85 327.1	GCO 121.725	UNICOM 122.7 (CTAF) 0
--------------------------	---------------------------------------	-----------------------	--



EC-2, 11 MAR 2010 to 08 APR 2010

EC-2, 11 MAR 2010 to 08 APR 2010



CATEGORY	A	B	C	D
CIRCLING	1540-1	591 (600-1)	1540-1½ 591 (600-1½)	NA
KODKE FIX MINIMUMS				
CIRCLING	1460-1	511 (600-1)	1460-1½ 511 (600-1½)	NA

LIRL Rwy 7-25 0					
REIL Rwys 7 and 25 0					
FAF to MAP 4.6 NM					
Knots	60	90	120	150	180
Min:Sec	4:36	3:04	2:18	1:50	1:32

DAYTON, OHIO
Orig 09155

DAYTON / GREENE COUNTY-LEWIS A. JACKSON RGNL (I19)
39°42'N - 83°59'W

VOR-A