

DAYTON, OHIO

AL-5879 (FAA)

# RNAV (GPS) RWY 25

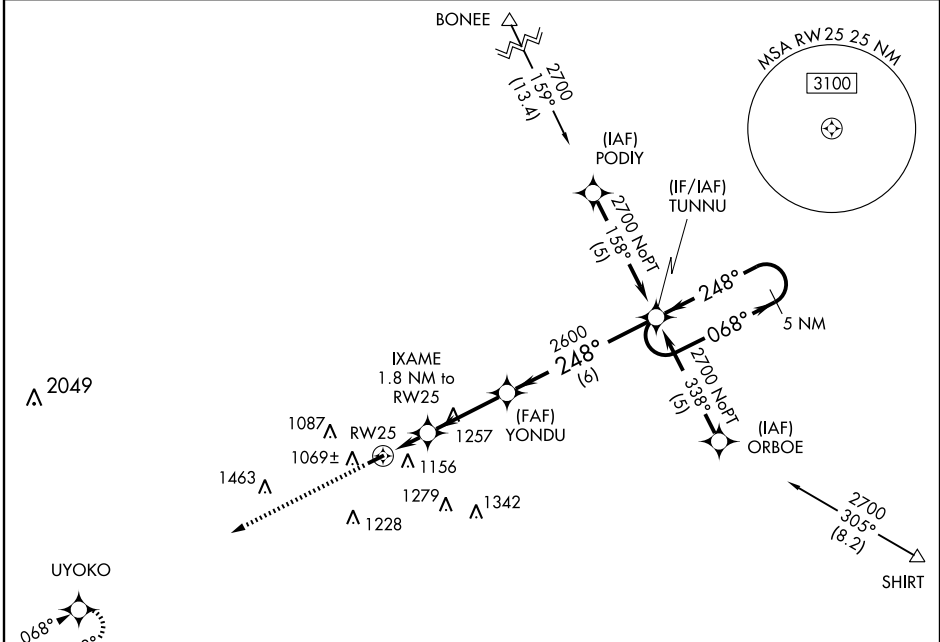
DAYTON / GREENE COUNTY-LEWIS A. JACKSON RGNL (I19)

WAAS CH <b>56602</b> W25A	APP CRS <b>248°</b>	Rwy Idg <b>4500</b> TDZE <b>946</b> Apt Elev <b>946</b>
---------------------------------	------------------------	---

**▼** DME/DME RNP-0.3 NA. If local altimeter setting not received, use Dayton-Wright Brothers altimeter setting and increase all DAs/MDAs 40 feet. VDP NA when using Dayton-Wright Brothers altimeter setting.

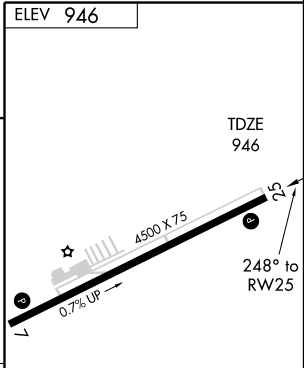
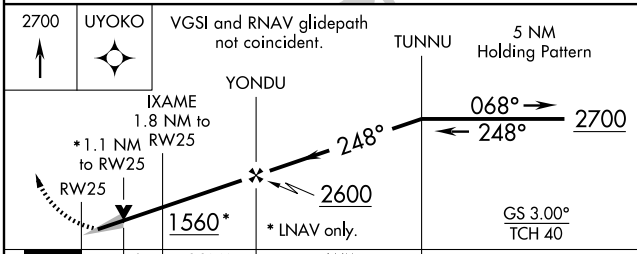
**▲** NA MISSED APPROACH: Climb to 2700 direct UYOKO and hold.

AWOS-3 <b>118.525</b>	DAYTON APP CON <b>118.85 327.1</b>	GCO <b>121.725</b>	UNICOM <b>122.7 (CTAF) 0</b>
--------------------------	---------------------------------------	-----------------------	---------------------------------



EC-2, 11 MAR 2010 to 08 APR 2010

EC-2, 11 MAR 2010 to 08 APR 2010



CATEGORY	A	B	C	D
LPV DA	1196-1 250 (300-1)			NA
LNAV MDA	1440-1	494 (500-1)	1440-1 1/4 494 (500-1 1/4)	NA
CIRCLING	1460-1	514 (600-1)	1460-1 1/2 514 (600-1 1/2)	NA

LIRL Rwy 7-25 0  
REIL Rwy 7 and 25 0

DAYTON, OHIO  
Orig-A 07354

DAYTON / GREENE COUNTY-LEWIS A. JACKSON RGNL (I19)  
39°42'N - 83°59'W

# RNAV (GPS) RWY 25