

# LINDZ FIVE DEPARTURE

SW-1, 11 MAR 2010 to 08 APR 2010

### TAKE-OFF MINIMUMS

RWY 33: 400-1 with minimum climb of 460' per NM to 14000.  
RWY 15: NA - terrain.

ATIS 120.4  
CLNC DEL 123.75  
GND CON  
121.9  
ASPEN TOWER \*  
118.85 (CTAF) 288.3  
ASPEN DEP CON \*  
123.8 288.3  
DENVER CENTER  
125.35 327.8  
UNICOM 122.95

MEEKER
115.2 EKR
Chan 99
N40°04.05' - W107°55.49'
L-9, H-3

RIFLE
110.6 RIL
Chan 43
N39°31.69' - W107°42.98'
L-9, H-3

GRAND JUNCTION
112.4 JNC
Chan 71
N39°03.57' - W108°47.55'
L-9, H-3

SNOW
109.2 SNW
Chan 29
N39°37.77' - W106°59.47'

RED TABLE
113.0 DBL
Chan 77
N39°26.36' - W106°53.68'
L-9, H-3

KREMLING
113.8 RLG
Chan 85
N40°00.16' - W106°26.55'
L-9-11, H-3-5

JESIE
N40°01.41' - W106°52.53'
14500
080°
R-260
(20)

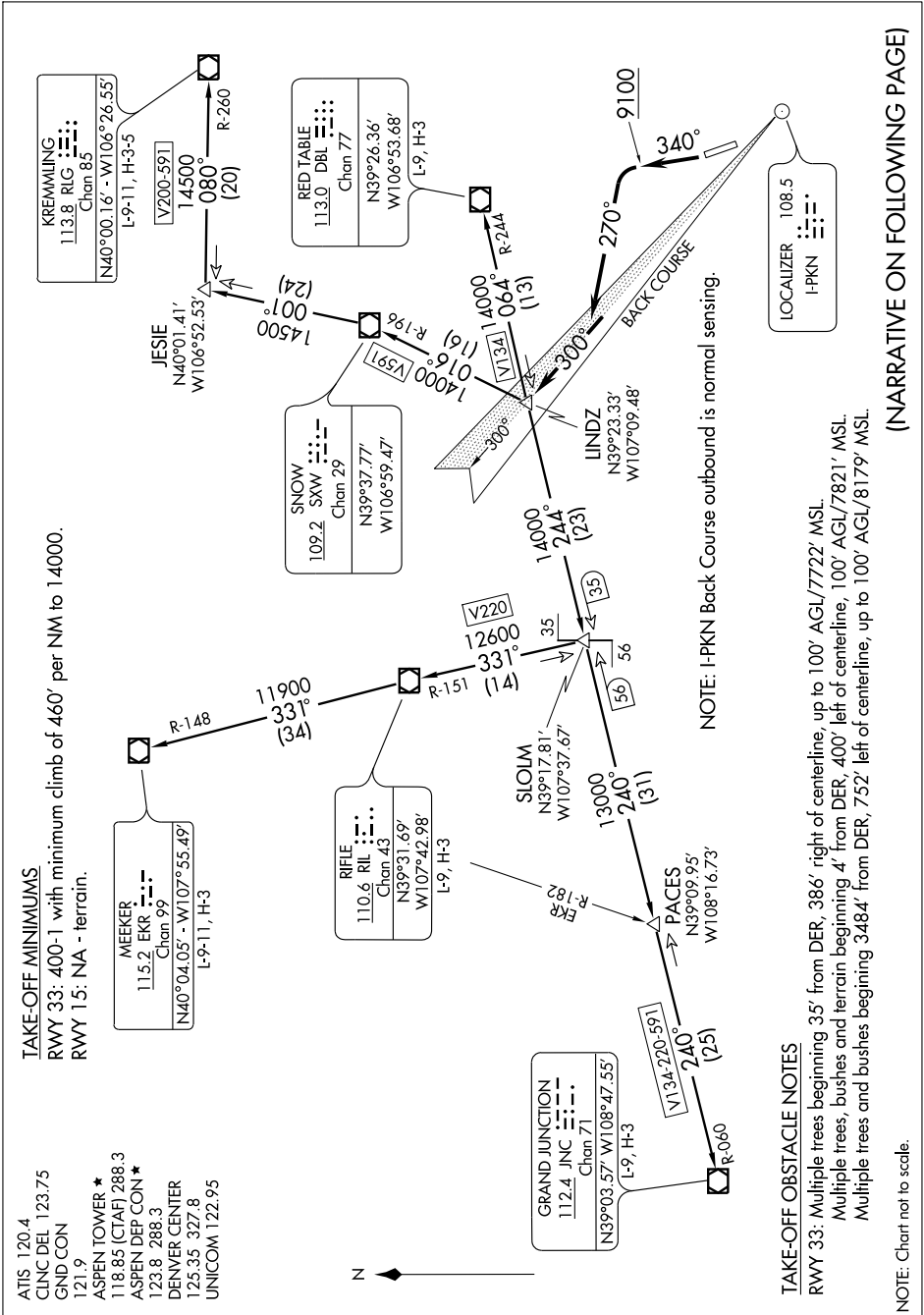
V200-591
14000
016°
R-196
(16)

V220
12600
331°
(14)

SLOIM
N39°17.81' - W107°37.67'
13000
240°
(31)

PACES
N39°09.95' - W108°16.73'
14000
244°
(23)

LOCALIZER
108.5
I-PKN



NOTE: I-PKN Back Course outbound is normal sensing.

### TAKE-OFF OBSTACLE NOTES

RWY 33: Multiple trees beginning 35' from DER, 386' right of centerline, up to 100' AGL/7722' MSL.  
Multiple trees, bushes and terrain beginning 4' from DER, 400' left of centerline, 100' AGL/7821' MSL.  
Multiple trees and bushes beginning 3484' from DER, 752' left of centerline, up to 100' AGL/8179' MSL.

NOTE: Chart not to scale.

(NARRATIVE ON FOLLOWING PAGE)

SW-1, 11 MAR 2010 to 08 APR 2010