

FITZGERALD, GEORGIA

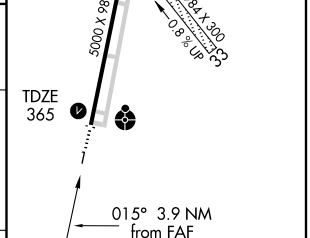
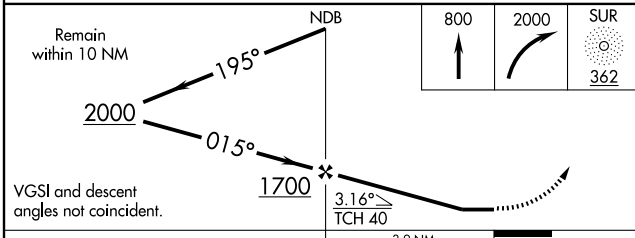
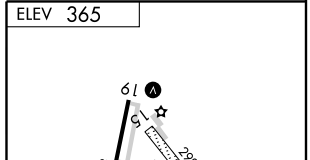
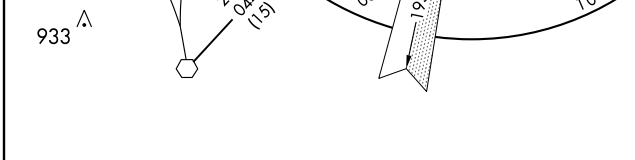
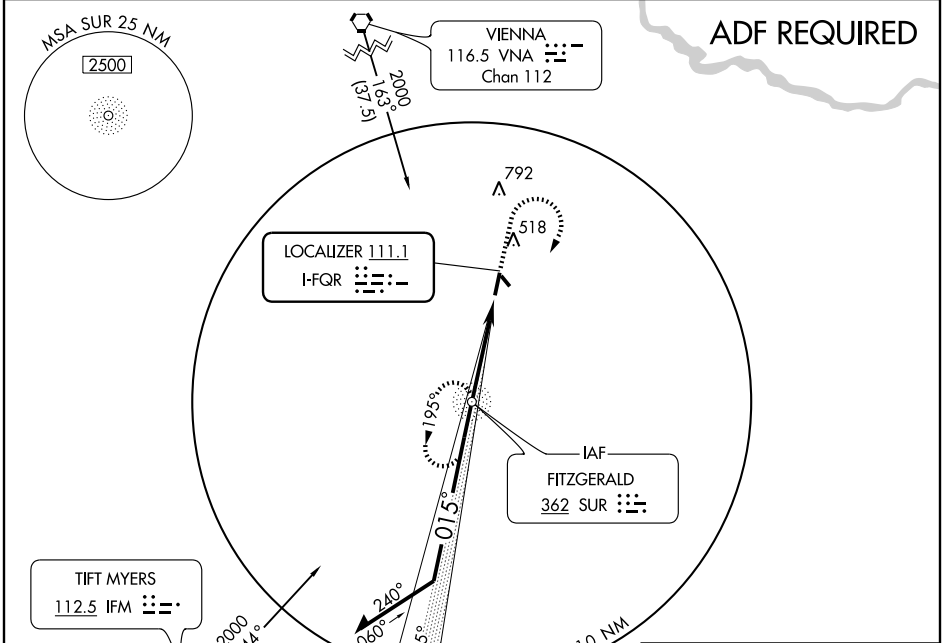
AL-5894 (FAA)

**LOC RWY 1**  
FITZGERALD MUNI (F'ZG)

LOC I-FQR <b>111.1</b>	APP CRS <b>015°</b>	Rwy Idg <b>5002</b>
		TDZE <b>365</b>
		Apt Elev <b>365</b>

<p>▼ ▲ NA</p> <p>Obtain local altimeter setting on AWOS. Visibility reduction by helicopters NA. Inoperative table does not apply.</p>	<p>ODALS</p>	<p>MISSED APPROACH: Climb to 800, then climbing right turn to 2000 direct SUR NDB and hold.</p>
--	--------------	---

<p>AWOS-3 <b>118.625</b></p>	<p>JACKSONVILLE CENTER <b>132.3 290.4</b></p>	<p>GCO <b>121.725</b></p>	<p>UNICOM <b>123.0 (CTAF) 0</b></p>
----------------------------------	---	-------------------------------	---



CATEGORY	A	B	C	D
S-1	740-1	375 (400-1)		740-1½ 375 (400-1½)
CIRCLING	860-1	495 (500-1)	860-1½ 495 (500-1½)	920-2 555 (600-2)

MIRL Rwy 1-19 0				
FAF to MAP 3.9 NM				
Knots	60	90	120	150 180
Min:Sec	3:54	2:36	1:57	1:34 1:18

FITZGERALD, GEORGIA  
Orig-A 08269

31°41'N-83°16'W

**LOC RWY 1**

SE-4, 11 MAR 2010 to 08 APR 2010

SE-4, 11 MAR 2010 to 08 APR 2010