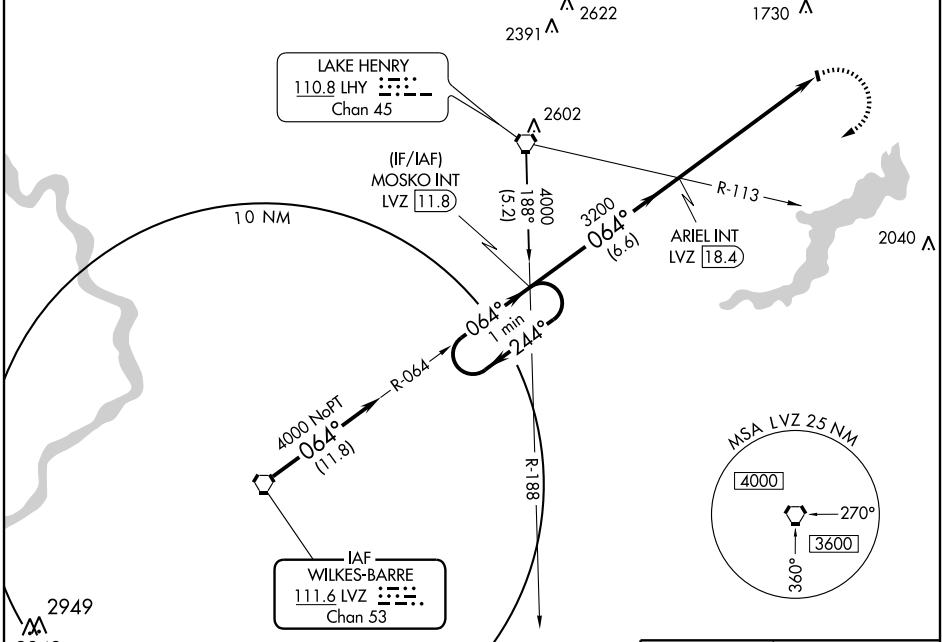


VORTAC LVZ <b>111.6</b> Chan 53	APP CRS <b>064°</b>	Rwy Idg TDZE Apt Elev	<b>N/A</b> <b>N/A</b> <b>1357</b>
---------------------------------------	------------------------	-----------------------------	---

▼ Obtain local altimeter setting on CTAF; when not received, use Wilkes-Barre/Scranton altimeter setting.
 
 MISSED APPROACH: Climbing right turn to 4000 via LVZ R-064 to MOSKO Int/LVZ 11.8 DME and hold.

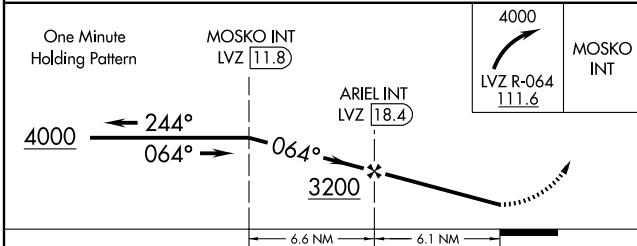
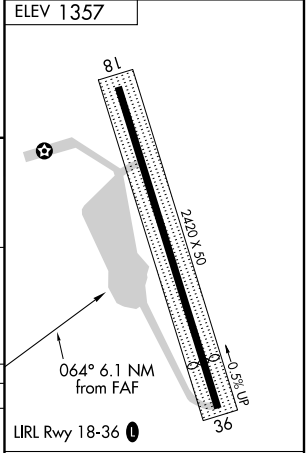
WILKES-BARRE APP CON <b>124.5 256.7</b>	UNICOM <b>122.8</b> (CTAF)	<b>122.75 0</b>
--	-------------------------------	-----------------



NE-4, 11 MAR 2010 to 08 APR 2010

NE-4, 11 MAR 2010 to 08 APR 2010

ELEV 1357
-----------



CATEGORY	A	B	C	D
CIRCLING	2180-1 823 (900-1)	NA		
WILKES-BARRE/SCRANTON ALTIMETER SETTING MINIMUMS				
CIRCLING	2500-1¼ 1143 (1200-1¼)	NA		

FAF to MAP 6.1 NM					
Knots	60	90	120	150	180
Min:Sec	6:06	4:04	3:03	2:26	2:02