

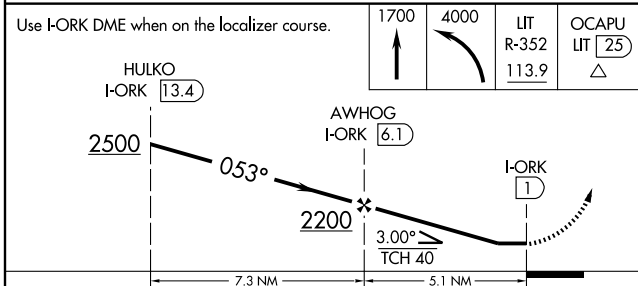
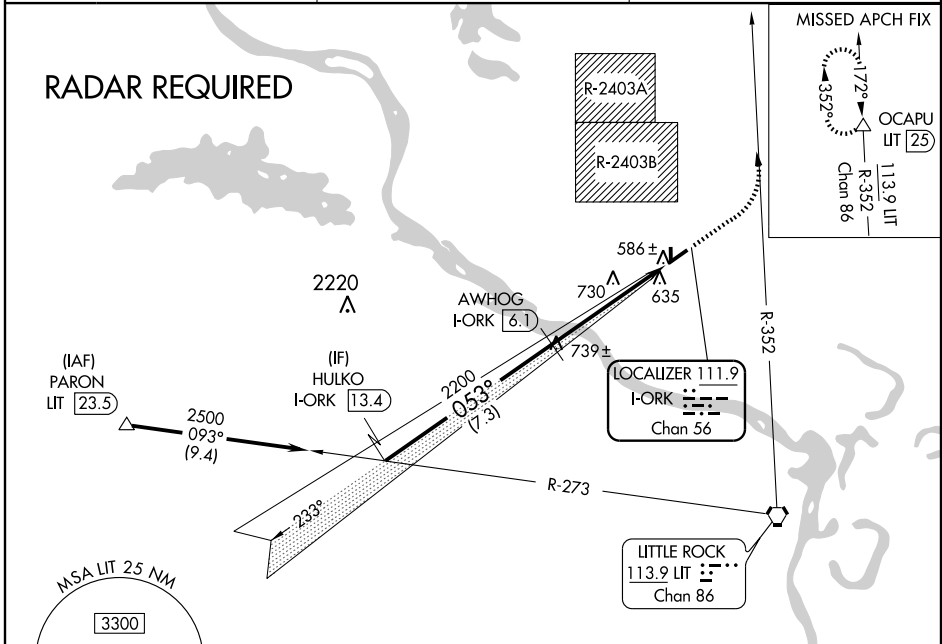
| | | |
|---|------------------------|---|
| LOC/DME I-ORK 111.9 Chan 56 | APP CRS 053° | Rwy Idg 5002 TDZE 541 Apt Elev 545 |
|---|------------------------|---|

LOC/DME RWY 5
NORTH LITTLE ROCK MUNI (ORK)

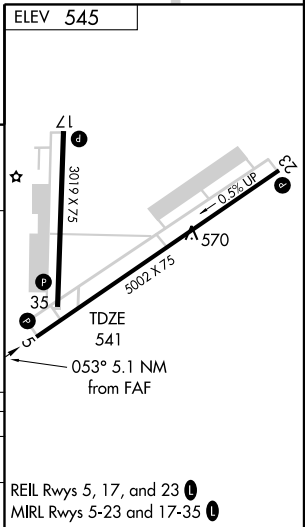
▼ Use Adams Field altimeter setting, if not received use Searcy altimeter setting and increase all MDAs 60 feet. Circling NA for Cat C north of Rwy 5-23 when R-2403B active. Visibility reduction by helicopters NA.

▲ MISSED APPROACH: Climb to 1700 then climbing left turn to 4000 on IIT VORTAC R-352 to OCAPU/25 DME and hold.

| | | |
|---|--------------------------|--|
| LITTLE ROCK APP CON 119.5 306.2 | CLNC DEL 121.6 | UNICOM 122.8 (CTAF) 📻 |
|---|--------------------------|--|



| CATEGORY | A | B | C | D |
|----------|--------|-------------|-------------------------|----|
| S-LOC 5 | 980-1 | 439 (500-1) | 980-1¼ 439 (500-1¼) | NA |
| CIRCLING | 1040-1 | 495 (500-1) | 1040-1½ 495 (500-1½) | NA |



SC-1, 11 MAR 2010 to 08 APR 2010

SC-1, 11 MAR 2010 to 08 APR 2010