

NEW MADRID, MISSOURI

AL-5903 (FAA)

WAAS CH 56414 W36A	APP CRS 360°	Rwy Idg 3200 TDZE 296 Apt Elev 296
--	------------------------	---

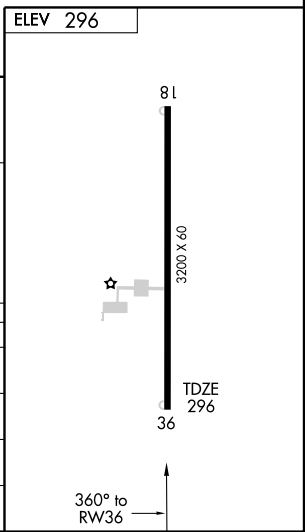
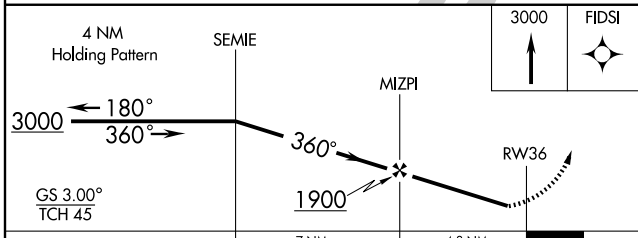
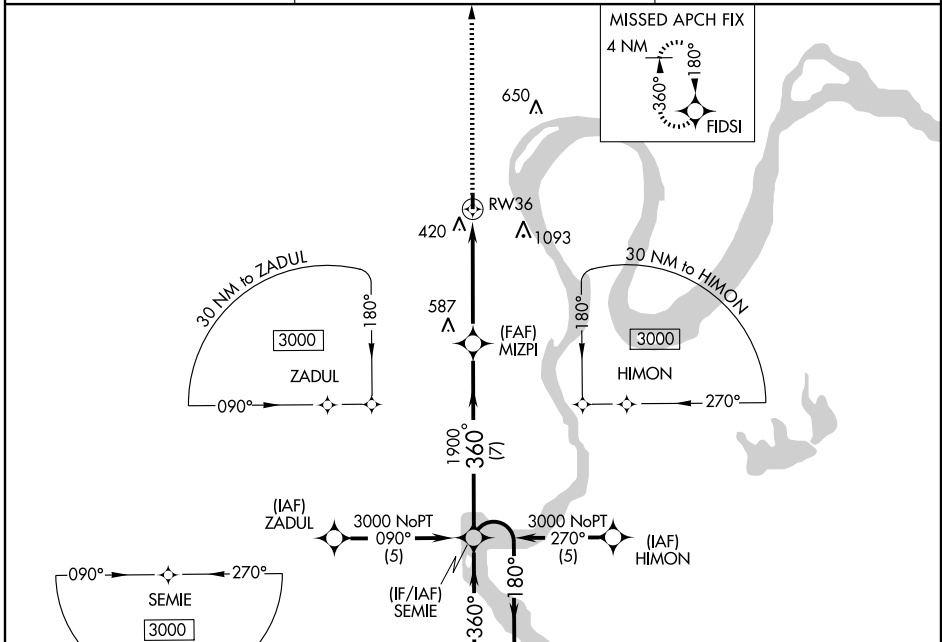
RNAV (GPS) RWY 36

NEW MADRID/COUNTY MEMORIAL (EIW)

⚠ Baro-VNAV NA. DME/DME RNP-0.3 NA. Visibility reduction by helicopters NA. Use Dyersburg altimeter setting; when not received, use Cairo altimeter setting and increase all DA 5 feet and all MDA 20 feet. Straight-in/Circling to Rwy 36 NA at night.

MISSED APPROACH: Climb to 3000 direct FIDSI and hold.

DYERSBURG AWOS-3 135.625	MEMPHIS CENTER 133.65 292.15	UNICOM 122.8 (CTAF) 0
------------------------------------	--	---------------------------------



CATEGORY	A	B	C	D
LPV DA	668-1¼	372 (400-1¼)		NA
LNAV/VNAV DA	900-2¼	604 (700-2¼)		NA
LNAV MDA	820-1	524 (600-1)		NA
CIRCLING	860-1	564 (600-1)		NA

NEW MADRID, MISSOURI
Orig 09295

36°32' N 89°36' W

NEW MADRID/COUNTY MEMORIAL (EIW) RNAV (GPS) RWY 36

NC-3, 19 NOV 2009 to 17 DEC 2009

NC-3, 19 NOV 2009 to 17 DEC 2009