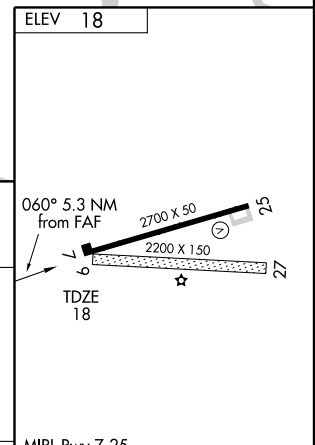
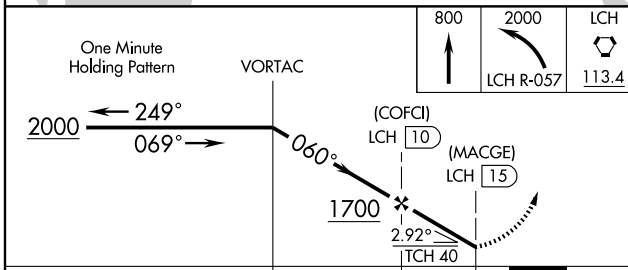
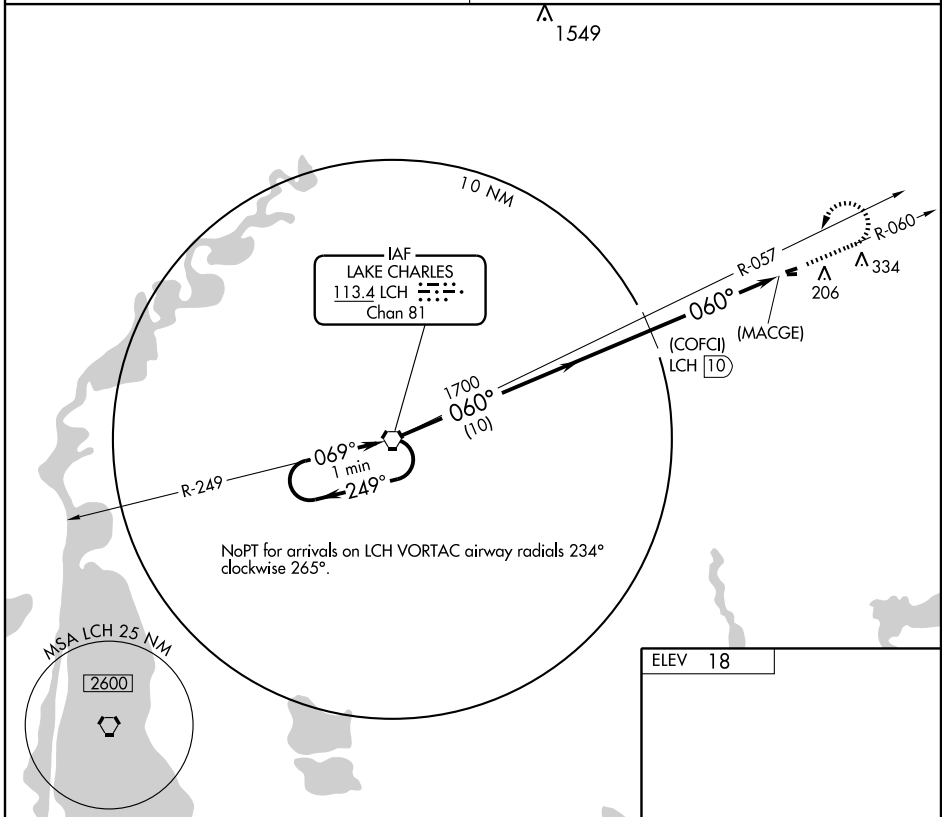


VOR/DME or GPS RWY 7

WELSH (6R.1)

VORTAC LCH 113.4 Chan 81	APP CRS 060°	Rwy Idg 2700 TDZE 18 Apt Elev 18
--	------------------------	---

▲ NA Use Lake Charles altimeter setting.	MISSED APPROACH: Climb to 800 then climbing left turn to 2000 via LCH R-057 to LCH VORTAC.
LAKE CHARLES APP CON ★ 119.8 282.3	UNICOM 122.8 (CTAF)



CATEGORY	A	B	C	D	Knots	60	90	120	150	180
S-7	440-1	422 (500-1)		NA	Min:Sec					
CIRCLING	600-1	582 (600-1)		NA						

SC-4, 19 NOV 2009 to 17 DEC 2009

SC-4, 19 NOV 2009 to 17 DEC 2009