

LEBANON, TENNESSEE

AL-5923 (FAA)

NDB RWY 19

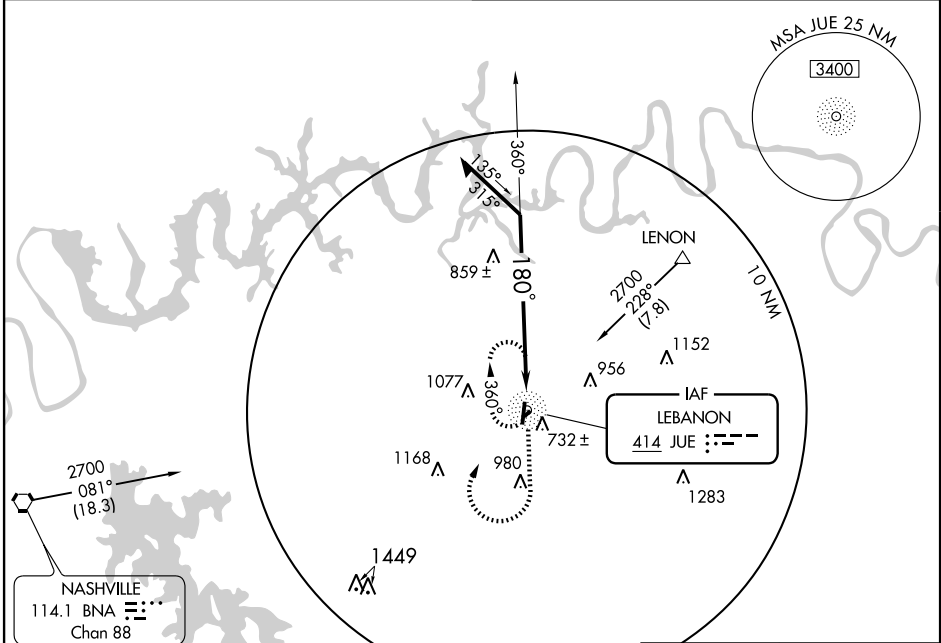
LEBANON MUNI (M54)

NDB JUE	APP CRS	Rwy ldg TDZE	4500
414	180°	Apt Elev	568
			588

NA Visibility reduction by helicopters NA. When local altimeter setting not received, use Nashville Intl altimeter setting and increase all MDA 60 feet, S-19 and Circling Cats. C and D visibility ¼ mile.

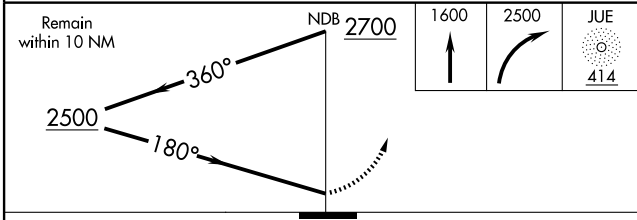
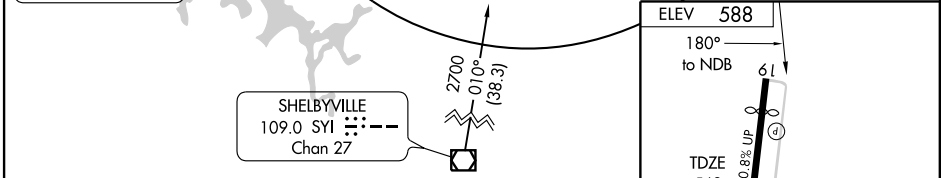
MISSED APPROACH: Climb to 1600 then climbing right turn to 2500 direct JUE NDB and hold.

AWOS-3 118.325	NASHVILLE APP CON 118.4 360.7	GCO 135.075	UNICOM 122.725 (CTAF)
--------------------------	---	-----------------------	---------------------------------



SE-1, 19 NOV 2009 to 17 DEC 2009

SE-1, 19 NOV 2009 to 17 DEC 2009



CATEGORY	A	B	C	D
S-19	1220-1	652 (700-1)	1220-1¼ 652 (700-1¼)	1220-2 652 (700-2)
CIRCLING	1220-1	632 (700-1)	1220-1¼ 632 (700-1¼)	1440-2¾ 852 (900-2¾)

LEBANON, TENNESSEE
Amdt 1 09071

36°11' N - 86°19' W

LEBANON MUNI (M54)

NDB RWY 19

MIRL Rwy 1-19
REIL Rws 1 and 19