

RNAV (GPS) RWY 1

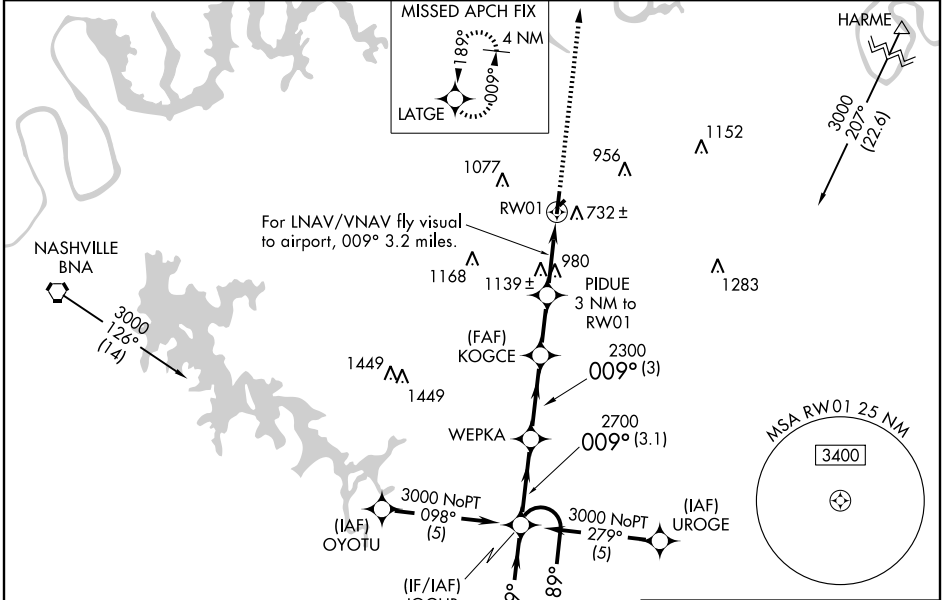
LEBANON MUNI (M54)

WAAS CH 65809 W01A	APP CRS 009°	Rwy Idg TDZE Apt Elev	4527 588 588
--	------------------------	-----------------------------	---

For uncompensated Baro-VNAV systems, LNAV/VNAV NA below -16° C (4° F) or above 47° C (116° F). DME/DME RNP-0.3 NA. Visibility reduction by helicopters NA. When local altimeter setting not received, use Nashville Intl altimeter setting and increase LPV DA 43 feet and all MDA 60 feet, increase LPV all Cats. visibility ¼ mile and Circling Cat. D visibility ¼ mile. LNAV/VNAV NA when using Nashville Intl altimeter setting.

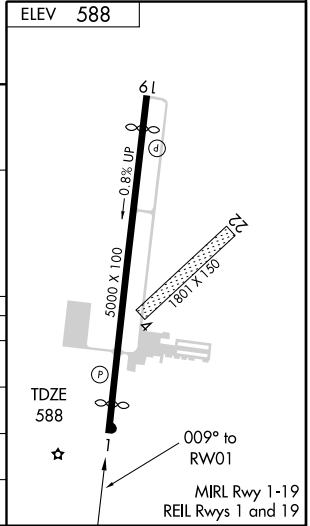
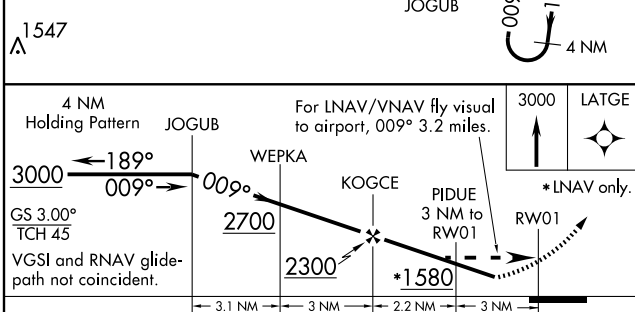
MISSED APPROACH:
Climb to 3000 direct
LATGE and hold.

AWOS-3 118.325	NASHVILLE APP CON 118.4 360.7	GCO 135.075	UNICOM 122.725 (CTAF)
--------------------------	---	-----------------------	---------------------------------



SE-1, 19 NOV 2009 to 17 DEC 2009

SE-1, 19 NOV 2009 to 17 DEC 2009



CATEGORY	A	B	C	D
LPV DA	1088-1¾ 500 (500-1¾)			
LNAV/VNAV DA	1663-2	1075 (1100-2)	1663-3	1075 (1100-3)
LNAV MDA	1400-1 812 (900-1)	1400-1¼ 812 (900-1¼)	1400-2½ 812 (900-2½)	1400-2¾ 812 (900-2¾)
CIRCLING	1400-1 812 (900-1)	1400-1¼ 812 (900-1¼)	1400-2½ 812 (900-2½)	1440-2¾ 852 (900-2¾)