

LEBANON, TENNESSEE

AL-5923 (FAA)

RNAV (GPS) RWY 19

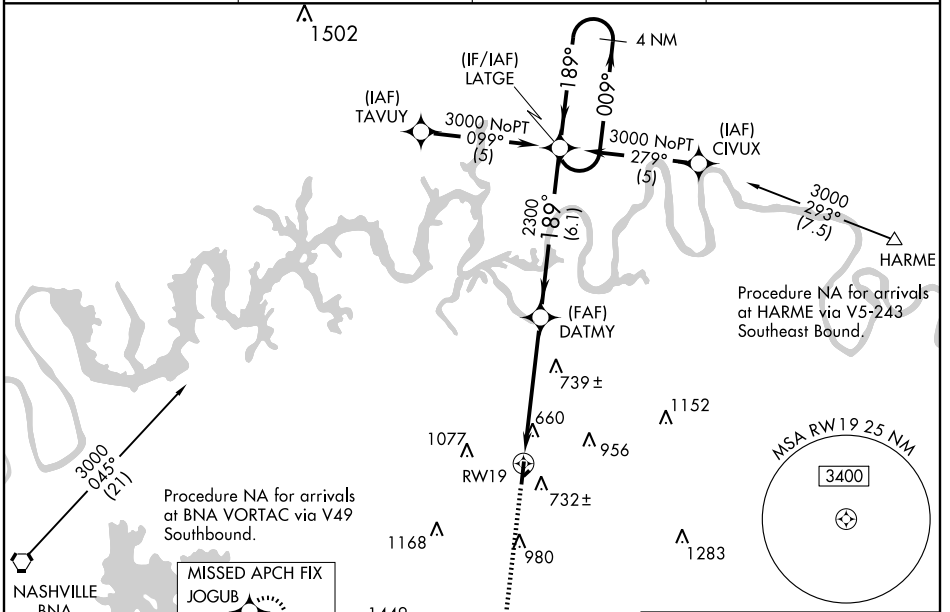
LEBANON MUNI (M54)

| | | |
|--|------------------------|--|
| WAAS CH 90309 W19A | APP CRS 189° | Rwy Idg TDZE 4500 568 Apt Elev 588 |
|--|------------------------|--|

Baro-VNAV NA when using Nashville Intl altimeter setting. For uncompensated Baro-VNAV systems, LNAV/VNAV NA below -16° C (4° F) or above 47° C (116° F). DME/DME RNP-0.3 NA. Visibility reduction by helicopters NA. When local altimeter setting not received, use Nashville Intl altimeter setting and increase all DA 43 feet and all MDA 60 feet, increase LNAV/VNAV all Cats., and Circling Cats. C and D visibility ¼ mile.

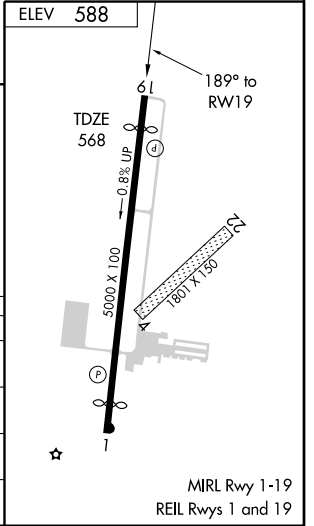
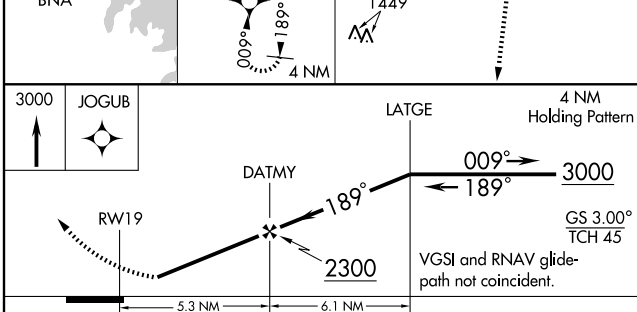
MISSED APPROACH:
Climb to 3000 direct JOGUB and hold.

| | | | |
|--------------------------|---|-----------------------|---------------------------------|
| AWOS-3 118.325 | NASHVILLE APP CON 118.4 360.7 | GCO 135.075 | UNICOM 122.725 (CTAF) |
|--------------------------|---|-----------------------|---------------------------------|



SE-1, 19 NOV 2009 to 17 DEC 2009

SE-1, 19 NOV 2009 to 17 DEC 2009



| CATEGORY | A | B | C | D |
|--------------|--------|-------------|-------------------------|-------------------------|
| LPV DA | 899-1¼ | | 331 (400-1¼) | |
| LNAV/VNAV DA | 996-1½ | | 428 (500-1½) | |
| LNAV MDA | 1000-1 | 432 (500-1) | 1000-1¼ 432 (500-1¼) | 1000-1½ 432 (500-1½) |
| CIRCLING | 1100-1 | 512 (600-1) | 1200-1¾ 612 (700-1¾) | 1440-2¾ 852 (900-2¾) |

LEBANON, TENNESSEE
Orig 09071

36°11' N - 86°19' W

RNAV (GPS) RWY 19

LEBANON MUNI (M54)

MIRL Rwy 1-19
REIL Rws 1 and 19