

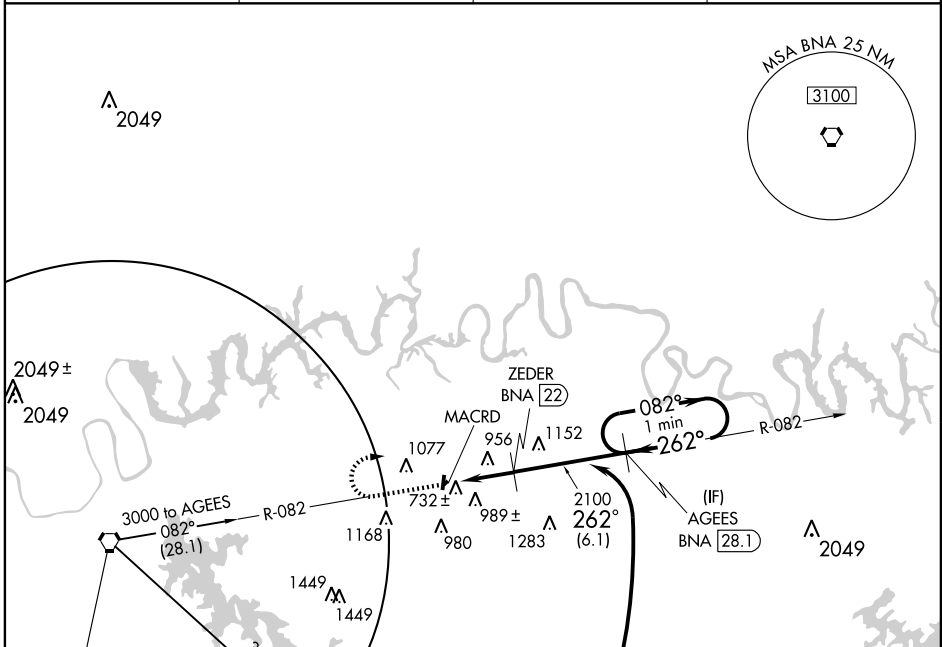
VORTAC BNA <b>114.1</b> Chan <b>88</b>	APP CRS <b>262°</b>	Rwy Idg TDZE Apt Elev	<b>N/A</b> <b>N/A</b> <b>588</b>
--	------------------------	-----------------------------	--

**VOR/DME-A**  
LEBANON MUNI (M54)

**NA** When local altimeter setting not received, use Nashville Intl altimeter setting and increase MDA 60 feet and Cats. C and D visibility ¼ mile.

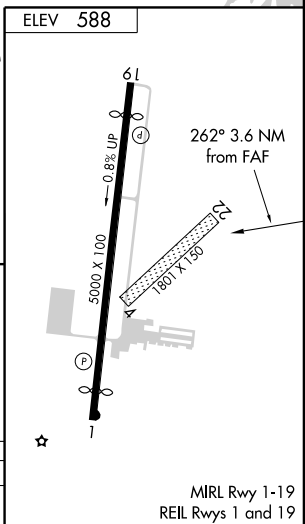
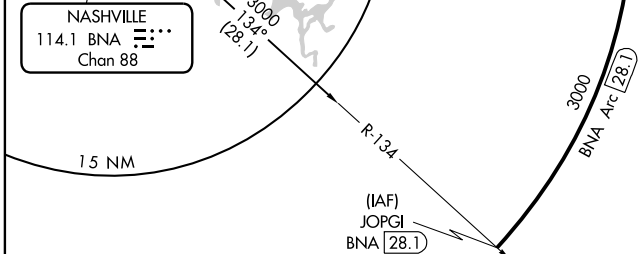
MISSED APPROACH: Climb to 1500 then climbing right turn to 3000 via BNA VORTAC R-082 to AGEES/BNA 28.1 DME and hold.

AWOS-3 <b>118.325</b>	NASHVILLE APP CON <b>118.4 360.7</b>	GCO <b>135.075</b>	UNICOM <b>122.725</b> (CTAF)
--------------------------	---	-----------------------	---------------------------------



SE-1, 11 FEB 2010 to 11 MAR 2010

SE-1, 11 FEB 2010 to 11 MAR 2010



1500	3000	AGEES BNA 28.1	ZEDER BNA 22	AGEES BNA 28.1	One Minute Holding Pattern
↑	↘	BNA R-082 114.1	MACRD BNA 18.4	262°	082° → 3000
				2100	← 262°
					3.6 NM
					6.1 NM

CATEGORY	A	B	C	D
CIRCLING	1 240-1	652 (700-1)	1 240-1¾ 652 (700-1¾)	1 440-2¾ 852 (900-2¾)

MIRL Rwy 1-19  
REIL Rwy 1 and 19