

TELL CITY, INDIANA

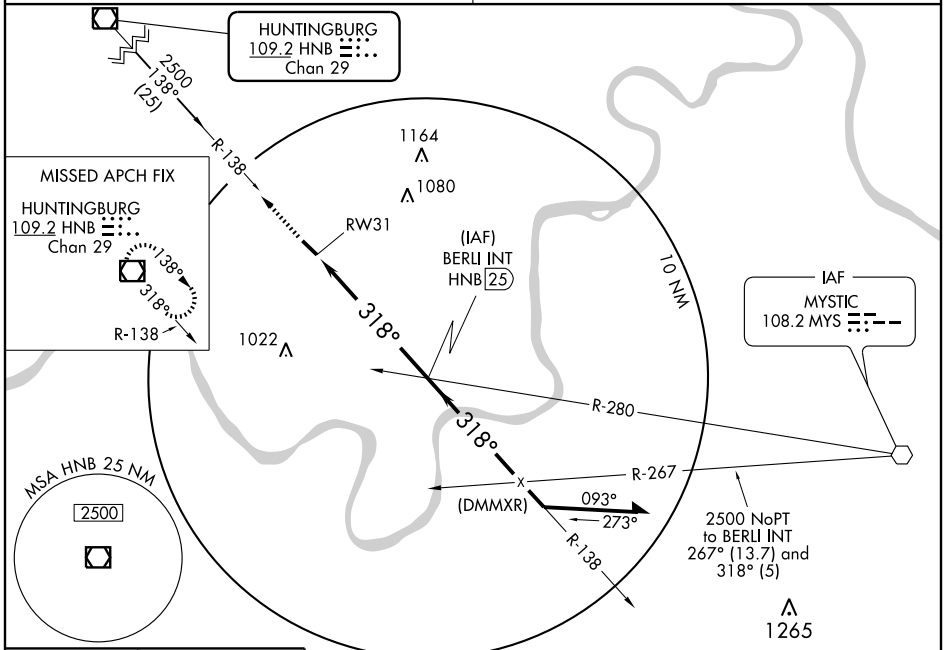
AL-5928 (FAA)

VOR/DME HNB 109.2 Chan 29	APP CRS 318°	Rwy Idg 4400 TDZE 659 Apt Elev 659
----------------------------------------	------------------------	---------------------------------------------------------------

VOR or GPS RWY 31

TELL CITY / PERRY COUNTY MUNI (TEL)

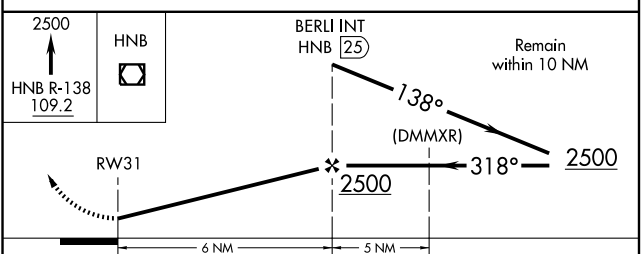
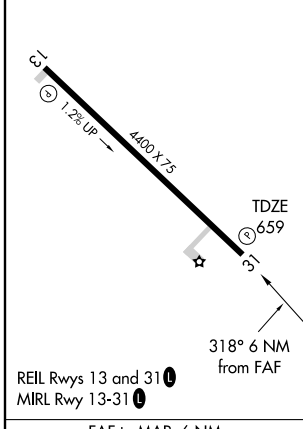
<p>▼ Obtain local altimeter setting on CTAF; when not received, use Evansville altimeter setting.</p> <p>▲ NA</p>	<p>MISSED APPROACH: Climb to 2500 via HNB R-138 to HNB VOR/DME and hold.</p>
<p>EVANSVILLE APP CON *</p> <p>126.4 226.4</p>	<p>UNICOM</p> <p>122.7 (CTAF) 0</p>



EC-2, 19 NOV 2009 to 17 DEC 2009

EC-2, 19 NOV 2009 to 17 DEC 2009

ELEV 659



CATEGORY	A	B	C	D
S-31	1240-1	581 (600-1)	1240-1½ 581 (600-1½)	NA
CIRCLING	1240-1	581 (600-1)	1240-1½ 581 (600-1½)	NA
EVANSVILLE ALTIMETER SETTING MINIMUMS				
S-31	1360-1	701 (800-1)	1360-2 701 (800-2)	NA
CIRCLING	1360-1	701 (800-1)	1360-2 701 (800-2)	NA

FAF to MAP 6 NM					
Knots	60	90	120	150	180
Min:Sec	6:00	4:00	3:00	2:24	2:00

TELL CITY, INDIANA
Amdt 5 09295

38°01'N - 86°42'W

TELL CITY / PERRY COUNTY MUNI (TEL)
VOR or GPS RWY 31