

LANCASTER, TEXAS

AL-5936 (FAA)

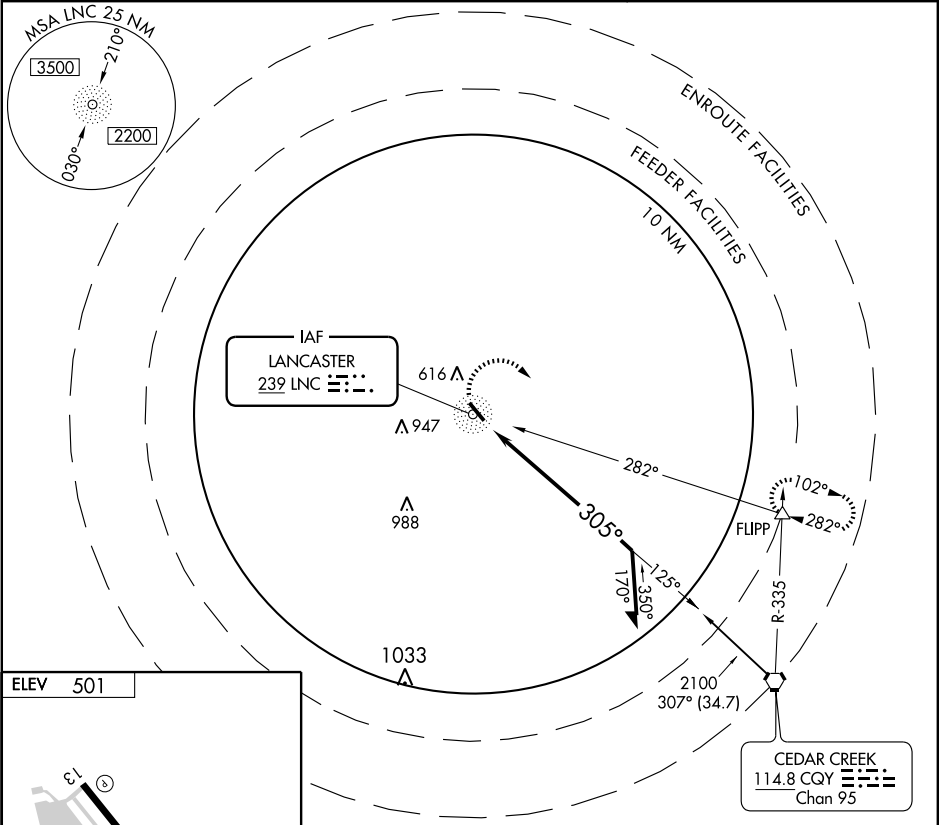
NDB RWY 31

LANCASTER (LNC)

NDB LNC 239	APP CRS 305°	Rwy Idg TDZE Apt Elev	4999 492 501
-----------------------	------------------------	-----------------------------	---

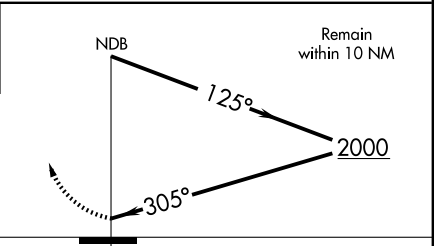
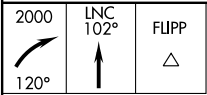
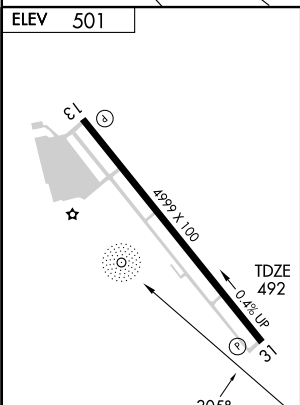
▼ If local altimeter setting not received, use Dallas-Love Field altimeter setting and increase all MDA's 60 feet. MISSED APPROACH: Climbing right turn to 2000 via heading 120° and 102° bearing from LNC NDB to FLIPP Int and hold.

AWOS-3 118.975	REGIONAL APP CON 125.2 343.65	UNICOM 122.7 (CTAF)
--------------------------	---	-------------------------------



SC-2, 19 NOV 2009 to 17 DEC 2009

SC-2, 19 NOV 2009 to 17 DEC 2009



CATEGORY	A	B	C	D
S-31	1080-1	588 (600-1)		NA
CIRCLING	1080-1	579 (600-1)		NA

LANCASTER, TEXAS
Amdt 2 04218

32°35'N-96°43'W

LANCASTER (LNC) NDB RWY 31