

RNAV (GPS) RWY 31

LANCASTER (LNC)

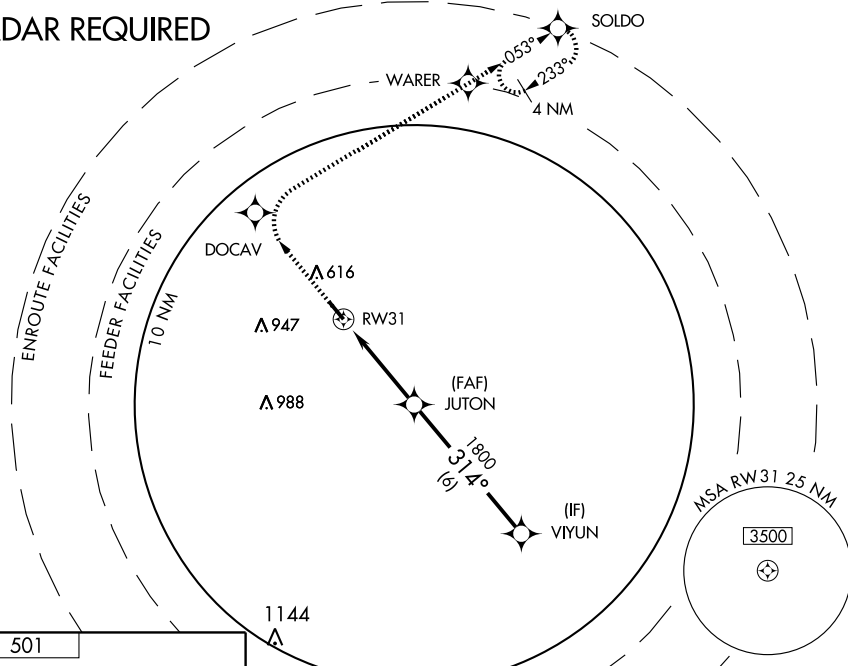
WAAS Chan 97305 W31A	APP CRS 314°	Rwy Idg 4999 TDZE 492 Apt Elev 501
--	------------------------	---

▼ If local altimeter setting not received, use Dallas-Love Field altimeter setting and increase all DAs/MDAs 60 feet. VDP and BARO-VNAV NA when using Dallas-Love Field altimeter setting. BARO-VNAV NA below -16°C (4°F). DME/DME RNP-0.3 NA.

MISSED APPROACH: Climb to 2000 direct DOCAV and turn right via 053° track to WARER, then climb to 3000 via 053° track to SOLD0 and hold.

AWOS-3 118.975	REGIONAL APP CON 125.2 343.65	UNICOM 122.7 (CTAF)
--------------------------	---	-------------------------------

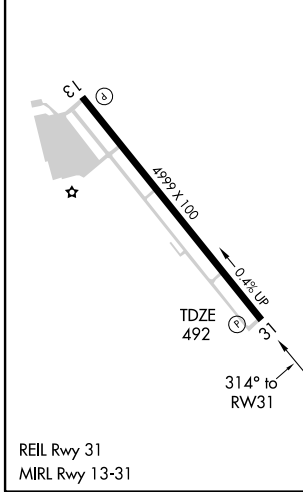
RADAR REQUIRED



SC-2, 19 NOV 2009 to 17 DEC 2009

SC-2, 19 NOV 2009 to 17 DEC 2009

ELEV 501



2000	DOCAV	WARER	3000	SOLD0	Procedure Turn NA
↑	✦	↶	↑	✦	VIYUN
		TRK 053°			
* LNAV only.		JUTON		2700	
		* 1 NM to RW31			GS 3.00° TCH 45
		1800			
		VGS1 and RNAV glidepath not coincident.			
		1 NM	3 NM	6 NM	
CATEGORY	A	B	C	D	
LPV DA	750-1	258 (300-1)		NA	
LNAV/VNAV DA	820-1¼	328 (400-1¼)		NA	
LNAV MDA	840-1	348 (400-1)		NA	
CIRCLING	980-1¼	479 (500-1¼)		NA	