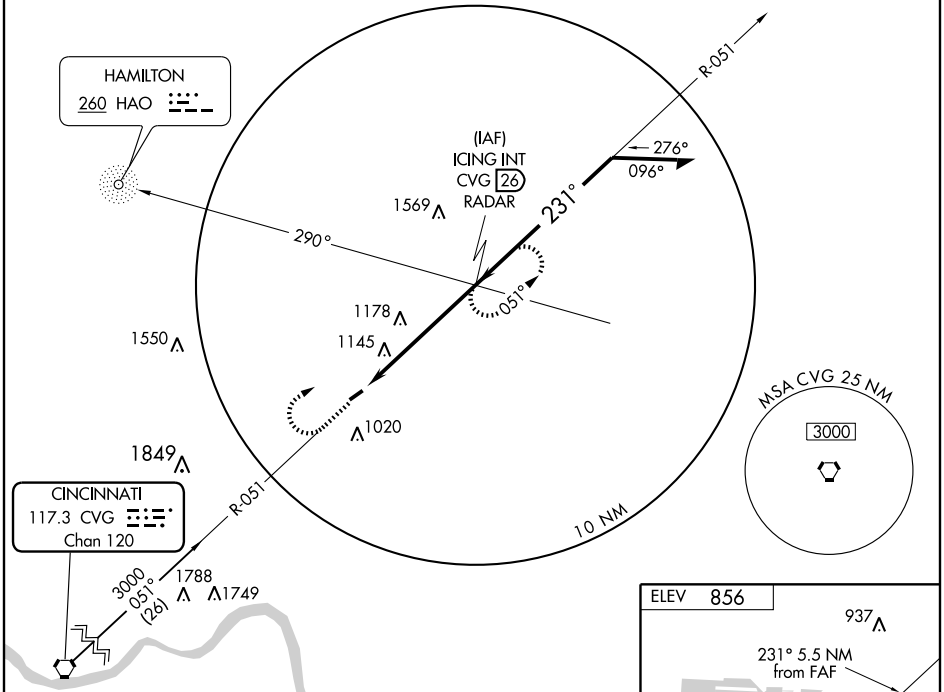


VORTAC CVG <b>117.3</b> Chan <b>120</b>	APP CRS <b>231°</b>	Rwy Idg TDZE Apt Elev	<b>3500</b> <b>851</b> <b>856</b>
---	------------------------	-----------------------------	---

**VOR RWY 24**  
CINCINNATI-BLUE ASH (ISZ)

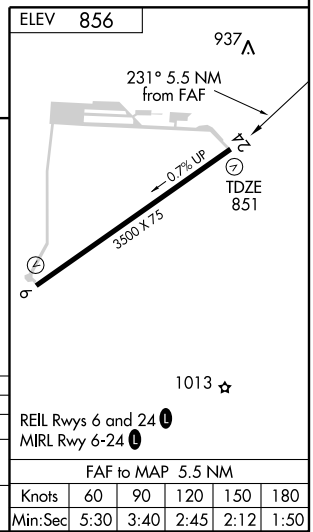
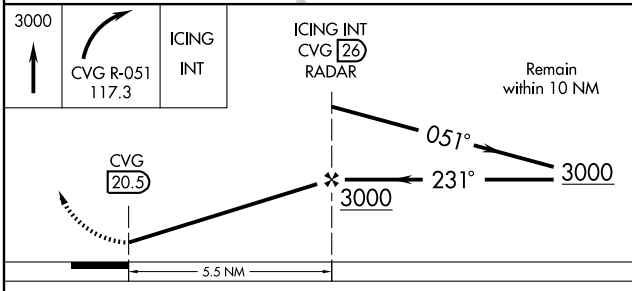
▲ NA		MISSED APPROACH: Climb to 3000 then right turn via CVG R-051 to ICING Int/26 DME/RADAR and hold.	
AWOS-3 <b>118.475</b>	CINCINNATI APP CON <b>121.0 257.725</b>	CLNC DEL <b>124.9</b>	UNICOM <b>123.0 (CTAF) 0</b>

**ADF, DME or RADAR REQUIRED**



EC-2, 19 NOV 2009 to 17 DEC 2009

EC-2, 19 NOV 2009 to 17 DEC 2009



CATEGORY	A	B	C	D
S-24	1480-1 629 (700-1)	1480-1¼ 629 (700-1¼)	1480-1½ 629 (700-1½)	NA
CIRCLING	1480-1 624 (700-1)	1520-1¼ 664 (700-1¼)	1520-1¾ 664 (700-1¾)	NA

REIL Rwy 6 and 24 0					
MIRL Rwy 6-24 0					
FAF to MAP 5.5 NM					
Knots	60	90	120	150	180
Min:Sec	5:30	3:40	2:45	2:12	1:50