

BATAVIA, OHIO

AL-5955 (FAA)

RNAV (GPS) RWY 22

BATAVIA / CLERMONT COUNTY (I69)

APP CRS 221°	Rwy Idg 3566
	TDZE 841
	Apt Elev 844

NA DME/DME RNP-0.3 NA. Use Cincinnati-Blue Ash altimeter setting, if not received, use Cincinnati Lunken Field altimeter setting and increase all MDAs 40 feet.

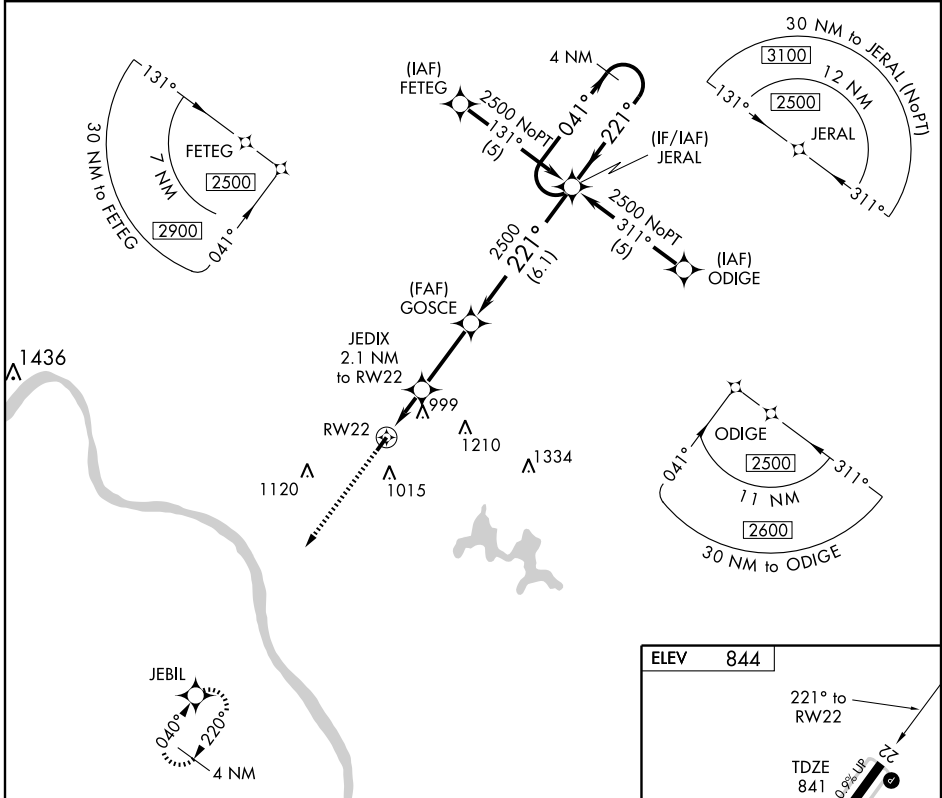
MISSED APPROACH: Climb to 2500 direct JEBIL and hold.

CINCINNATI-BLUE ASH
AWOS-3
118.475

CINCINNATI APP CON
121.0 257.725

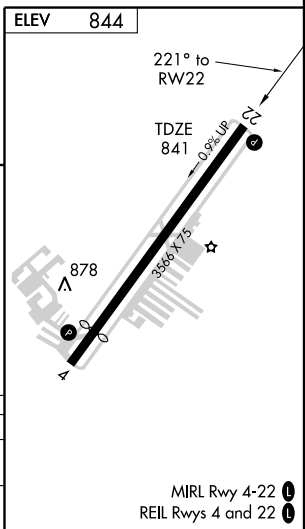
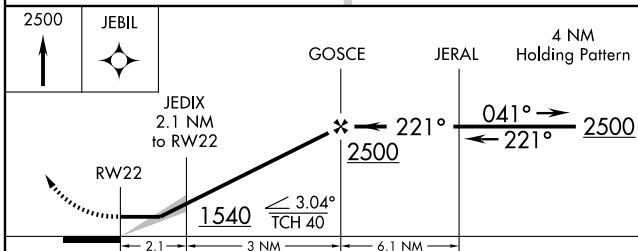
CLNC DEL
124.9

UNICOM
122.975 (CTAF)



EC-2, 19 NOV 2009 to 17 DEC 2009

EC-2, 19 NOV 2009 to 17 DEC 2009



CATEGORY	A	B	C	D
RNAV MDA	1300-1	459 (500-1)	1300-1½ 459 (500-1½)	NA
CIRCLING	1360-1	516 (600-1)	1360-1½ 516 (600-1½)	NA

BATAVIA, OHIO
Orig 09127

39°05'N - 84°13'W

BATAVIA / CLERMONT COUNTY (I69)
RNAV (GPS) RWY 22

MIRL Rwy 4-22
REIL Rws 4 and 22