

# LOC RWY 16

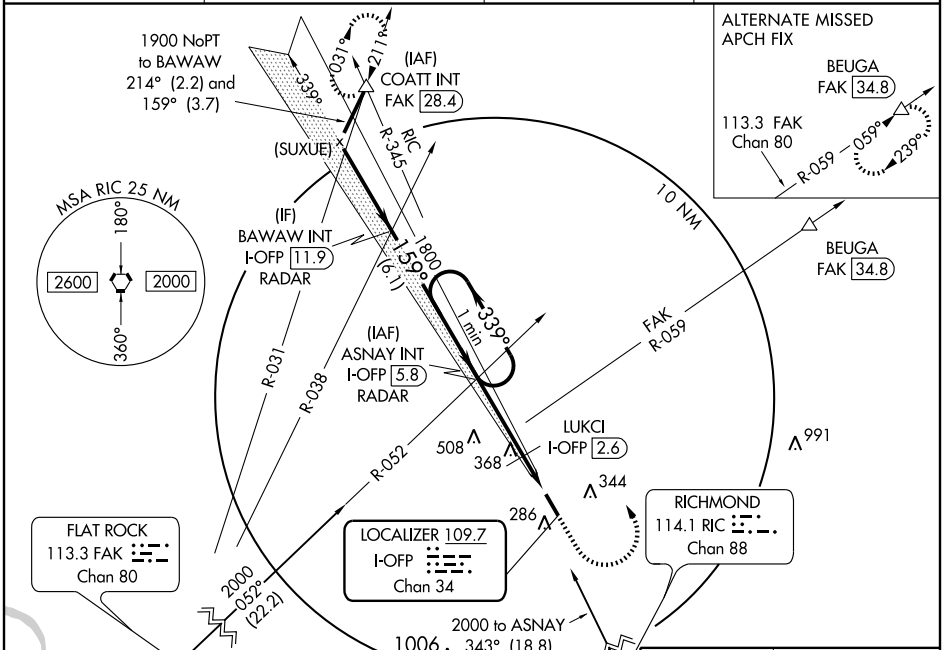
RICHMOND/ASHLAND/ HANOVER COUNTY MUNI (OFP)

LOC/DME I-OPP <b>109.7</b> Chan <b>34</b>	APP CRS <b>159°</b>	Rwy Idg <b>5402</b> TDZE <b>207</b> Apt Elev <b>207</b>
---	------------------------	---

**V** Circling to Rwy 34 NA at night. Visibility reduction by helicopters NA.  
**▲ NA** When local altimeter setting not received, use Richmond Intl altimeter setting and increase all MDAs 40 feet.

**MISSED APPROACH:** Climb to 700 then climbing left turn to 2000 via RIC VORTAC R-345 to COATT INT and hold.

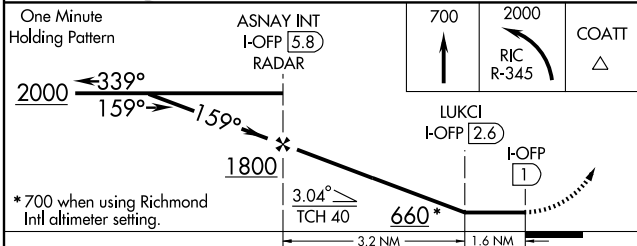
ASOS <b>119.025</b>	POTOMAC APP CON <b>134.7 307.2</b>	CLNC DEL <b>125.4</b>	UNICOM <b>122.7 (CTAF) 0</b>
------------------------	---------------------------------------	--------------------------	---------------------------------



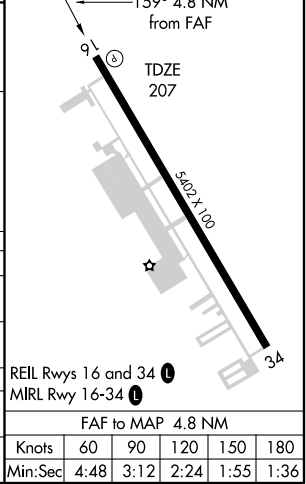
NE-3, 11 MAR 2010 to 08 APR 2010

NE-3, 11 MAR 2010 to 08 APR 2010

ELEV 207



CATEGORY	A	B	C	D
S-16	660-1	453 (500-1)	660 - 1 ¼ 453 (500-1 ¼)	660 - 1 ½ 453 (500-1 ½)
CIRCLING	660-1	453 (500-1)	660 - 1 ½ 453 (500-1 ½)	760 - 2 553 (600-2)
<b>LUKCI FIX MINIMUMS</b>				
S-16	560-1 353 (400-1)			560 - 1 ¼ 353 (400-1 ¼)
CIRCLING	620 - 1 413 (500-1)	660 - 1 453 (500-1)	660 - 1 ½ 453 (500-1 ½)	760 - 2 553 (600-2)



# LOC RWY 16

REIL Rwys 16 and 34 **0**  
MIRL Rwy 16-34 **0**

FAF to MAP 4.8 NM

Knots	60	90	120	150	180
Min:Sec	4:48	3:12	2:24	1:55	1:36