

# LOC RWY 19

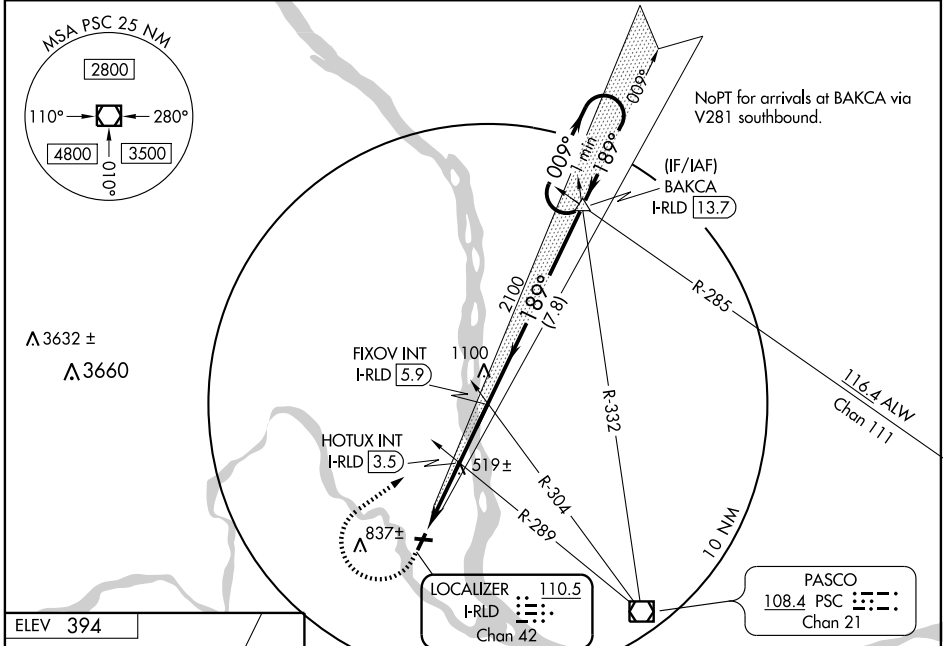
RICHLAND (R.LD)

LOC/DME I-RLD <b>110.5</b> Chan 42	APP CRS <b>189°</b>	Rwy Idg TDZE Apt Elev	<b>4009</b> <b>390</b> <b>394</b>
------------------------------------------	------------------------	-----------------------------	-----------------------------------------

**NA** Visibility reduction by helicopters NA.  
VDP NA when using Pasco altimeter setting.  
When local altimeter setting not received, use Pasco altimeter setting and increase all MDA 40 feet.  
Inoperative table does not apply to S-19 all Cats, and HOTUX fix minimums S-19 Cat C.

**MALS**  
MISSED APPROACH: Climbing right turn to 4000 via heading 038° and I-RLD NE course to BAKCA INT/I-RLD 13.7 DME and hold.

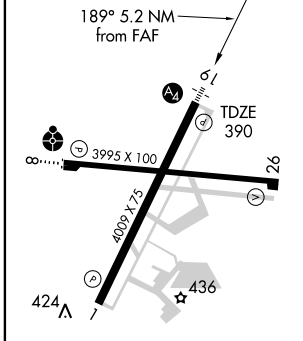
AWOS-3 <b>132.675</b>	CHINOOK APP CON* <b>128.75 377.2</b>	CLNC DEL <b>122.4</b>	UNICOM <b>122.7 (CTAF)</b>
--------------------------	-----------------------------------------	--------------------------	-------------------------------



NW-1, 11 MAR 2010 to 08 APR 2010

NW-1, 11 MAR 2010 to 08 APR 2010

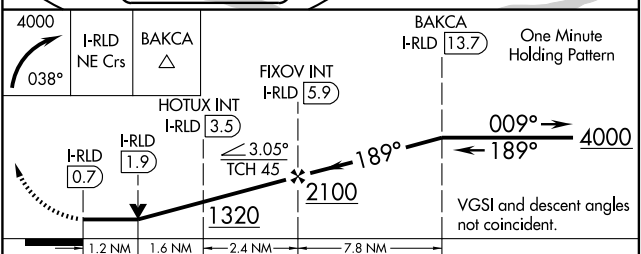
ELEV 394
----------



REIL Rwy 1 and 19  
MIRL Rwy 1-19  
MIRL Rwy 8-26

FAF to MAP 5.2 NM

Knots	60	90	120	150	180
Min:Sec	5:12	3:28	2:36	2:05	1:44



CATEGORY	A		B		C		D	
	S-19	1320-1¼	930 (1000-1¼)	1320-2¾	930 (1000-2¾)	1320-3	930 (1000-3)	1320-3
CIRCLING	1320-1¼	926 (1000-1¼)	1320-2¾	926 (1000-2¾)	1320-3	926 (1000-3)	1320-3	926 (1000-3)
HOTUX FIX MINIMUMS								
S-19	800-¾	410 (500-¾)	800-1¼	410 (500-1¼)	1100-2¼	710 (800-2¼)	1100-2¼	710 (800-2¼)
CIRCLING	980-1	586 (600-1)	1000-1	606 (700-1)	1000-1¾	746 (800-2½)	1140-2½	746 (800-2½)