

WISE, VIRGINIA

AL-5973 (FAA)

WAAS CH <b>77602</b> <b>W24A</b>	APP CRS <b>242°</b>	Rwy ldg TDZE Apt Elev	<b>5280</b> <b>2684</b> <b>2684</b>
--	------------------------	-----------------------------	---

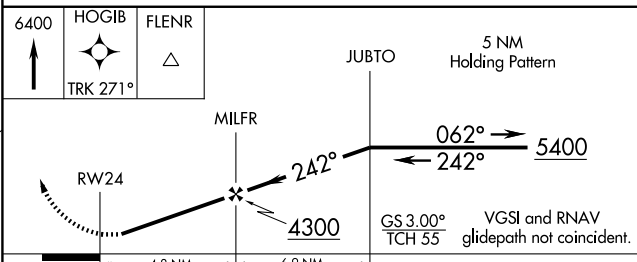
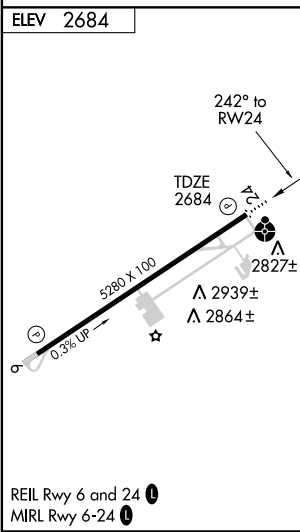
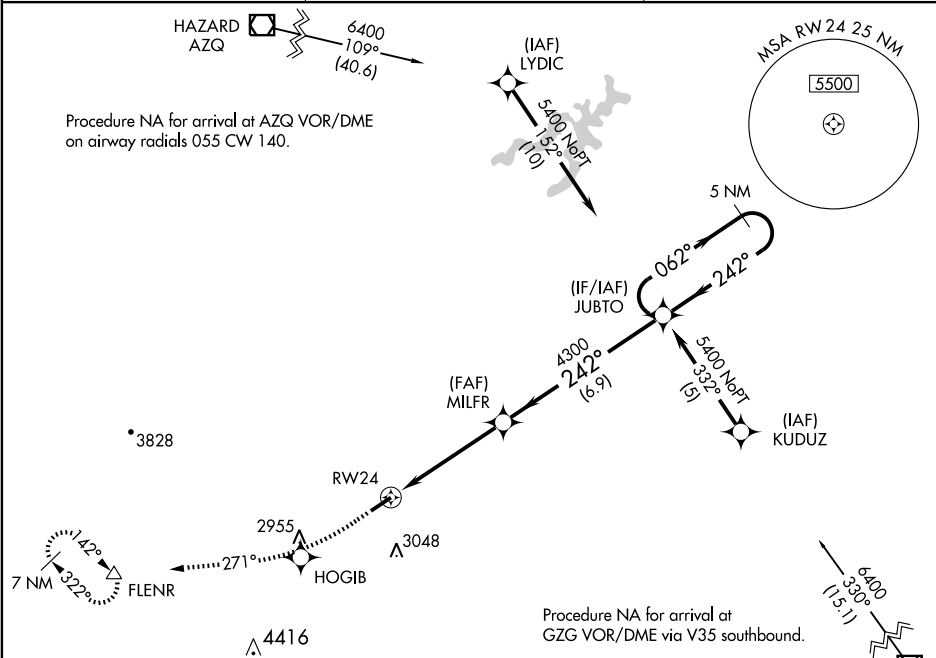
# RNAV (GPS) RWY 24

WISE / LONESOME PINE (LNP)

**⚠** Inoperative table does not apply. For uncompensated Baro-VNAV systems, LNAV/VNAV NA below -20°C (-4°F) or above 43°C (110°F).  
**⚠** DME/DME RNP-0.3 NA. Visibility reduction by helicopters NA.

**ODALS** MISSED APPROACH: Climb to 6400 direct HOGIB and via 271° track to FLENR and hold, continue climb-in-hold to 6400.

AWOS-3 <b>118.6</b>	INDIANAPOLIS CENTER <b>126.57 253.5</b>	UNICOM <b>123.0</b> (CTAF)
------------------------	--	-------------------------------



CATEGORY	A	B	C	D
LPV DA	3021 - 1¼		337 (400-1¼)	
LNAV/VNAV DA	3126 - 1½		442 (500-1½)	
LNAV MDA	3400 - 1	716 (800-1)	3400 - 2	3400 - 2¼ 716 (800-2¼)
CIRCLING	3440 - 1½	756 (800-1½)	3460 - 2¼ 776 (800-2¼)	3560 - 2¾ 876 (900-2¾)

WISE, VIRGINIA  
Orig 08157

36°59'N - 82°32'W

# WISE / LONESOME PINE (LNP)

## RNAV (GPS) RWY 24

NE-3, 11 MAR 2010 to 08 APR 2010

NE-3, 11 MAR 2010 to 08 APR 2010