

WISE, VIRGINIA

AL-5973 (FAA)

RNAV (GPS) RWY 6

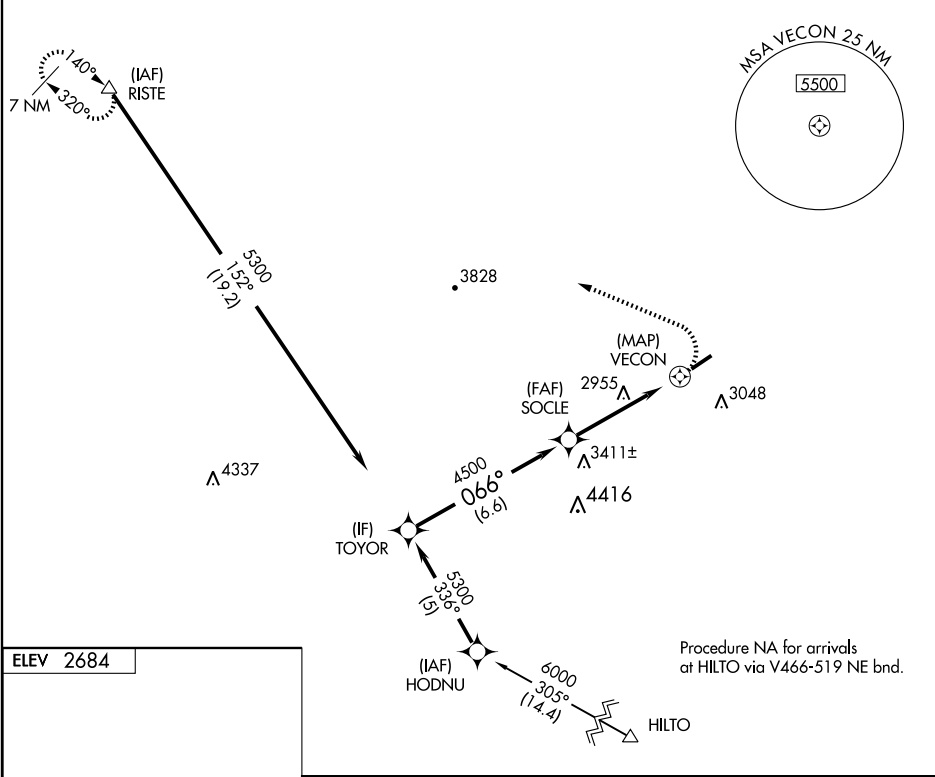
WISE/LONESOME PINE (LNP)

APP CRS 066°	Rwy Idg 5280
	TDZE 2671
	Apt Elev 2684

⚠ If local altimeter setting not received, use Virginia Highlands altimeter setting and increase all MDAs 160 feet. Visibility reduction by helicopters NA. DME/DME RNP-0.3 NA.

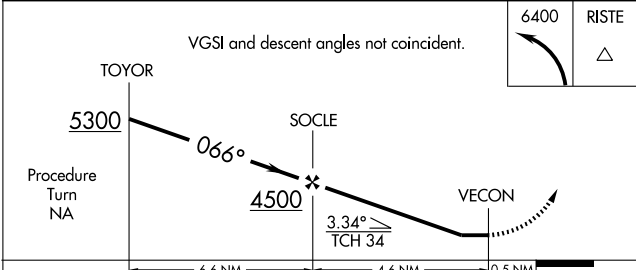
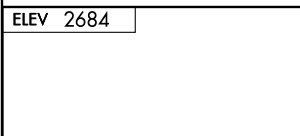
MISSED APPROACH: Climbing left turn to 6400 direct RISTE and hold.

AWOS-3 118.6	INDIANAPOLIS CENTER 126.57 253.5	UNICOM 123.0 (CTAF) 0
------------------------	--	---------------------------------



NE-3, 11 MAR 2010 to 08 APR 2010

NE-3, 11 MAR 2010 to 08 APR 2010



CATEGORY	A	B	C	D
LNAV MDA	3260 - 1	589 (600-1)	3260 - 1½ 589 (600-1½)	3260 - 1¾ 589 (600-1¾)
CIRCLING	3260 - 1	576 (600-1)	3260 - 1½ 576 (600-1½)	3360 - 2¼ 676 (700-2¼)

WISE, VIRGINIA
Orig 08101

36°59'N - 82°32'W

WISE/LONESOME PINE (LNP)
RNAV (GPS) RWY 6