

MOBERLY, MISSOURI

AL-5976 (FAA)

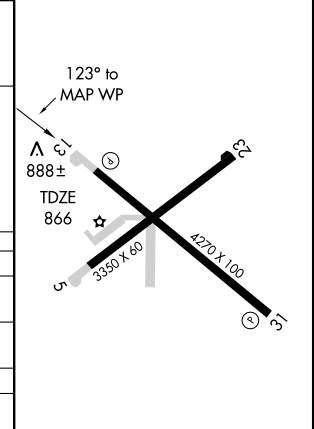
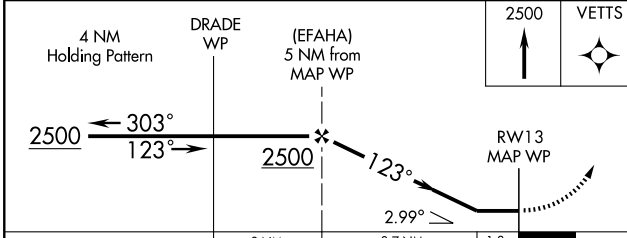
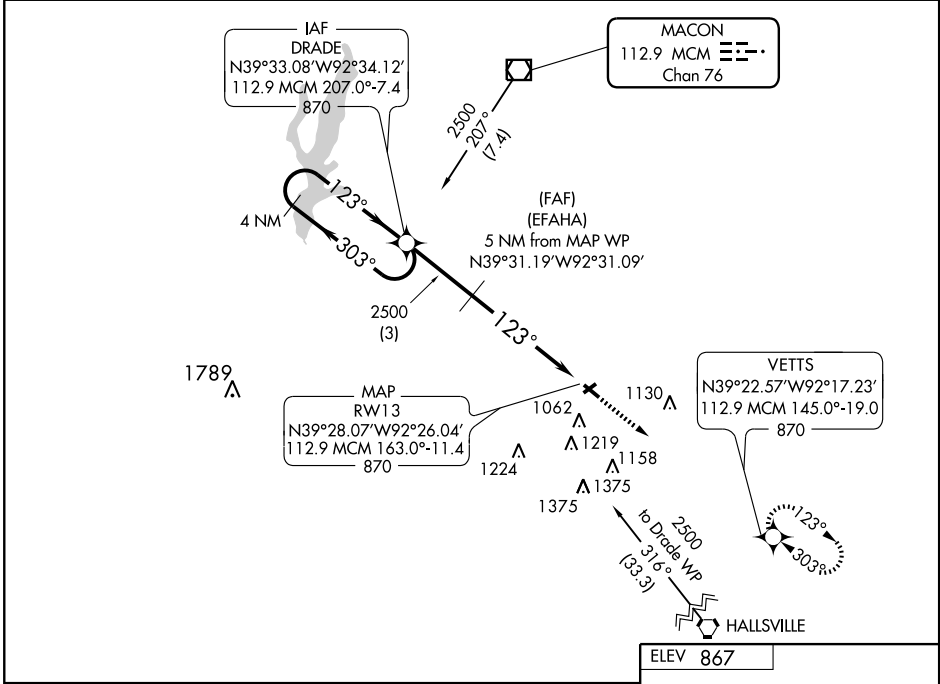
VOR/DME MCM <b>112.9</b> Chan <b>76</b>	APP CRS <b>123°</b>	Rwy Idg <b>4270</b> TDZE <b>866</b> Apt Elev <b>867</b>
---	------------------------	---

# VOR/DME RNAV or GPS RWY 13

MOBERLY/OMAR N. BRADLEY (M<sub>B</sub>Y)

**▲ NA** Obtain local altimeter setting on CTAF; when not available, use Columbia altimeter setting. MISSED APPROACH: Climb to 2500 direct VETTS WP and hold.

AWOS-3 <b>120.025</b>	COLUMBIA RADIO <b>122.1R</b>	UNICOM <b>122.7</b> (CTAF) <b>①</b>
--------------------------	---------------------------------	--



CATEGORY	A	B	C	D
S-13	1320-1	454 (500-1)	1320-1¼ 454 (500-1¼)	1320-1½ 454 (500-1½)
CIRCLING	1380-1	514 (600-1)	1380-1½ 514 (600-1½)	1500-2 634 (700-2)
COLUMBIA ALTIMETER SETTING MINIMUMS				
S-13	1500-1	634 (700-1)	1500-1¾ 634 (700-1¾)	1500-2 634 (700-2)
CIRCLING	1540-1	674 (700-1)	1540-2 674 (700-2)	1680-2¾ 814 (900-2¾)

REIL Rwy 13 and 31 **①**  
MIRL Rwy 5-23 and 13-31 **①**

NC-3, 19 NOV 2009 to 17 DEC 2009

NC-3, 19 NOV 2009 to 17 DEC 2009

MOBERLY, MISSOURI  
Amdt 1 09071

39°28'N-92°26'W

MOBERLY/OMAR N. BRADLEY (M<sub>B</sub>Y)

# VOR/DME RNAV or GPS RWY 13