

MCRAE, GEORGIA

AL-5980 (FAA)

NDB RWY 21

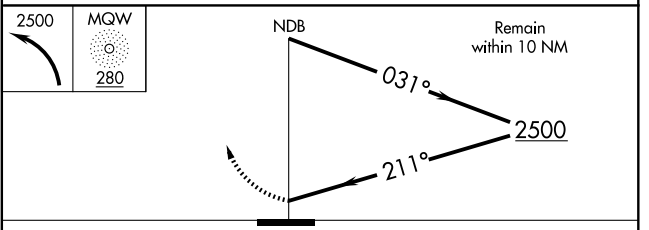
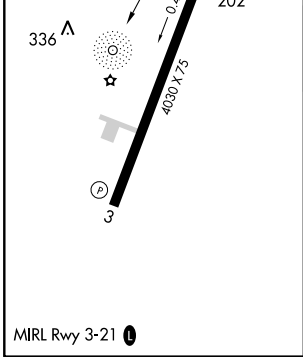
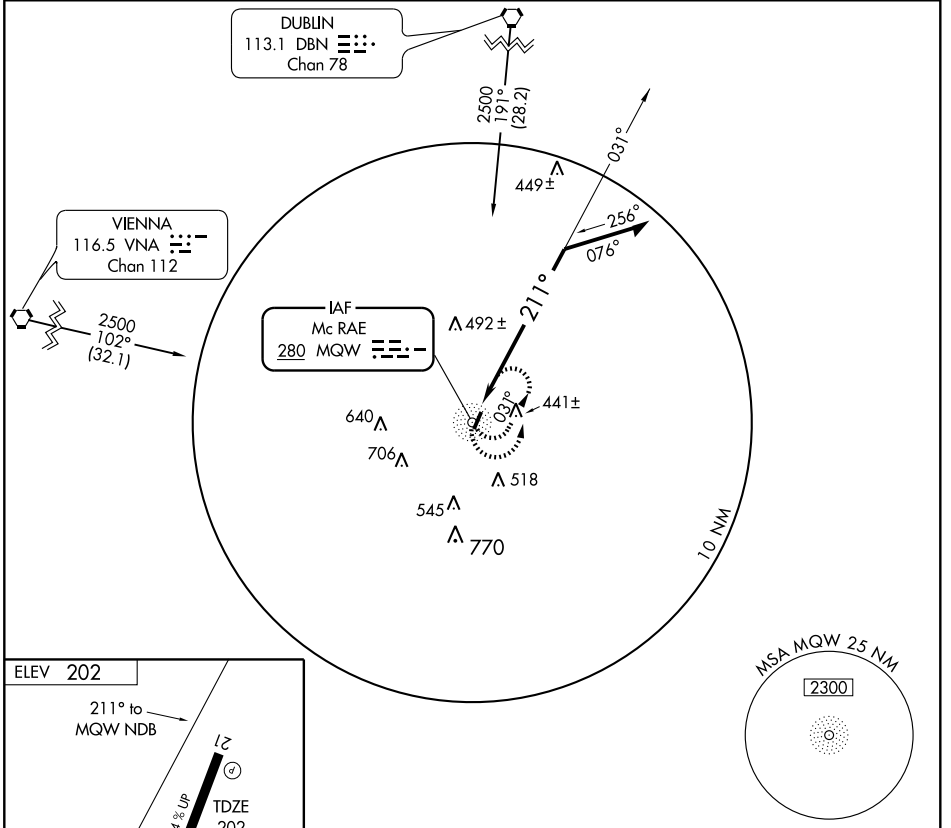
MCRAE/ TELFAIR-WHEELER (MQW)

NDB MQW	APP CRS	Rwy Idg	4030
280	211°	TDZE	202
		Apt Elev	202

▼ Visibility reduction by helicopters NA.
▲ NA Use Vidalia altimeter setting; when not received, use Alma altimeter setting.

MISSED APPROACH: Climbing left turn to 2500 in MQW NDB holding pattern, continue climb-in-hold to 2500.

VIDALIA AWOS-3 119.925	JACKSONVILLE CENTER 132.3 290.4	CTAF 122.9
----------------------------------	---	----------------------



CATEGORY	A	B	C	D
S-21	1000-1 798 (800-1)	1000-1¼ 798 (800-1¼)	1000-2¼ 798 (800-2¼)	1000-2½ 798 (800-2½)
CIRCLING	1000-1 798 (800-1)	1000-1¼ 798 (800-1¼)	1000-2¼ 798 (800-2¼)	1000-2½ 798 (800-2½)

MCRAE, GEORGIA
Amdt 9 09183

32°06'N - 82°53'W

MCRAE/ TELFAIR-WHEELER (MQW)

NDB RWY 21

SE-4, 11 MAR 2010 to 08 APR 2010

SE-4, 11 MAR 2010 to 08 APR 2010