

GALLIPOLIS, OHIO

AL-5981 (FAA)

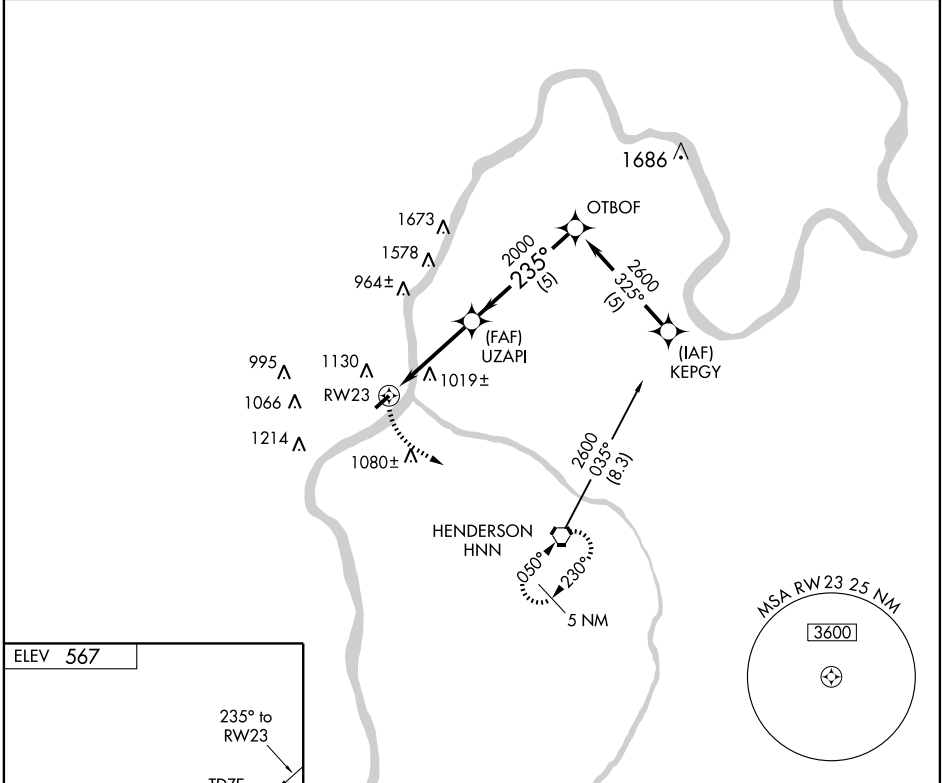
# GPS RWY 23

GALLIPOLIS / GALLIA-MEIGS RGNL (G.A.S)

APP CRS <b>235°</b>	Rwy ldg TDZE Apt Elev	<b>3998</b> <b>567</b> <b>567</b>
------------------------	-----------------------------	---

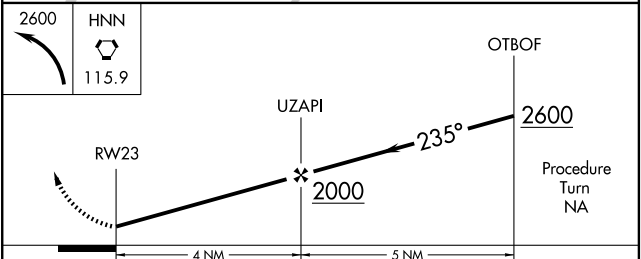
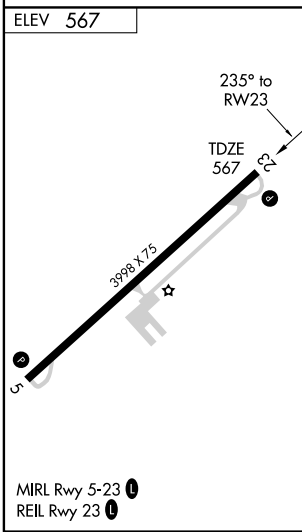
MISSED APPROACH: Climbing left turn to 2600 direct HNN VORTAC and hold.

<p>▼ ▲ NA</p>				
AWOS-3 <b>119.925</b>	POINT PLEASANT AWOS-3 <b>119.675</b>	HUNTINGTON APP CON <b>128.4 270.1</b>	CLNC DEL <b>124.55</b>	UNICOM <b>123.0 (CTAF) 0</b>



EC-2, 11 MAR 2010 to 08 APR 2010

EC-2, 11 MAR 2010 to 08 APR 2010



CATEGORY	A	B	C	D
S-23	1420-1 853 (900-1)	1420-1¼ 853 (900-1¼)	1420-2½ 853 (900-2½)	1420-2¾ 853 (900-2¾)
CIRCLING	1480-1¼	913 (1000-1¼)	1480-2¾ 913 (1000-2¾)	1480-3 913 (1000-3)

GALLIPOLIS, OHIO  
Orig 09239

38°50'N - 82°10'W

GALLIPOLIS / GALLIA-MEIGS RGNL (G.A.S)

# GPS RWY 23