

GALLIPOLIS, OHIO

AL-5981 (FAA)

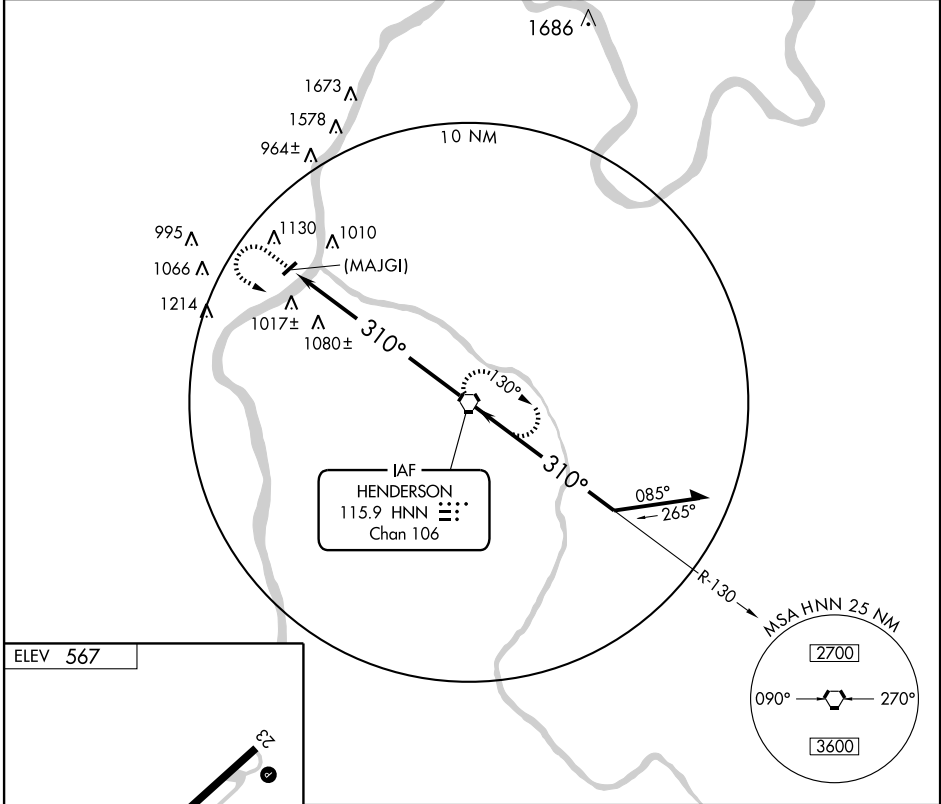
VORTAC HNN 115.9 Chan 106	APP CRS 310°	Rwy ldg TDZE N/A Apt Elev 567
---	------------------------	---

VOR or GPS-B
GALLIPOLIS / GALLIA-MEIGS RGNL (G.A.S)

▽ Use Point Pleasant, WV altimeter setting; if not received, use Huntington, WV altimeter setting and increase all MDAs 80 feet.

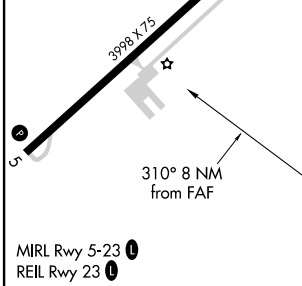
▲ NA MISSED APPROACH: Climb to 2700 then left turn direct HNN VORTAC and hold.

AWOS-3 119.925	POINT PLEASANT AWOS-3 119.675	HUNTINGTON APP CON 128.4 270.1	CLNC DEL 124.55	UNICOM 123.0 (CTAF) ①
--------------------------	---	--	---------------------------	--



EC-2, 11 MAR 2010 to 08 APR 2010

EC-2, 11 MAR 2010 to 08 APR 2010



ELEV 567	2700	HNN 115.9	VORTAC	Remain within 10 NM
MIRL Rwy 5-23 ①	(MAJGI) HNN ⑧	2700	130°	2700
REIL Rwy 23 ①	8 NM	2700	310°	2700

FAF to MAP 8 NM					CATEGORY	A	B	C	D		
Knots	60	90	120	150	180	1480-1¼	913 (1000-1¼)	1480-2¾	913 (1000-2¾)	1480-3	913 (1000-3)
Min:Sec	8:00	5:20	4:00	3:12	2:40						

GALLIPOLIS, OHIO
Amdt 1 09239

38°50'N - 82°10'W

GALLIPOLIS / GALLIA-MEIGS RGNL (G.A.S)
VOR or GPS-B