

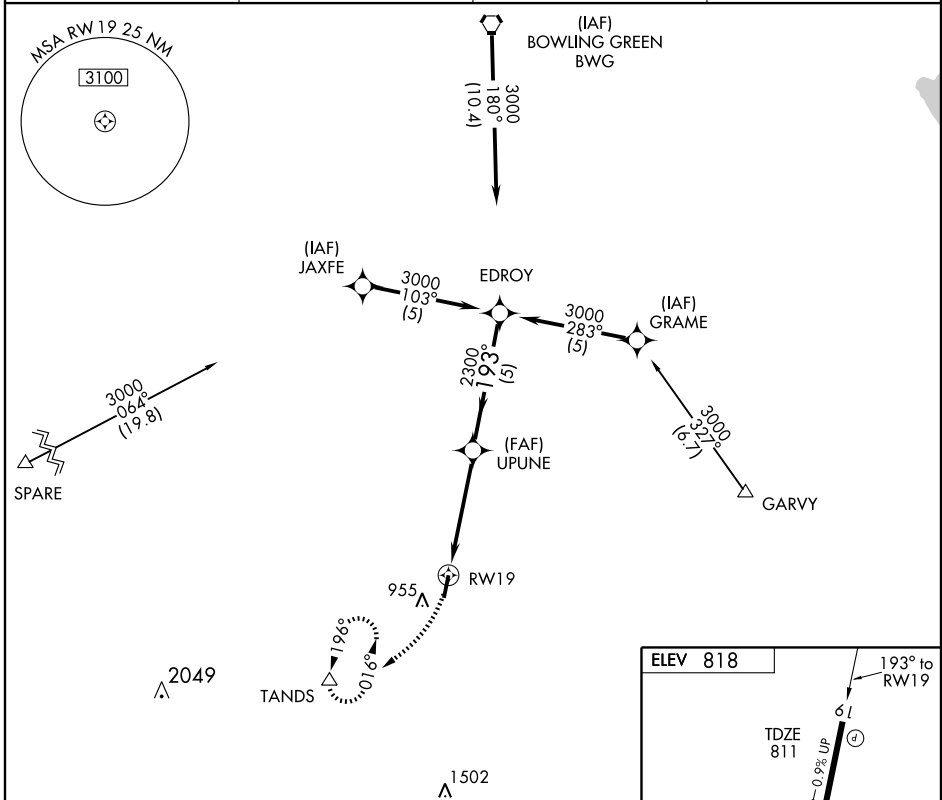
GPS RWY 19

PORTLAND MUNI (1M5)

APP CRS	Rwy Idg	5000
193°	TDZE	811
	Apt Elev	818

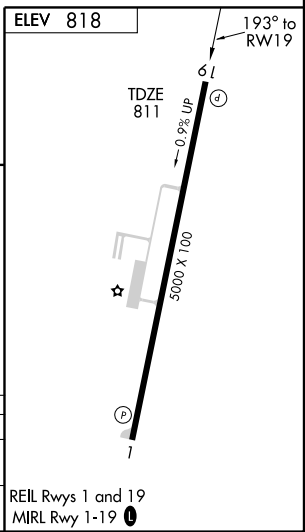
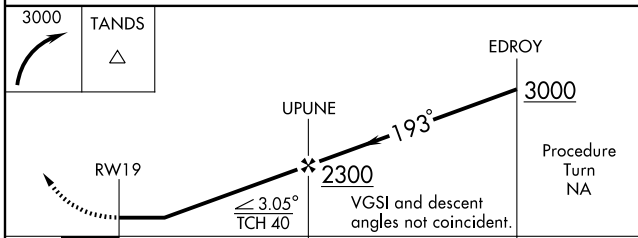
<p>▼</p> <p>▲ NA</p>	<p>MISSED APPROACH: Climbing right turn to 3000 direct TANDS WP and hold.</p>		
----------------------	---	--	--

<p>AWOS-3</p> <p>118.175</p>	<p>NASHVILLE APP CON</p> <p>119.35 385.55</p>	<p>GCO</p> <p>121.725</p>	<p>UNICOM</p> <p>122.8 (CTAF) 0</p>
-------------------------------------	--	----------------------------------	--



SE-1, 19 NOV 2009 to 17 DEC 2009

SE-1, 19 NOV 2009 to 17 DEC 2009



CATEGORY	A	B	C	D
S-19	1200-1	389 (400-1)		1200-1¼ 389 (400-1¼)
CIRCLING	1260-1 442 (500-1)	1280-1 462 (500-1)	1280-1½ 462 (500-1½)	1380-2 562 (600-2)

REIL Rwy 1 and 19
MIRL Rwy 1-19 0