

PORTLAND, TENNESSEE

AL-5989 (FAA)

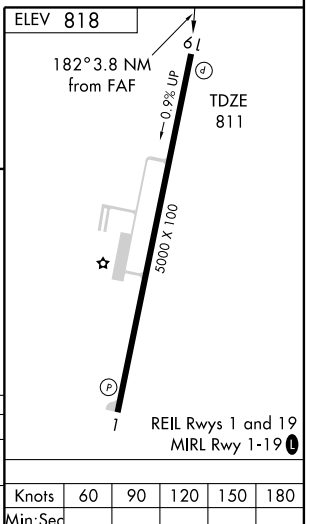
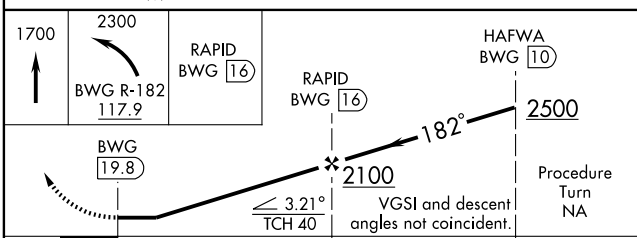
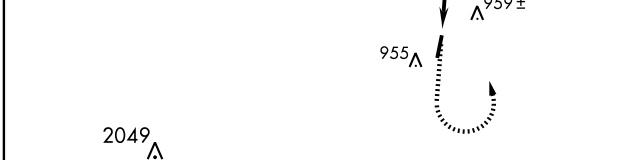
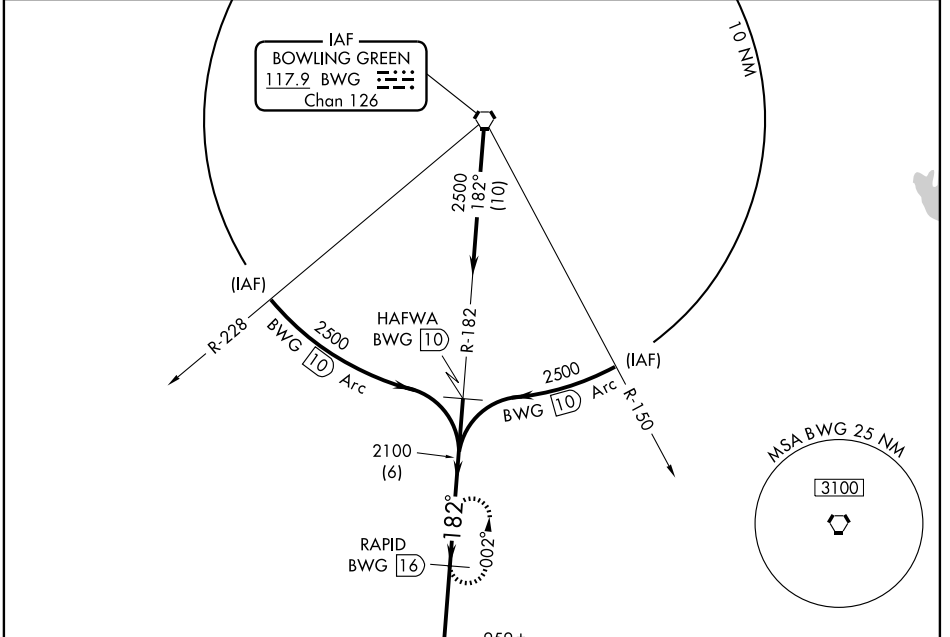
VOR/DME RWY 19

PORTLAND MUNI (1M5)

VORTAC BWG 117.9 Chan 126	APP CRS 182°	Rwy ldg TDZE Apt Elev	5000 811 818
--	------------------------	-----------------------------	---

▽ If local altimeter setting not received, use Bowling Green altimeter setting and increase all MDAs 80 feet.
△ NA MISSED APPROACH: Climb to 1700 then climbing left turn to 2300 via BWG R-182 to RAPID 16 DME and hold.

AWOS-3 118.175	NASHVILLE APP CON 119.35 385.55	GCO 121.725	UNICOM 122.8 (CTAF) ①
--------------------------	---	-----------------------	--



CATEGORY	A	B	C	D
S-19	1400-1	589 (600-1)	1400-1½ 589 (600-1½)	1400-1¾ 589 (600-1¾)
CIRCLING	1400-1	582 (600-1)	1400-1½ 582 (600-1½)	1400-2 582 (600-2)

PORTLAND, TENNESSEE
Amdt 3A 07354

36°36'N-86°29'W

PORTLAND MUNI (1M5) VOR/DME RWY 19

SE-1, 19 NOV 2009 to 17 DEC 2009

SE-1, 19 NOV 2009 to 17 DEC 2009