

OELWEIN, IOWA

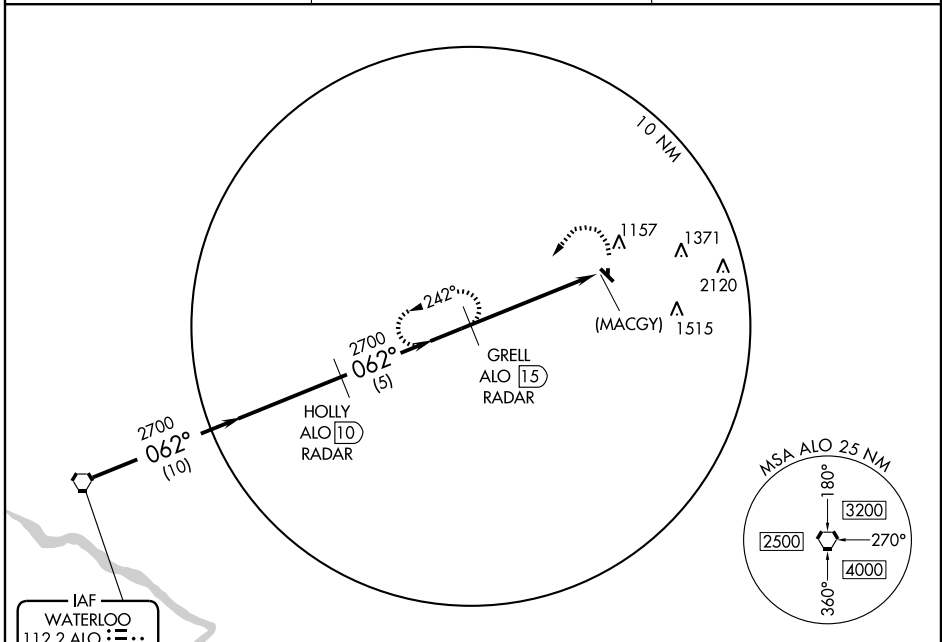
AL-6004 (FAA)

VORTAC ALO <b>112.2</b> Chan <b>59</b>	APP CRS <b>062°</b>	Rwy Idg TDZE Apt Elev <b>1076</b>	<b>N/A</b> <b>N/A</b>
--	------------------------	---	--------------------------

VOR or GPS-A  
OELWEIN MUNI (OLZ)

▼ Radar not available when Waterloo Tower not in operation. MISSED APPROACH: Climbing left turn to 2700 via ALO R-062 to GRELL 15 DME/RADAR and hold.

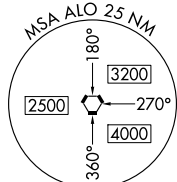
AWOS-3 <b>119.675</b>	WATERLOO APP CON * <b>118.9 257.8</b>	UNICOM <b>122.8 (CTAF) 0</b>
--------------------------	--	---------------------------------



NC-3, 11 MAR 2010 to 08 APR 2010

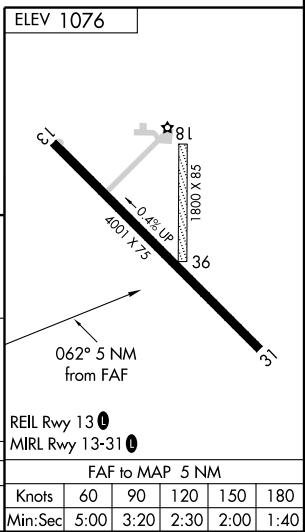
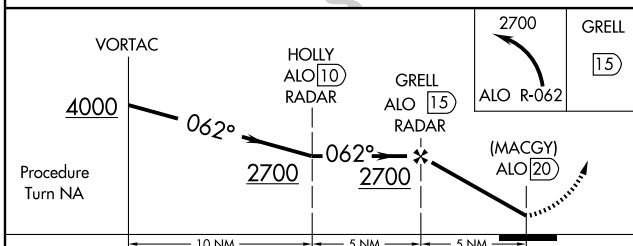
NC-3, 11 MAR 2010 to 08 APR 2010

IAF  
WATERLOO  
112.2 ALO  
Chan 59



△  
2309

DME OR RADAR REQUIRED



CATEGORY	A	B	C	D	FAF to MAP 5 NM					
	1600-1	524 (600-1)	1640-1½ 564 (600-1½)	1640-2 564 (600-2)	Knots	60	90	120	150	180
CIRCLING					Min:Sec	5:00	3:20	2:30	2:00	1:40

OELWEIN, IOWA  
Amdt 3A 07186

42°41'N-91°58'W

OELWEIN MUNI (OLZ)  
VOR or GPS-A