

OELWEIN, IOWA

AL-6004 (FAA)

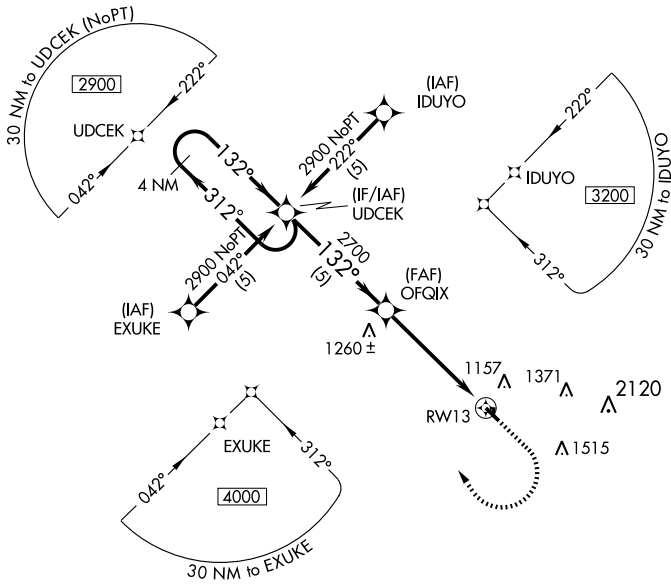
# RNAV (GPS) RWY 13

OELWEIN MUNI (OLZ)

APP CRS	Rwy Idg	<b>4001</b>
<b>132°</b>	TDZE	<b>1076</b>
	Apt Elev	<b>1076</b>

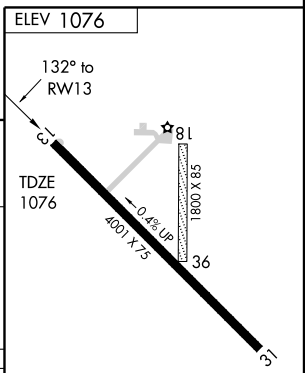
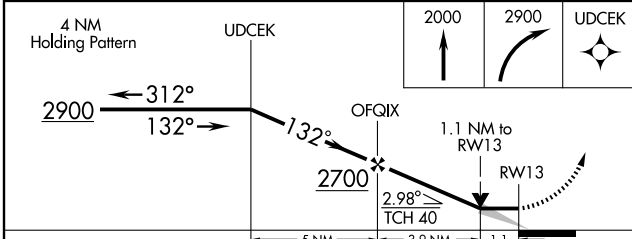
GPS or RNP-0.3 required. DME/DME RNP-0.3 NA. MISSED APPROACH: Climb to 2000, then climbing right turn to 2900 direct UDCEK WP and hold.

AWOS-3 <b>119.675</b>	WATERLOO APP CON* <b>118.9 257.8</b>	UNICOM <b>122.8 (CTAF)</b>
--------------------------	---	-------------------------------



NC-3, 11 MAR 2010 to 08 APR 2010

NC-3, 11 MAR 2010 to 08 APR 2010



REIL Rwy 13 **0**  
MIRL Rwy 13-31 **0**

OELWEIN, IOWA  
Orig 07186

42°41'N-91°58'W

# RNAV (GPS) RWY 13