

VORTAC VXV 116.4 Chan 111	APP CRS 102°	Rwy Idg TDZE Apt Elev	5506 1014 1014
---	------------------------	-----------------------------	---

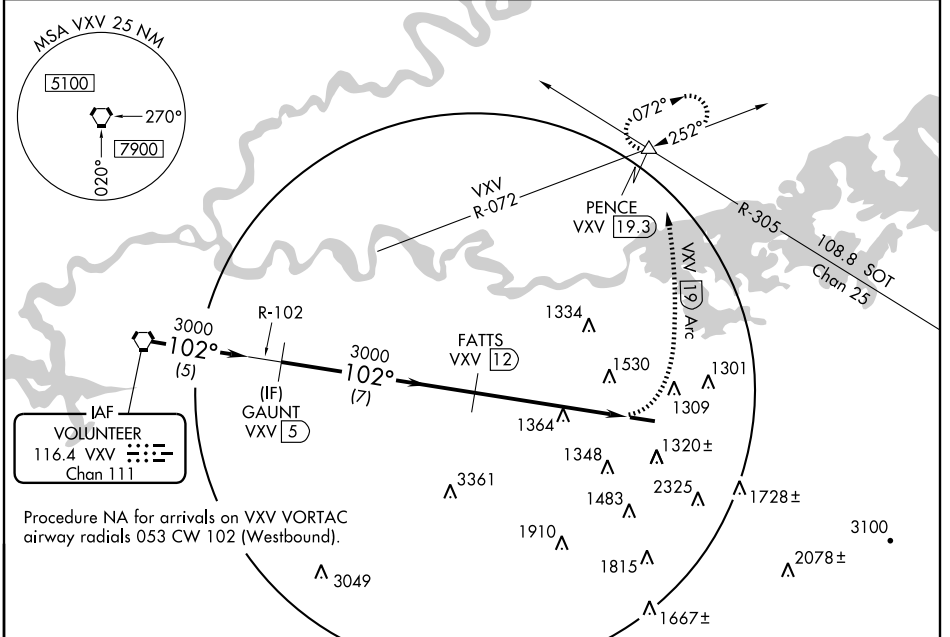
VOR/DME RWY 10

SEVIERVILLE/GATLINBURG-PIGEON FORGE (GKT)

▼ When local altimeter setting not received, use Knoxville altimeter setting and increase all MDA 60 feet and Cats. A, C and D visibilities ¼ mile.
▲ NA Visibility reduction by helicopters NA.

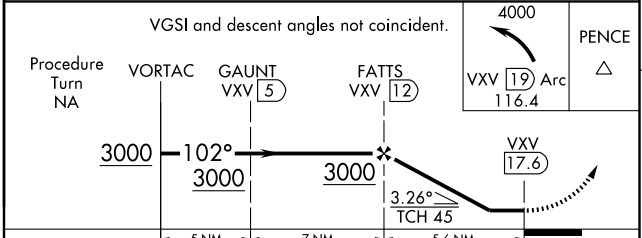
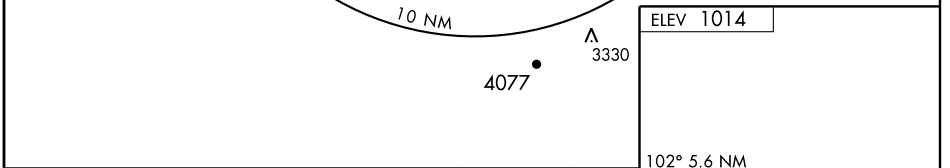
MISSED APPROACH: Climbing left turn to 4000 via VXV 19 DME Arc to PENCE Int and hold.

AWOS-3 126.875	KNOXVILLE APP CON 132.8 360.8	UNICOM 123.0 (CTAF) 0
--------------------------	---	--



SE-1, 11 MAR 2010 to 08 APR 2010

SE-1, 11 MAR 2010 to 08 APR 2010



CATEGORY	A	B	C	D
S-10	1840-1 826 (900-1)	1840-1¼ 826 (900-1¼)	1840-2½ 826 (900-2½)	1840-2¾ 826 (900-2¾)
CIRCLING	1840-1 826 (900-1)	1880-1¼ 866 (900-1¼)	1880-2½ 866 (900-2½)	1880-2¾ 866 (900-2¾)