

RNAV (GPS) RWY 8

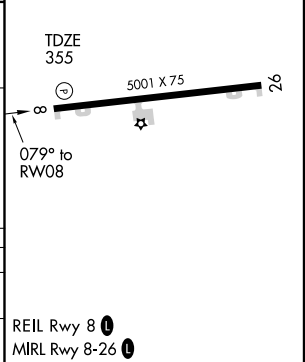
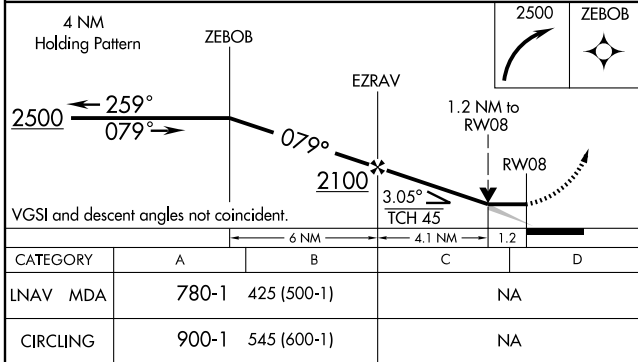
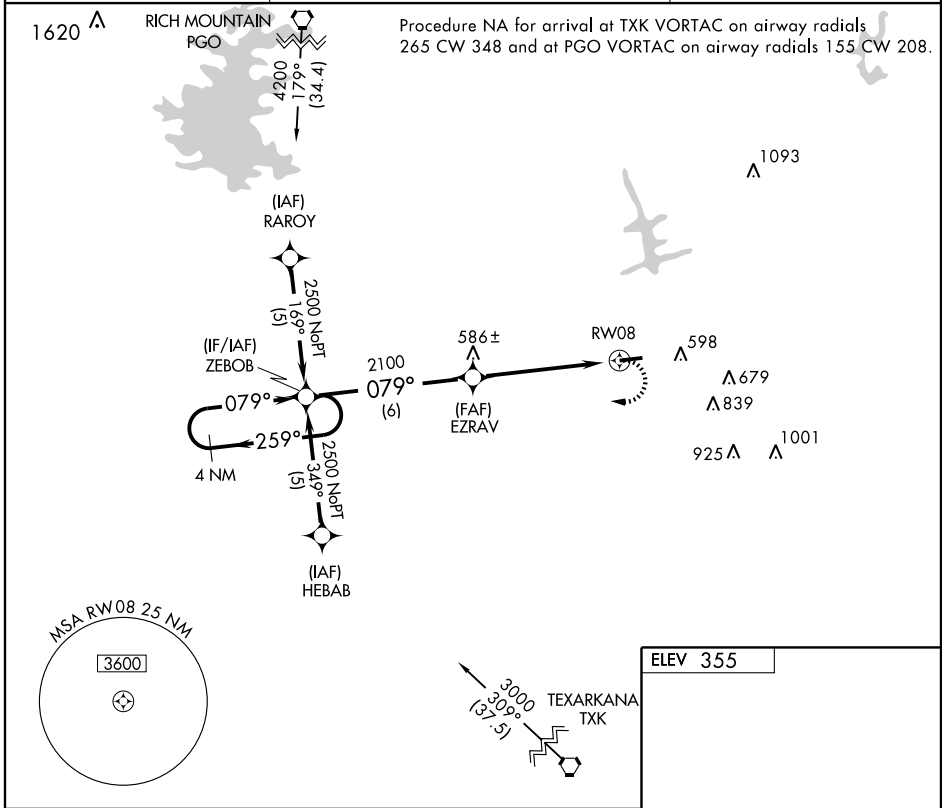
DE QUEEN/ J. LYNN HELMS SEVIER COUNTY (DEQ)

APP CRS	Rwy Idg	5001
079°	TDZE	355
	Apt Elev	355

▼ VDP NA with Texarkana altimeter setting. GPS or RNP-0.3 required. DME/DME RNP-0.3 NA. If local altimeter setting not received, use Texarkana altimeter setting and increase all MDAs 100 feet.

MISSED APPROACH: Climbing right turn to 2500 direct ZEBOB and hold.

ASOS 134.075	FORT WORTH CENTER 123.925 269.475	UNICOM 122.8 (CTAF) 1
------------------------	---	--



CATEGORY	A	B	C	D
LNVA MDA	780-1	425 (500-1)		NA
CIRCLING	900-1	545 (600-1)		NA

REIL Rwy 8 **1**
 MIRL Rwy 8-26 **1**

SC-1, 11 MAR 2010 to 08 APR 2010

SC-1, 11 MAR 2010 to 08 APR 2010