

VORTAC PXR <b>115.6</b> Chan <b>103</b>	APP CRS <b>330°</b>	Rwy ldg TDZE Apt Elev <b>N/A</b> <b>N/A</b> <b>1180</b>
---	------------------------	--

# VOR or GPS-A

CHANDLER/STELLAR AIRPARK (P19)

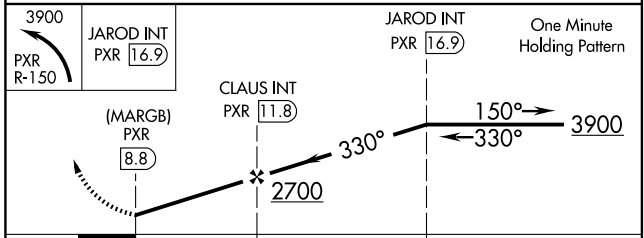
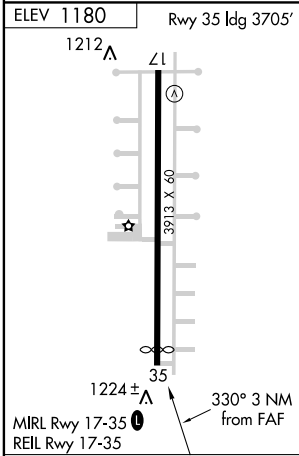
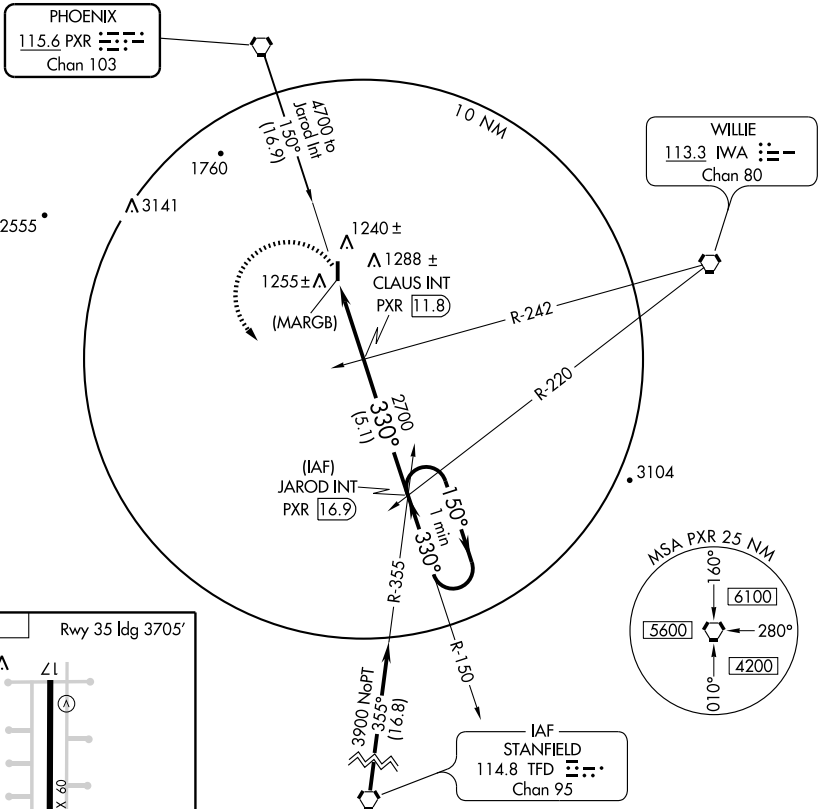
**NA** Use Phoenix Sky Harbor Intl altimeter setting. Procedure not authorized at night.

**MISSED APPROACH:** Climbing left turn to 3900 via PXR R-150 to JAROD Int/PXR 16.9 DME and hold.

PHOENIX APP CON <b>123.7 363.0</b>	CTAF <b>122.9</b>
---------------------------------------	----------------------

SW-4, 19 NOV 2009 to 17 DEC 2009

SW-4, 19 NOV 2009 to 17 DEC 2009



FAF to MAP 3 NM					
Knots	60	90	120	150	180
Min:Sec	3:00	2:00	1:30	1:12	1:00
CATEGORY	A	B	C	D	
CIRCLING	1600-1 420 (500-1)	1640-1 460 (500-1)	1640-1½ 460 (500-1½)	NA	