

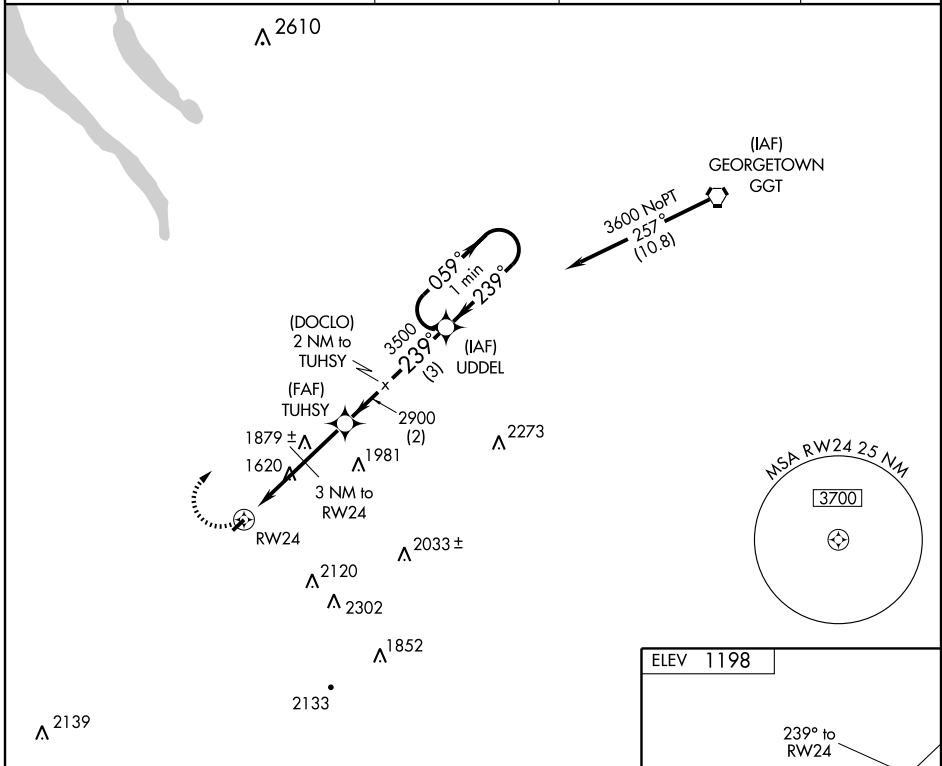
GPS RWY 24

CORTLAND COUNTY-CHASE FIELD (NØ3)

APP CRS	Rwy Idg	3400
239°	TDZE	1192
	Apt Elev	1198

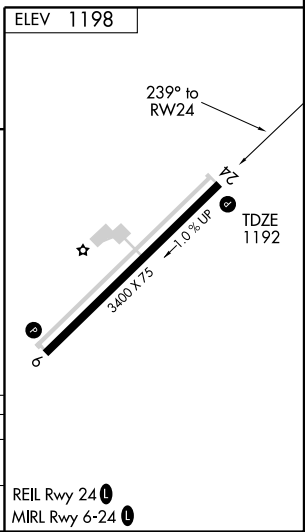
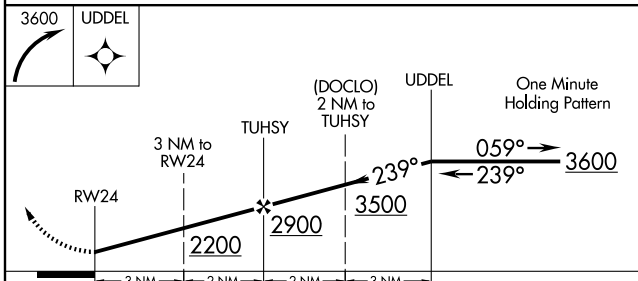
MISSED APPROACH: Climbing right turn to 3600 direct UDDEL WP and hold.

AWOS-3 132.225	BINGHAMTON APP CON * 118.6 257.625	ELMIRA APP CON * 124.3 257.8 (W)	SYRACUSE APP CON 126.125 269.125 (N-NE)	UNICOM 122.8 (CTAF)
--------------------------	--	--	---	-------------------------------



NE-2, 11 MAR 2010 to 08 APR 2010

NE-2, 11 MAR 2010 to 08 APR 2010



CATEGORY	A	B	C	D
S-24	1880-1	688 (700-1)	1880-2 688 (700-2)	NA
CIRCLING	1940-1 742 (800-1)	1940-1¼ 742 (800-1¼)	1980-2¼ 782 (800-2¼)	NA

GPS RWY 24