

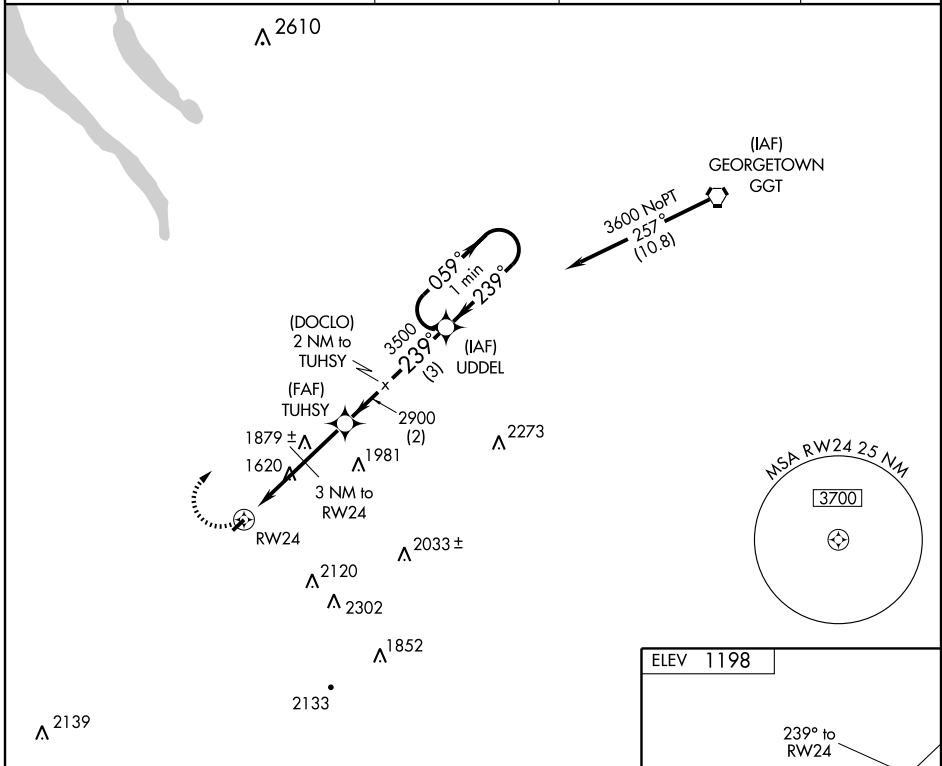
GPS RWY 24

CORTLAND COUNTY-CHASE FIELD (NØ3)

APP CRS	Rwy Idg	3400
239°	TDZE	1192
	Apt Elev	1198

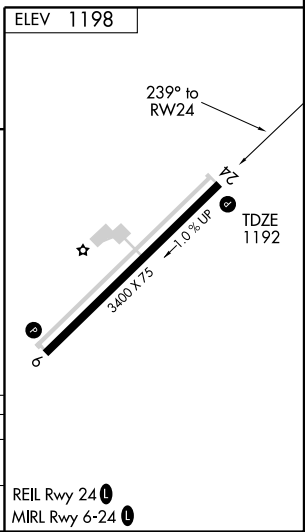
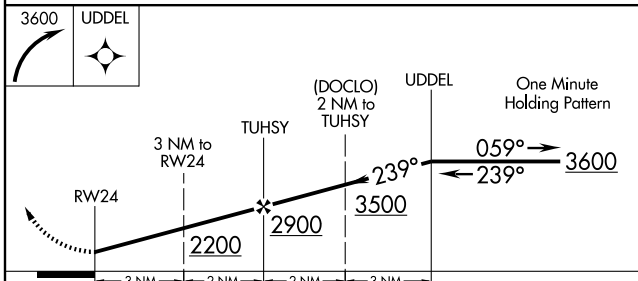
MISSED APPROACH: Climbing right turn to 3600 direct UDDEL WP and hold.

<p>▼</p> <p>▲ NA</p>	<p>AWOS-3</p> <p>132.225</p>	<p>BINGHAMTON APP CON *</p> <p>118.6 257.625</p>	<p>ELMIRA APP CON *</p> <p>124.3 257.8 (W)</p>	<p>SYRACUSE APP CON</p> <p>126.125 269.125 (N-NE)</p>	<p>UNICOM</p> <p>122.8 (CTAF) 0</p>
----------------------	-------------------------------------	---	---	--	--



NE-2, 19 NOV 2009 to 17 DEC 2009

NE-2, 19 NOV 2009 to 17 DEC 2009



	3 NM	2 NM	2 NM	3 NM
CATEGORY	A	B	C	D
S-24	1880-1	688 (700-1)	1880-2 688 (700-2)	NA
CIRCLING	1940-1 742 (800-1)	1940-1¼ 742 (800-1¼)	1980-2¼ 782 (800-2¼)	NA

GPS RWY 24