

VOR or GPS-A

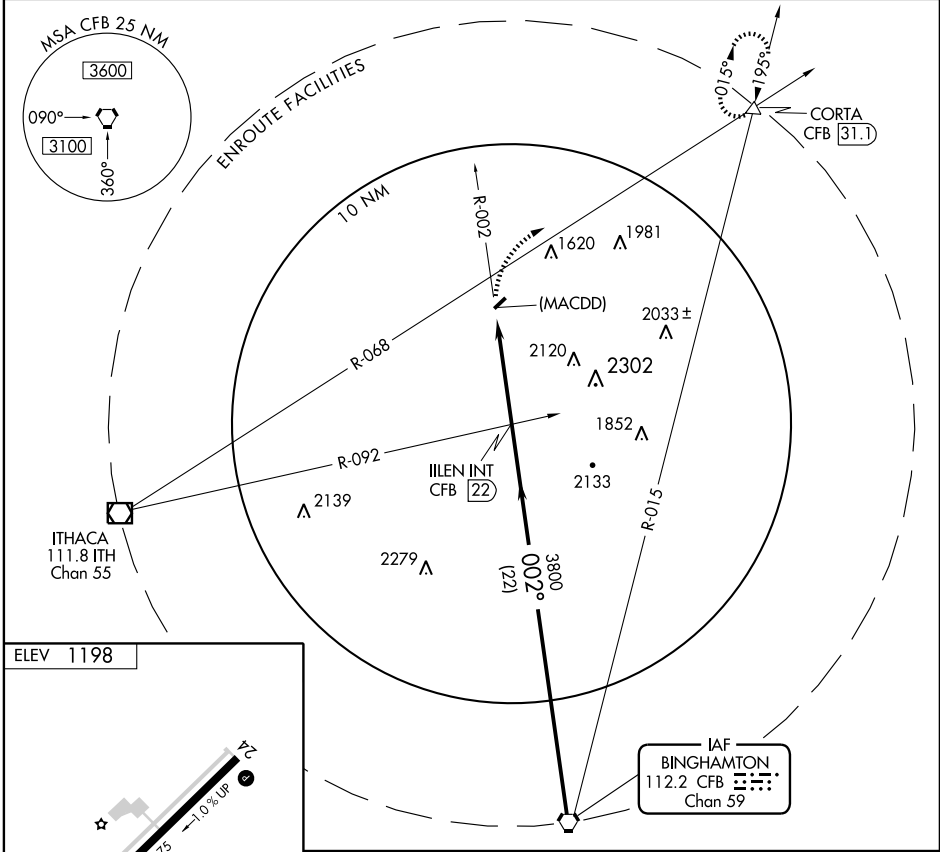
CORTLAND COUNTY-CHASE FIELD (N03)

VORTAC CFB 112.2 Chan 59	APP CRS 002°	Rwy Idg TDZE Apt Elev N/A N/A 1198
--	------------------------	--

⚠ If local altimeter setting not received, procedure not authorized.

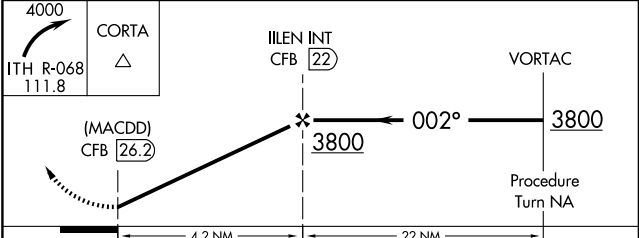
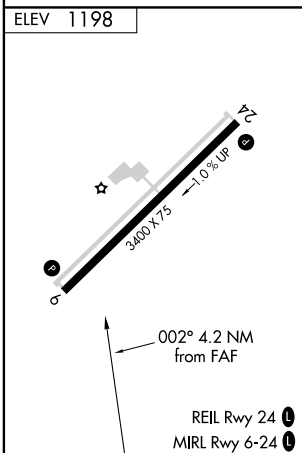
MISSED APPROACH: Climbing right turn to 4000 via ITH VOR/DME R-068 to CORTA Int/CFB 31.1 DME and hold.

AWOS-3 132.225	BINGHAMTON APP CON * 118.6 257.625	ELMIRA APP CON * 124.3 257.8 (W)	SYRACUSE APP CON 126.125 269.125 (N-NE)	UNICOM 122.8 (CTAF)
--------------------------	--	--	---	-------------------------------



NE-2, 11 MAR 2010 to 08 APR 2010

NE-2, 11 MAR 2010 to 08 APR 2010



FAF to MAP 4.2 NM					
Knots	60	90	120	150	180
Min:Sec	4:12	2:48	2:06	1:41	1:24
CATEGORY	A	B	C	D	
CIRCLING	2280-1¼ 1082 (1100-1¼)	2280-1½ 1082 (1100-1½)	2280-3 1082 (1100-3)	NA	