

ILS or LOC RWY 17R

DALLAS-FORT WORTH INTL (DFW)

LOC/DME I-JHZ 111.35 Chan 50 (Y)	APP CRS 174°	Rwy 17R Idg 13401 TDZE 567 Apt Elev 607	Rwy 17C Idg 13401 TDZE 562 Apt Elev 607
--	------------------------	--	--

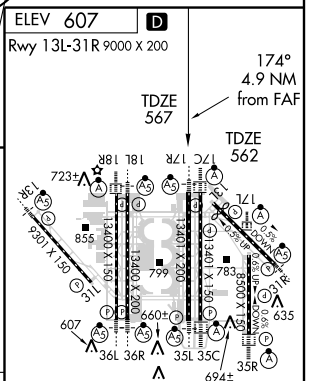
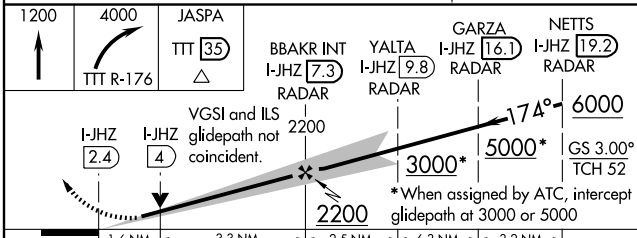
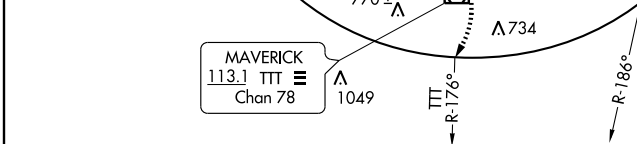
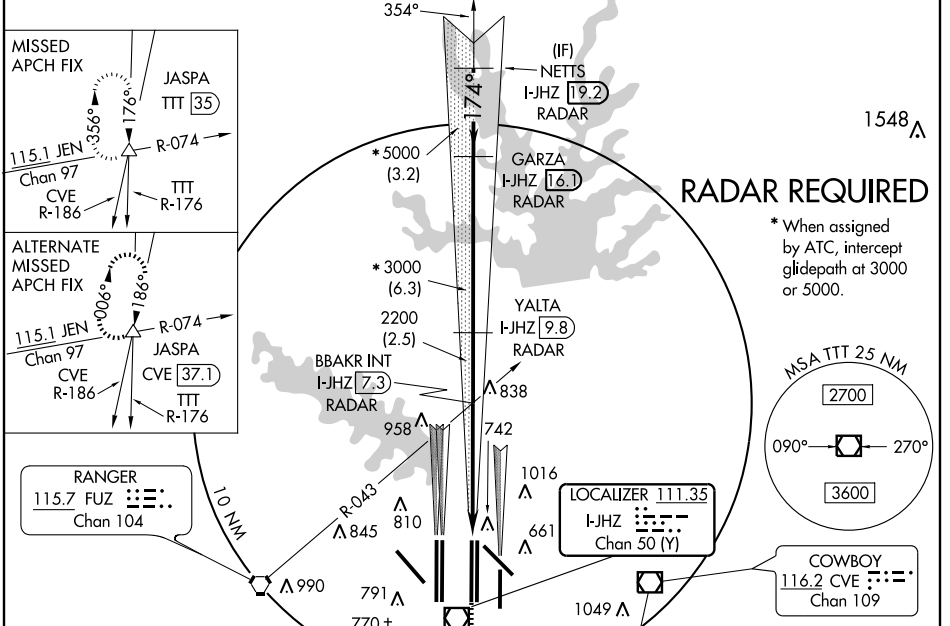
▼ Simultaneous approach authorized with Rwy 17L and 18L/R. Inoperative table does not apply to sidestep Rwy 17C. DME or RADAR required. LOC procedure NA during simultaneous operations.

Rwy 17R MALS R (A5)

Rwy 17C ALSF-2 (A)

MISSED APPROACH: Climb to 1200 then climbing right turn to 4000 via TTT R-176 to JASPA Int/TTT 35 DME and hold.

ATIS ARR 123.775 DEP 135.925	REGIONAL APP CON 127.075	DFW TOWER 126.55 127.5 EAST 124.15 134.9 WEST	GND CON 121.65 121.8 EAST 121.85 WEST	CLNC DEL 128.25
--	------------------------------------	---	---	---------------------------



CATEGORY	A	B	C	D
S-ILS 17R	767/18 200 (200-½)			
S-LOC 17R	1140/24	573 (600-½)	1140/50 573 (600-1)	1140/60 573 (600-1½)
SIDESTEP 17C	1140-1	578 (600-1)	1140-1½ 578 (600-1½)	1140-2 578 (600-2)

HIRL all Rwys					
REIL Rwys 13L and 31L					
TDZ/CL all Rwys except 13L and 31L					
FAF to MAP 4.9 NM					
Knots	60	90	120	150	180
Min:Sec	4:54	3:16	2:27	1:58	1:38

SC-2, 19 NOV 2009 to 17 DEC 2009

SC-2, 19 NOV 2009 to 17 DEC 2009