

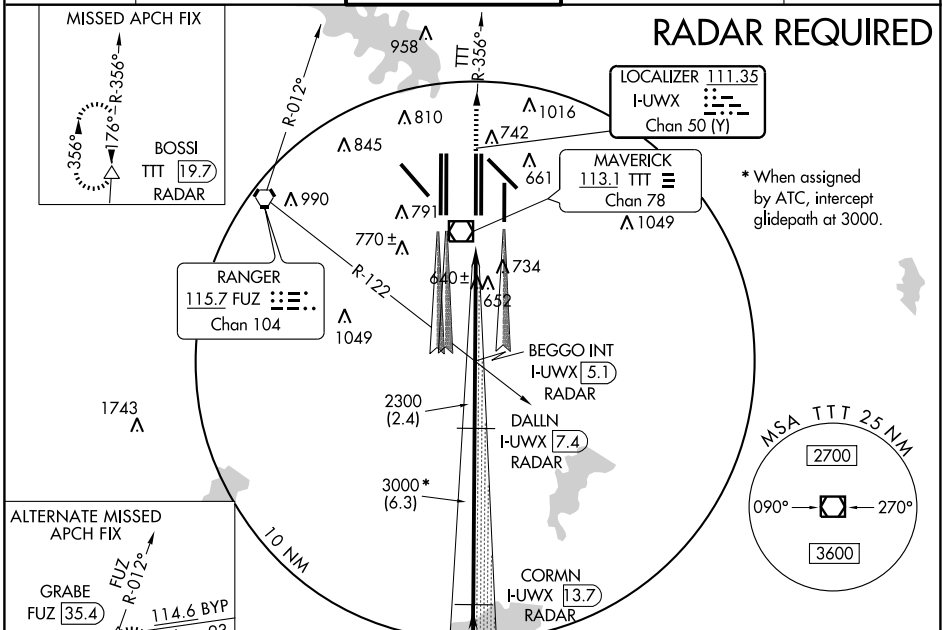
LOC/DME I-UWX 111.35 Chan 50 (Y)	APP CRS 354°	Rwy 35L Idg 13401 TDZE 564 Apt Elev 607	Rwy 35C Idg 13401 TDZE 563 Apt Elev 607
--	------------------------	--	--

ILS or LOC RWY 35L

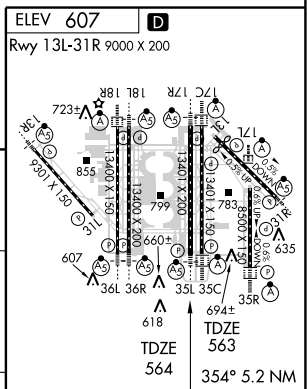
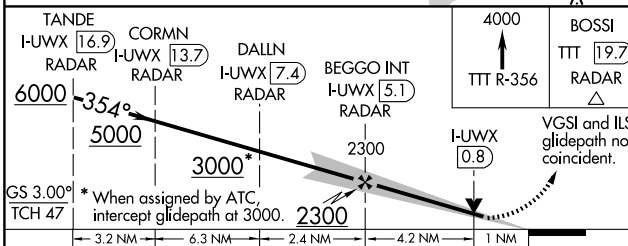
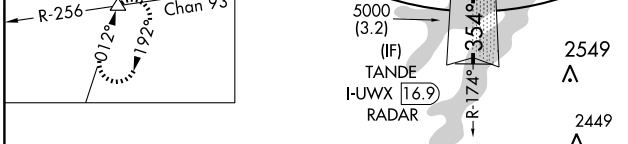
DALLAS-FORT WORTH INTL (DFW)

<p>Simultaneous approach authorized with Rwy 35R, Rwy 36L/R. DME or Radar required. LOC procedure NA during simultaneous operations. Inoperative table does not apply to Sidestep 35C.</p>	Rwy 35L MALS R	Rwy 35C ALSF-2	MISSED APPROACH: Climb to 4000 via TTT VOR/DME R-356 to BOSSI/TTT 19.7 DME/RADAR and hold.
	(AS)	(A)	

ATIS ARR 123.775 DEP 135.925	REGIONAL APP CON 127.075	DFW TOWER 126.55 127.5 EAST 124.15 134.9 WEST	GND CON 121.65 121.8 EAST 121.85 WEST	CLNC DEL 128.25
---	---------------------------------	--	--	------------------------



* When assigned by ATC, intercept glidepath at 3000.



CATEGORY	A	B	C	D
S-ILS 35L	764/18 200 (200-½)			
S-LOC 35L	940/24 376 (400-½)		940/40 376 (400-¾)	
SIDESTEP 35C	960-1 397 (400-1)	960-1½ 397 (400-½)	960-2 397 (400-2)	

HIRL all Rwys	60	90	120	150	180
REIL Rwys 13L and 31L	5:12	3:28	2:36	2:05	1:44
TDZ/CL all Rwys except 13L, 17C and 31L	FAF to MAP 5.2 NM				

SC-2, 11 MAR 2010 to 08 APR 2010

SC-2, 11 MAR 2010 to 08 APR 2010