

# RNAV (GPS) RWY 17C

DALLAS-FORT WORTH INTL (DFW)

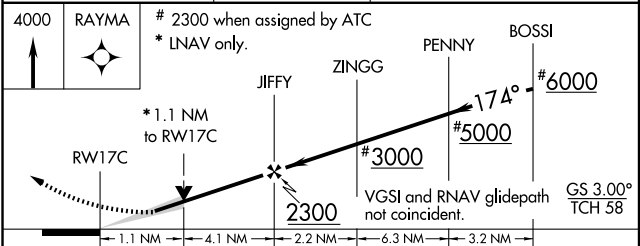
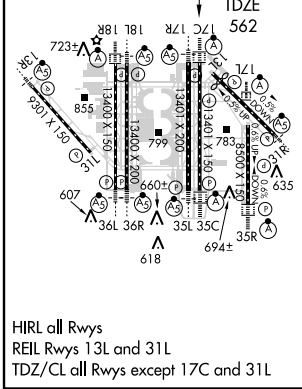
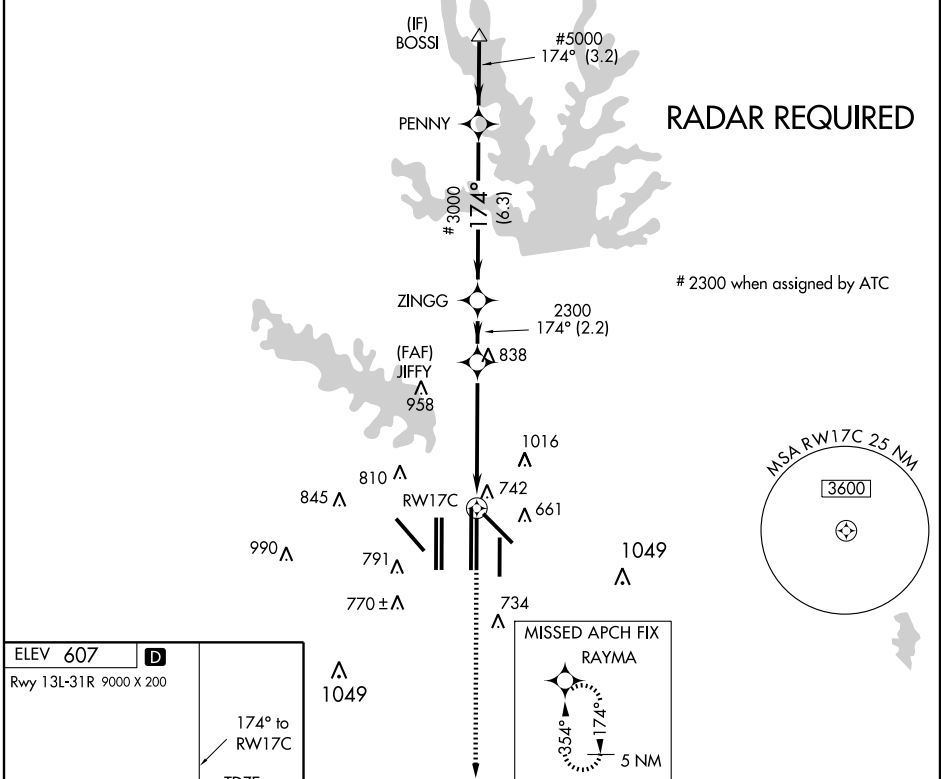
WAAS CH <b>97324</b> <b>W17D</b>	APP CRS <b>174°</b>	Rwy Idg <b>13401</b> TDZE <b>562</b> Apt Elev <b>607</b>
--	------------------------	--

**▼** For uncompensated Baro-VNAV systems, LNAV/VNAV NA below -16°C (4°F) or above 47°C (116°F). DME/DME RNP-0.3 NA.

ALSF-2

MISSED APPROACH: Climb to 4000 direct RAYMA and hold.

ARR <b>123.775</b>	ATIS <b>135.925</b>	DEP <b>135.925</b>	REGIONAL APP CON <b>127.075</b>	DFW TOWER <b>126.55 127.5 EAST</b> <b>124.15 134.9 WEST</b>	GND CON <b>121.65 121.8 EAST</b> <b>121.85 WEST</b>	CLNC DEL <b>128.25</b>
-----------------------	------------------------	-----------------------	------------------------------------	---	---	---------------------------



CATEGORY	A	B	C	D
LPV DA	812/24		250 (300-½)	
LNAV/VNAV DA	1068/60		506 (500-¼)	
LNAV MDA	1000/24	438 (400-½)	1000/40 438 (400-¾)	1000/50 438 (400-1)

SC-2, 19 NOV 2009 to 17 DEC 2009

SC-2, 19 NOV 2009 to 17 DEC 2009