

# RNAV (GPS) RWY 17L

DALLAS-FORT WORTH INTL (DFW)

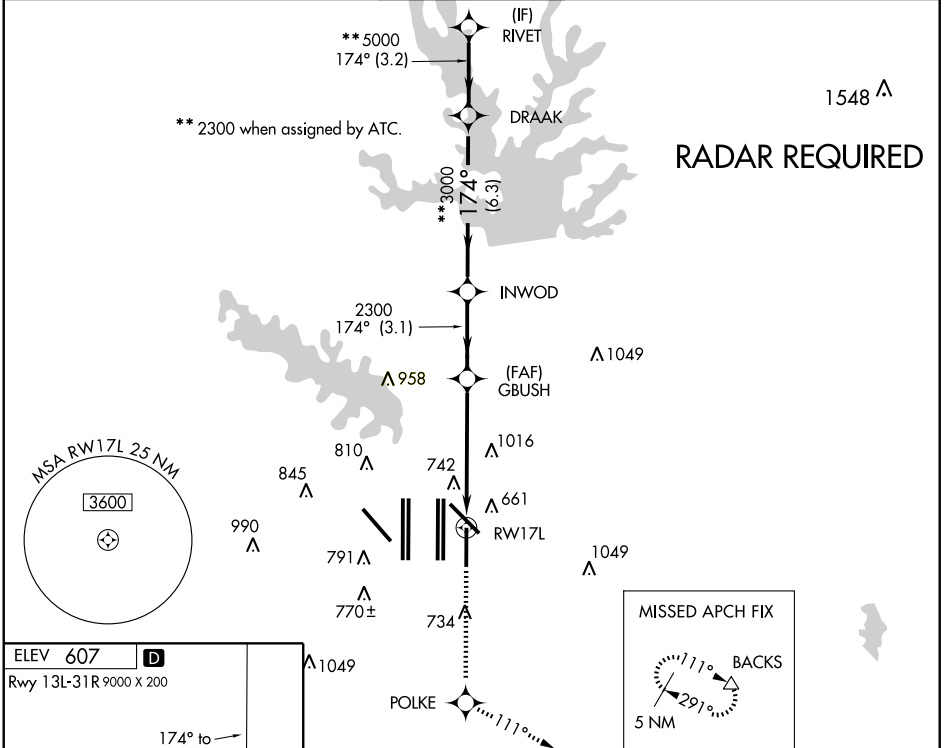
WAAS CH <b>40008</b> <b>W17B</b>	APP CRS <b>174°</b>	Rwy Idg <b>8500</b> TDZE <b>545</b> Apt Elev <b>607</b>
--	------------------------	---

⚠ For uncompensated Baro-VNAV systems, LNAV/VNAV NA below -16°C (4°F) or above 47°C (116°F). DME/DME RNP-0.3 NA. For inoperative ALSF, increase LPV all Cats visibility to 1½.

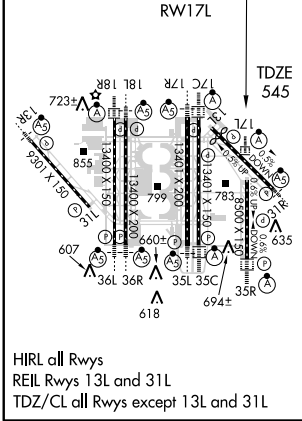
ALSF-2

MISSED APPROACH: Climb to 5000 direct POLKE and via 111° track to BACKS and hold.

ARR ATIS <b>123.775 135.925</b>	DEP <b>135.925</b>	REGIONAL APP CON <b>119.4</b>	DFW TOWER <b>126.55 127.5 EAST</b> <b>124.15 134.9 WEST</b>	GND CON <b>121.65 121.8 EAST</b> <b>121.85 WEST</b>	CLNC DEL <b>128.25</b>
------------------------------------	-----------------------	----------------------------------	---	---	---------------------------



ELEV <b>607</b>	<b>D</b>
Rwy 13L-31R 9000 X 200	
174° to RWY 17L	
TDZE <b>545</b>	



5000	POLKE	TRK 111°	BACKS	VGSI and RNAV glidepath not coincident.			
				DRAAK	RIVET		
				INWOD		174° 5000	
				GBUSH		** 3000	** 5000
				RWY 17L		** 2300 when assigned by ATC.	GS 3.00° TCH 56
CATEGORY	A	B	C	D			
LPV DA		984/50	439 (400-1)				
LNAV/VNAV DA		1042/60	497 (500-1½)				
LNAV MDA	1240/24	695 (700-½)	1240-1½ 695 (700-1½)	1240-1¾ 695 (700-¾)			

SC-2, 19 NOV 2009 to 17 DEC 2009

SC-2, 19 NOV 2009 to 17 DEC 2009