

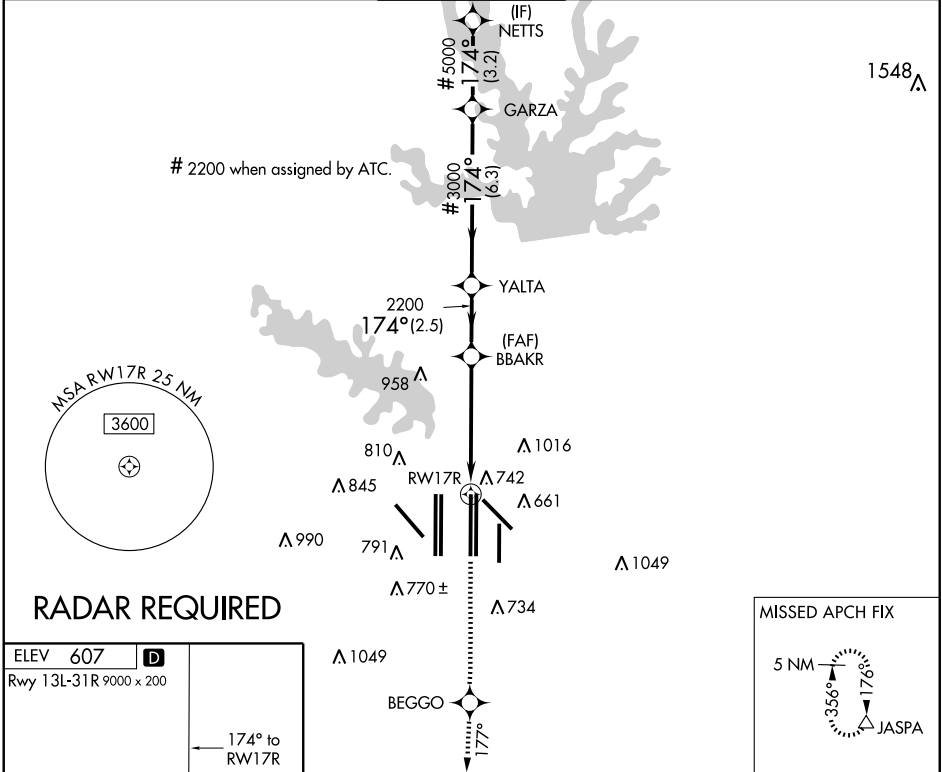
RNAV (GPS) RWY 17R

DALLAS-FORT WORTH INTL (DFW)

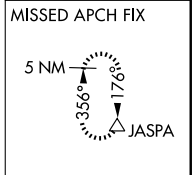
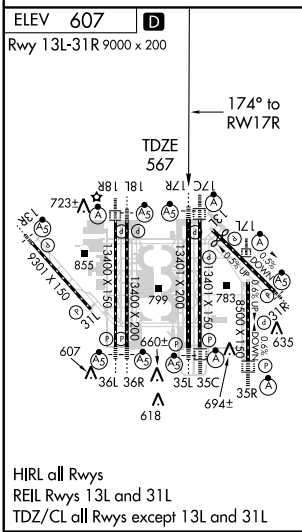
WAAS CH 53505 W17A	APP CRS 174°	Rwy Idg TDZE 567 Apt Elev 607	13401
--	------------------------	---	--------------

▼ For uncompensated Baro-VNAV systems, LNAV/VNAV NA below -16°C (4°F) or above 47°C (116°F). DME/DME RNP-0.3 NA.	MALSR	MISSED APPROACH: Climb to 4000 direct BEGGO then via 177° track to JASPA and hold.

ARR	ATIS	DEP	REGIONAL APP CON	DFW TOWER	GND CON	CLNC DEL
123.775	135.925		127.075	126.55 127.5 EAST 124.15 134.9 WEST	121.65 121.8 EAST 121.85 WEST	128.25



RADAR REQUIRED



4000	BEGGO	177° TRK	JASPA	# 2200 when assigned by ATC.	NETTS
VGSi and RNAV glidepath not coincident.					
*LNAV only					
RW17R					
YALTA					
BBAKR					
GARZA					
174°					
# 6000					
# 5000					
# 3000					
2200					
GS 3.00° TCH 52					
1.2 3.7 NM 2.5 NM 6.3 NM 3.2 NM					
CATEGORY	A		B		D
LPV DA	817/24		250 (300-1/2)		
LNAV/VNAV DA	1066/60		499 (500-1/4)		
LNAV MDA	1000/24	433 (400-1/2)	1000/40 433 (400-3/4)	1000/50 433 (400-1)	

SC-2, 19 NOV 2009 to 17 DEC 2009

SC-2, 19 NOV 2009 to 17 DEC 2009