

RNAV (GPS) RWY 18R

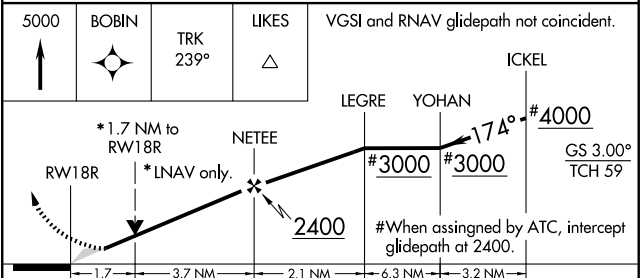
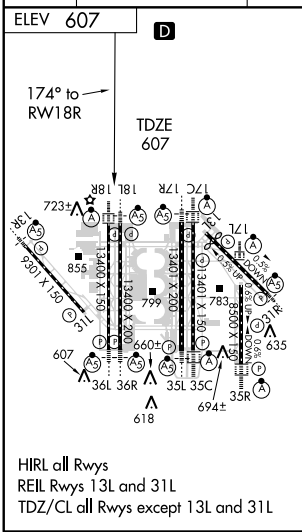
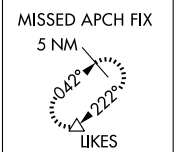
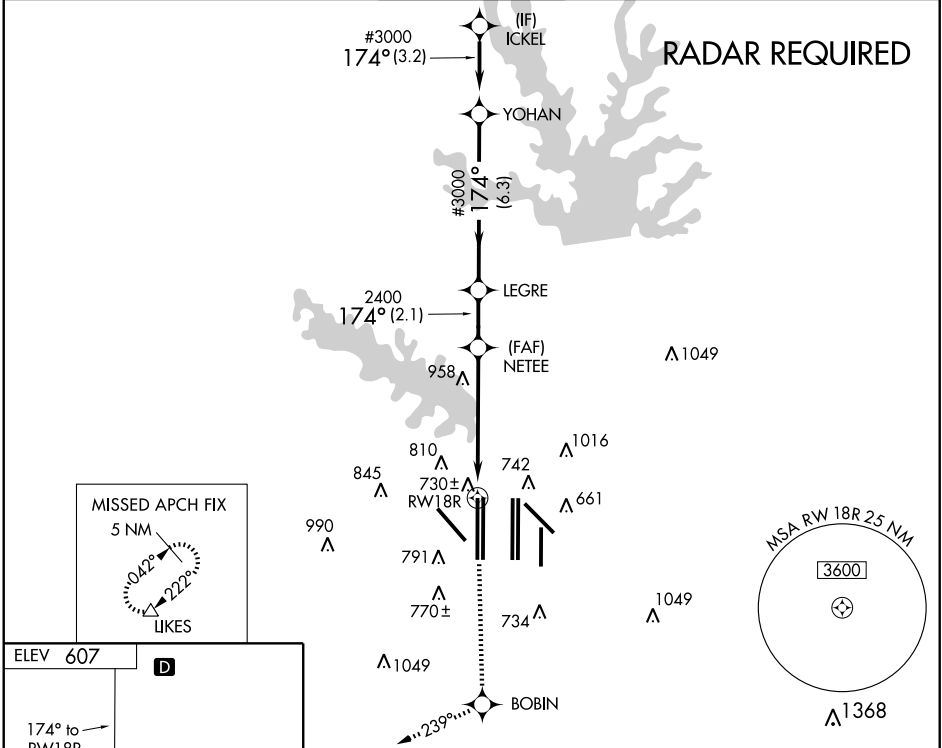
DALLAS-FORT WORTH INTL (DFW)

WAAS CH 99407 W18B	APP CRS 174°	Rwy Idg 13400 TDZE 607 Apt Elev 607
--	------------------------	--

ALSIF-2

MISSED APPROACH: Climb to 5000 direct BOBIN and via 239° track to LIKES and hold.

ARR 123.775	ATIS 135.925	DEP	REGIONAL APP CON 119.4	DFW TOWER 126.55 127.5 EAST 124.15 134.9 WEST	GND CON 121.65 121.8 EAST 121.85 WEST	CLNC DEL 128.25
--------------------	---------------------	-----	-------------------------------	---	---	---------------------------



CATEGORY	A	B	C	D
LPV DA		807/24	200 (200-1/2)	
LNNAV/VNAV DA		980/40	373 (400-3/4)	
LNNAV MDA	1220/24	613 (700-1/2)	1220/60 613 (700-1/4)	1220-1 1/2 613 (700-1 1/2)

SC-2, 19 NOV 2009 to 17 DEC 2009

SC-2, 19 NOV 2009 to 17 DEC 2009