

DALLAS-FORT WORTH, TEXAS

AL-6039 (FAA)

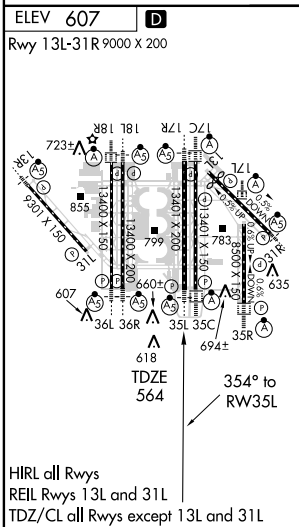
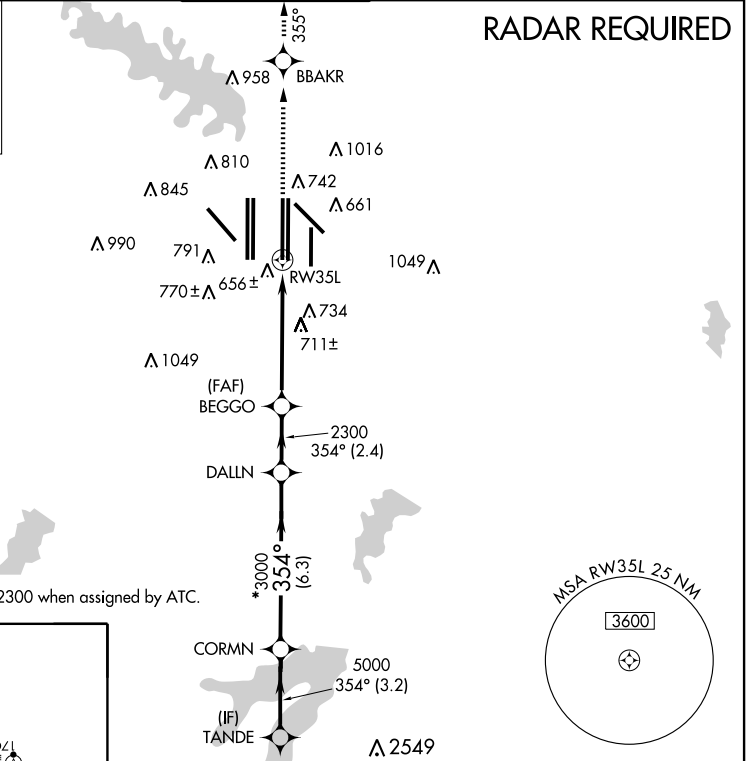
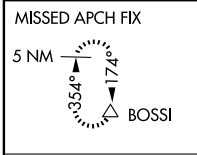
WAAS CH <b>45805</b> <b>W35B</b>	APP CRS <b>354°</b>	Rwy Idg <b>13401</b> TDZE <b>564</b> Apt Elev <b>607</b>
--	------------------------	--

# RNAV (GPS) RWY 35L

DALLAS-FORT WORTH INTL (DFW)

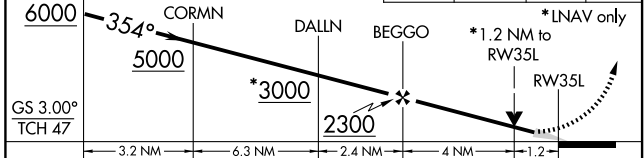
For uncompensated Baro-VNAV systems, LNAV/VNAV NA below -16°C (4°F) or above 47°C (116°F). DME/DME RNP -0.3 NA.	MALSR	MISSED APPROACH: Climb to 4000 direct BBAKR then via 355° track to BOSSI and hold.	

ATIS ARR <b>123.775</b> DEP <b>135.925</b>	REGIONAL APP CON <b>127.075</b>	DFW TOWER <b>126.55 127.5 EAST</b> <b>124.15 134.9 WEST</b>	GND CON <b>121.65 121.8 EAST</b> <b>121.85 WEST</b>	CLNC DEL <b>128.25</b>
---	------------------------------------	---	---	---------------------------



VGSI and RNAV glidepath not coincident. \*2300 when assigned by ATC.

TANDE	4000	BBAKR	355° track	BOSSI
-------	------	-------	------------	-------



CATEGORY	A	B	C	D
LPV DA		814/24	250 (300-½)	
LNAV/VNAV DA		927/40	363 (400-¾)	
LNAV MDA	1020/24	456 (500-½)	1020/40 456 (500-¾)	1020/50 456 (500-1)

DALLAS-FORT WORTH, TEXAS  
Amdt 1 09015

32° 54' N-97° 02' W

# RNAV (GPS) RWY 35L

SC-2, 19 NOV 2009 to 17 DEC 2009

SC-2, 19 NOV 2009 to 17 DEC 2009