

RNAV (GPS) RWY 36L

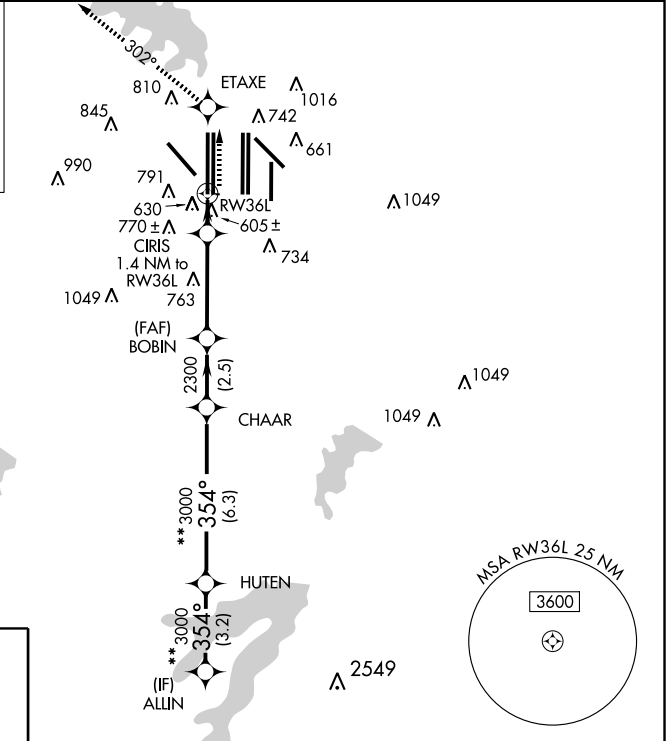
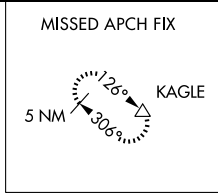
DALLAS-FORT WORTH INTL (DFW)

WAAS CH 93805 W36B	APP CRS 354°	Rwy Idg 13400 TDZE 588 Apt Elev 607
--	------------------------	--

▽ For inoperative MALSR, increase LNAV Cat D visibility to RVR 6000. For uncompensated Baro-VNAV systems, LNAV/VNAV NA below -16°C (4°F) or above 47°C (116°F). DME/DME RNP-0.3 NA.

MALSR
MISSED APPROACH: Climb to 5000 direct ETAXE and via 302° track to KAGLE and hold.

ARR 123.775	ATIS 135.925	DEP 123.775	REGIONAL APP CON 118.425	DFW TOWER 126.55 127.5 EAST 124.15 134.9 WEST	GND CON 121.65 121.8 EAST 121.85 WEST	CLNC DEL 128.25
-----------------------	------------------------	-----------------------	------------------------------------	---	---	---------------------------



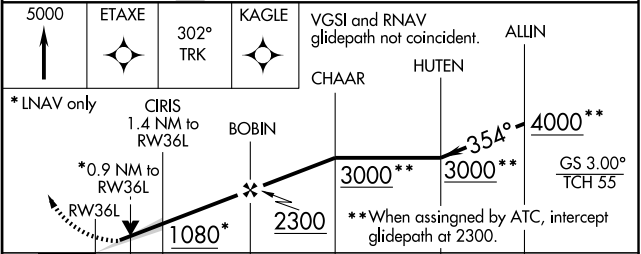
SC-2, 19 NOV 2009 to 17 DEC 2009

SC-2, 19 NOV 2009 to 17 DEC 2009

RADAR REQUIRED

ELEV 607 **D**

HIRL all Rwys
REIL Rws 13L and 31L
TDZ/CL all Rws except 13L and 31L



CATEGORY	A	B	C	D
LPV DA	788/24 200 (200-½)			
LNAV/VNAV DA	987/50 399 (400-1)			
LNAV MDA	940/24	352 (400-½)	940/50 352 (400-1)	