

DALLAS-FORT WORTH, TEXAS

AL-6039 (FAA)

RNAV (GPS) Y RWY 31L

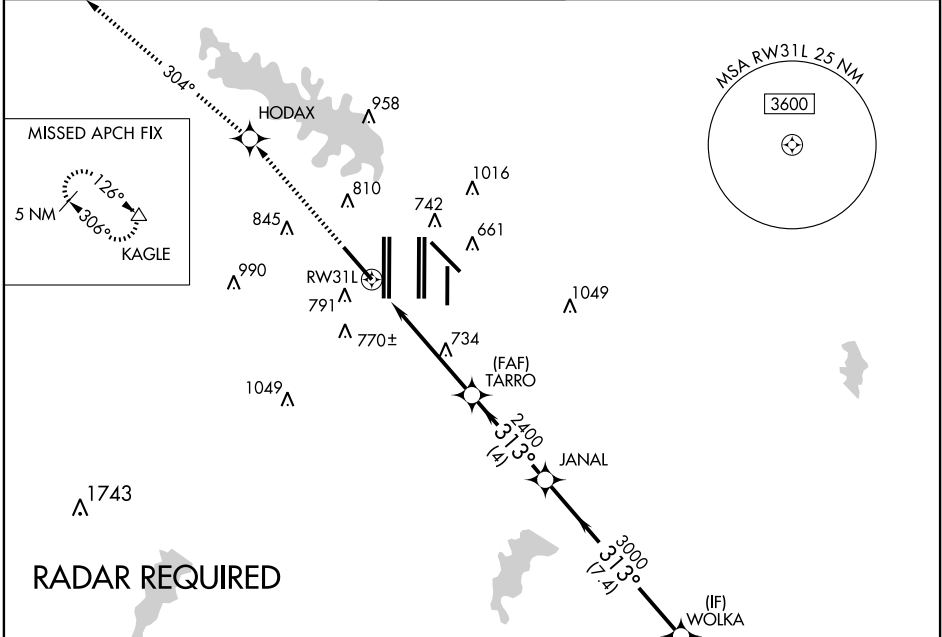
DALLAS-FORT WORTH INTL (DFW)

WAAS CH 99703 W31A	APP CRS 313°	Rwy Idg 9301 TDZE 581 Apt Elev 607
---------------------------------	------------------------	---

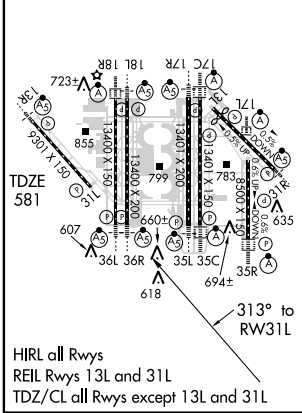
NA	DME/DME RNP-0.3 NA.
-----------	---------------------

MISSED APPROACH: Climb to 5000 direct HODAX and via 304° track to KAGLE and hold.

ARR ATIS 123.775 135.925	DEP 133.15 118.1	REGIONAL APP CON 126.55 127.5 EAST 124.15 134.9 WEST	DFW TOWER 121.65 121.8 EAST 121.85 WEST	GND CON 121.85 WEST	CLNC DEL 128.25
------------------------------------	----------------------------	--	---	-------------------------------	---------------------------

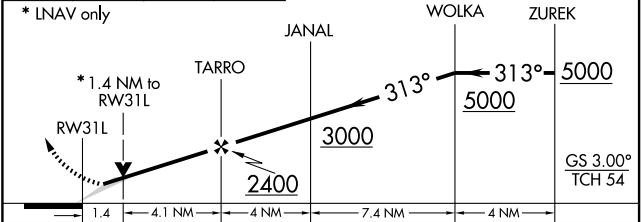


ELEV 607	D
Rwy 13L-31R 9000 X 200	



HIRL all Rwys
REIL Rws 13L and 31L
TDZ/CL all Rws except 13L and 31L

5000 ↑	HODAX ✧	TRK 304°	KAGLE △	VGSI and RNAV glidepath not coincident.
-----------	------------	----------	------------	---



CATEGORY	A	B	C	D
LPV DA	837/40			
LNAV MDA	1060/50	479 (500-1)	1060/60 479 (500-1¼)	1060-1½ 479 (500-1½)

DALLAS-FORT WORTH, TEXAS
Orig 09071

32° 54' N-97° 02' W

RNAV (GPS) Y RWY 31L

SC-2, 19 NOV 2009 to 17 DEC 2009

SC-2, 19 NOV 2009 to 17 DEC 2009