

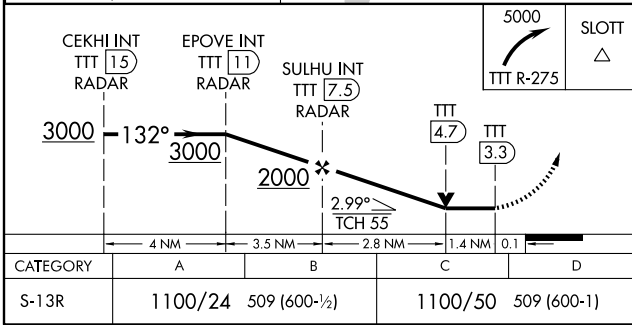
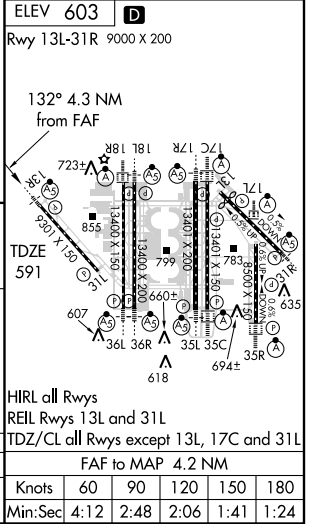
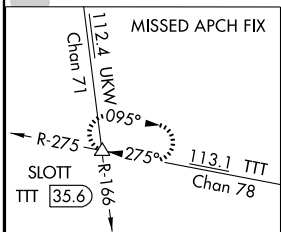
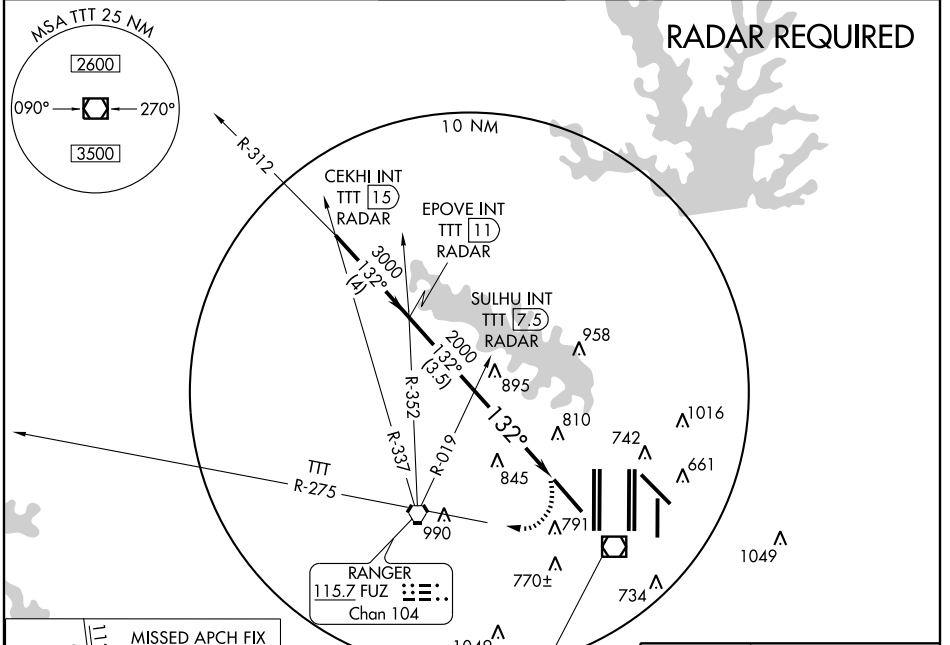
VOR/DME TTT <b>113.1</b> Chan <b>78</b>	APP CRS <b>132°</b>	Rwy Idg <b>9301</b> TDZE <b>591</b> Apt Elev <b>603</b>
---	------------------------	---

# VOR RWY 13R

DALLAS-FORT WORTH INTL (DFW)

MALSR		MISSED APPROACH: Climbing right turn to 5000 via TTT R-275 to SLOTT INT/TTT 35.6 DME.	
-------	--	---	--

ARR ATIS <b>123.775</b>	DEP <b>135.925</b>	REGIONAL APP CON <b>118.1 133.15</b>	DFW TOWER <b>126.55 127.5 EAST</b> <b>124.15 134.9 WEST</b>	GND CON <b>121.65 121.8 EAST</b> <b>121.85 WEST</b>	CLNC DEL <b>128.25</b>
----------------------------	-----------------------	---	---	---	---------------------------



CATEGORY	A	B	C	D
S-13R	1100/24	509 (600-1/2)	1100/50	509 (600-1)

SC-2, 11 MAR 2010 to 08 APR 2010

SC-2, 11 MAR 2010 to 08 APR 2010